

East Brentwood Estates A Conservation Subdivision - 1st Amendment

A part of the Southeast 1/4 of Section 12, T3N, R1W, SLB&M, U.S. Survey,
Being ALL of Lots 21 & 22, EAST BRENTWOOD ESTATES,
Farmington City, Davis County, Utah

PREFIX

08-603

LAST #

0026



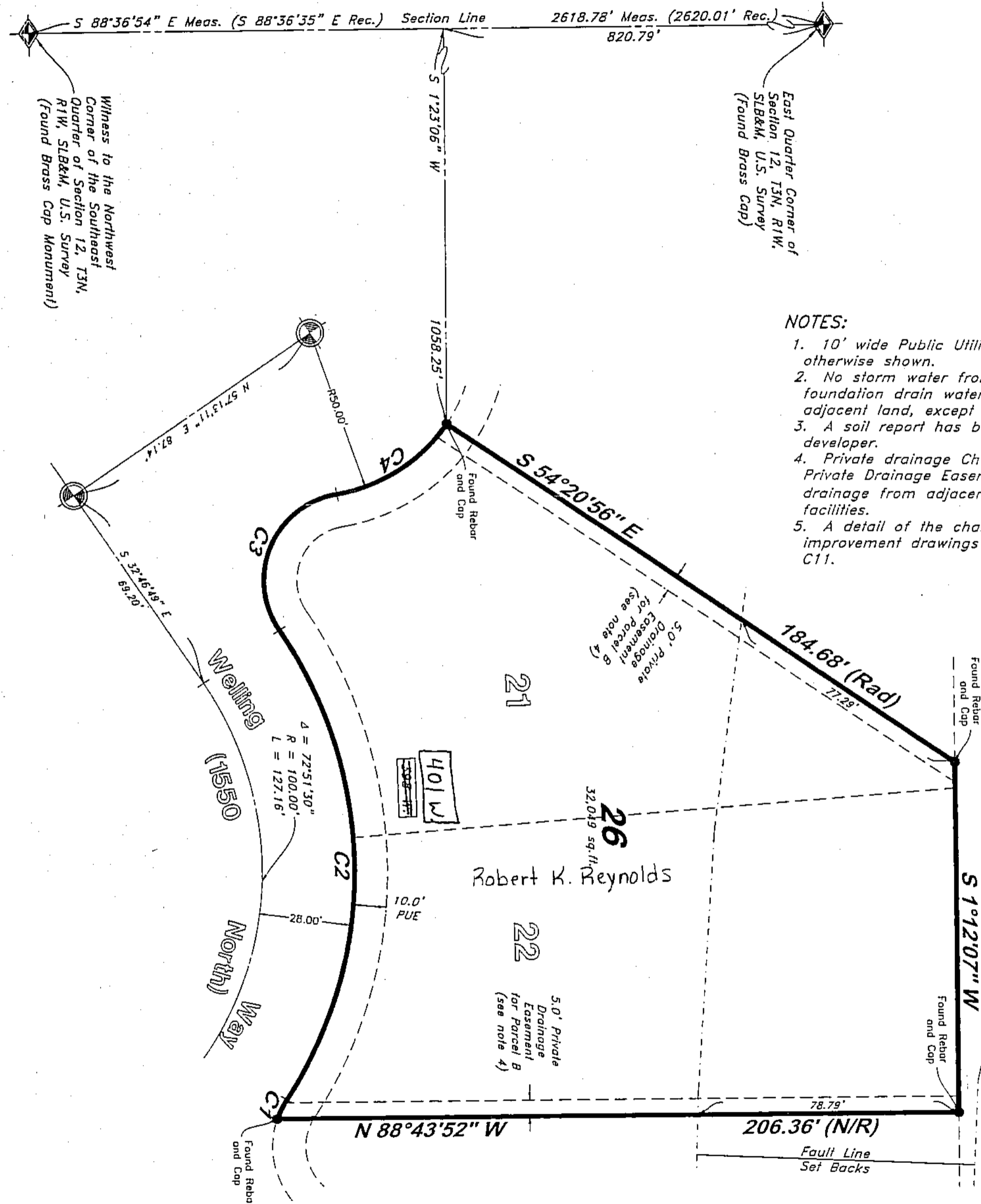
SCALE:

1" = 30'

EAST BRENTWOOD ESTATES
 A CONSERVATION SUBDIVISION-
 1ST AMENDMENT
 DEVELOPMENT:
 CITY: FARMINGTON LOTS: 26

SE 1/4 OF SEC. 12, T3N, R1W
 S.L.M. DAVIS COUNTY, UTAH
 BEING ALL OF LOTS 21 & 22
 EAST BRENTWOOD ESTATES

FILE #5895
R-05-01-18



NOTES:

1. 10' wide Public Utility Easement as indicated by dashed lines, except as otherwise shown.
2. No storm water from impermeable surfaces, irrigation water, or foundation drain water shall be allowed to cross property lines onto adjacent land, except as allowed by note 4.
3. A soil report has been prepared and submitted to the City by the developer.
4. Private drainage Channels will be constructed by the developer within the Private Drainage Easements, and maintained by the lot owner to facilitate drainage from adjacent lots and parcels to streets and/or detention facilities.
5. A detail of the channel to be constructed can be found in the improvement drawings for the East Brentwood Estates Subdivision, see sheet C11.

LEGEND

- ▲ Set Nail & Washer
- ⊙ Set Rebar & Cap
- Hub & Tack
- ◆ Monument to be Set
- ◆ Section Corner
- (Rad) Radial line
- (N/R) Non-Radial line
- D.C.S. Davis County Survey
- - - Easement Line (Labeled for Designation)
- PUE Public Utility Easement
- No Build Area (Fault Line Set Backs or Slopes Greater than 30%)

PROPERTY LINE CURVE DATA

Curve	Delta	Radius	Length	Chord	Chord Bearing
C1	14°21'42"	26.50'	6.64'	6.63'	N 27°37'52" E
C2	67°36'27"	128.00'	151.04'	142.43'	N 1°00'30" E
C3	115°16'23"	26.50'	53.32'	44.77'	N 24°50'28" E
C4	46°49'35"	50.00'	40.86'	39.77'	N 59°03'52" E



GREAT BASIN ENGINEERING

5746 SOUTH 1475 EAST OGDEN, UTAH 84403
 MAIN (801)394-4515 S.L.C (801)521-0222 FAX (801)392-7544
 WWW.GREATBASINENGINEERING.COM

603

08