

08 602

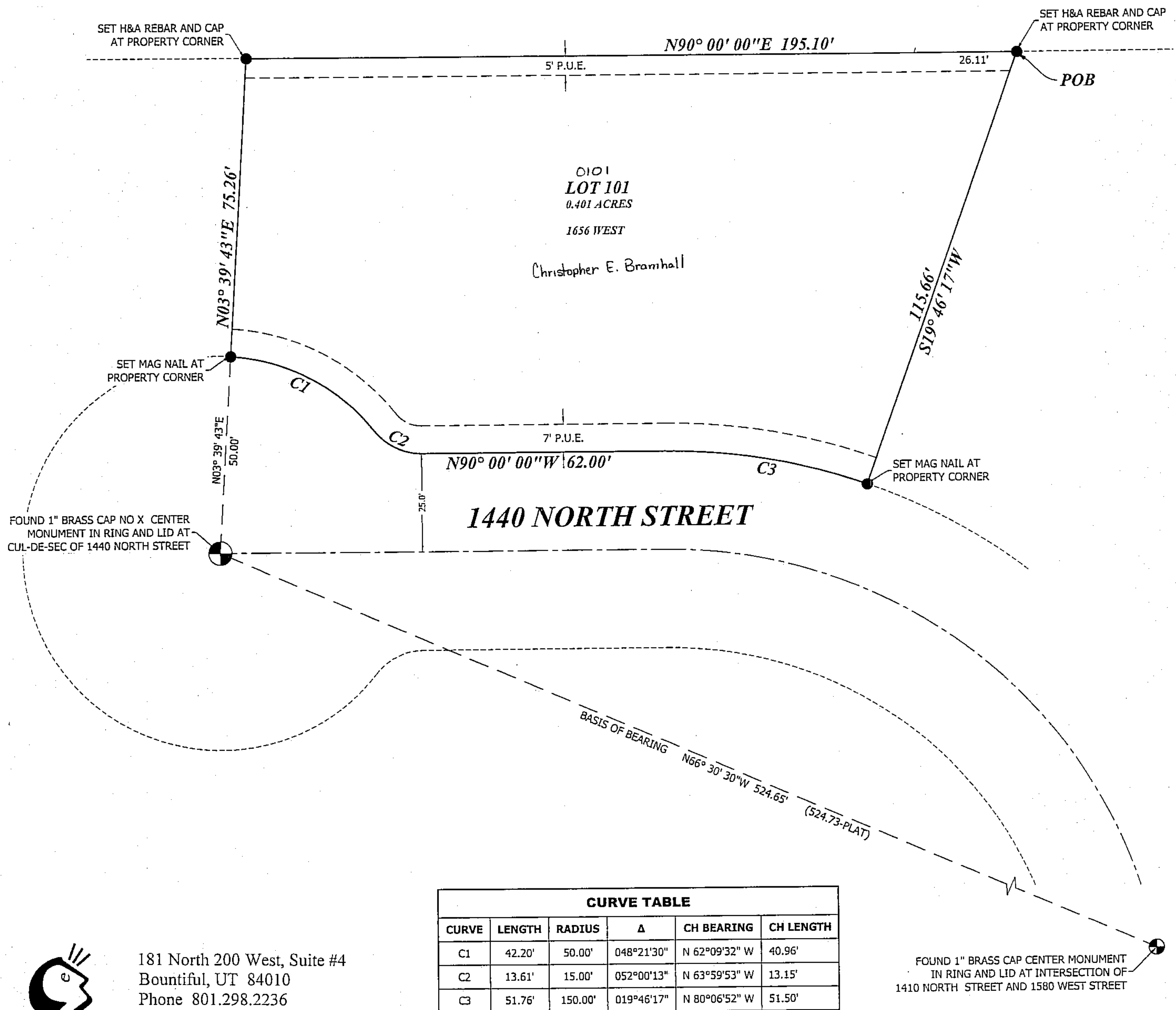
OAKRIDGE FARMS AMENDMENT 2

COMBINING LOT 37 AND 38, OAKRIDGE FARMS SUBDIVISION
 PART OF THE SOUTHWEST QUARTER OF SECTION 11, TOWNSHIP 3 NORTH, RANGE 1 WEST, S.L.B.&M.
 FARMINGTON CITY, DAVIS COUNTY, UTAH


PREFIX
 08-602
 LAST #
 0101

N
 SCALE:
 1" = 20'

DEVELOPMENT: OAKRIDGE FARMS AMENDMENT 2
 CITY: FARMINGTON LOTS: 101



CURVE TABLE					
CURVE	LENGTH	RADIUS	Δ	CH BEARING	CH LENGTH
C1	42.20'	50.00'	048°21'30"	N 62°09'32" W	40.96'
C2	13.61'	15.00'	052°00'13"	N 63°59'53" W	13.15'
C3	51.76'	150.00'	019°46'17"	N 80°06'52" W	51.50'

 Entellus™
 181 North 200 West, Suite #4
 Bountiful, UT 84010
 Phone 801.298.2236
 www.Entellus.com

LEGEND

SUBDIVISION BOUNDARY _____

INTERIOR LOT LINE _____

SECTION LINES _____

TIE TO MONUMENT _____

ROAD CENTERLINE _____

PUBLIC UTILITY EASEMENT (P.U.E.) _____

SW 1/4 OF SEC. 11, T. 3N, R. 1W
 S.L.M. DAVIS COUNTY, UTAH
 COMBINING LOT 37 & 38
 OAKRIDGE FARMS SUBDIVISION

FILE #5893
 R-04-19-18