

KAYSVILLE SUNSET EQUESTRIAN ESTATES PLAT 12 FIRST AMENDED
 AMENDING LOT 1213 LOCATED IN THE N.E. 1/4 OF SECTION 9, TOWNSHIP 3 NORTH,
 RANGE 1 WEST, SALT LAKE BASE AND MERIDIAN, KAYSVILLE CITY, DAVIS COUNTY, UTAH

PREFIX

08-598

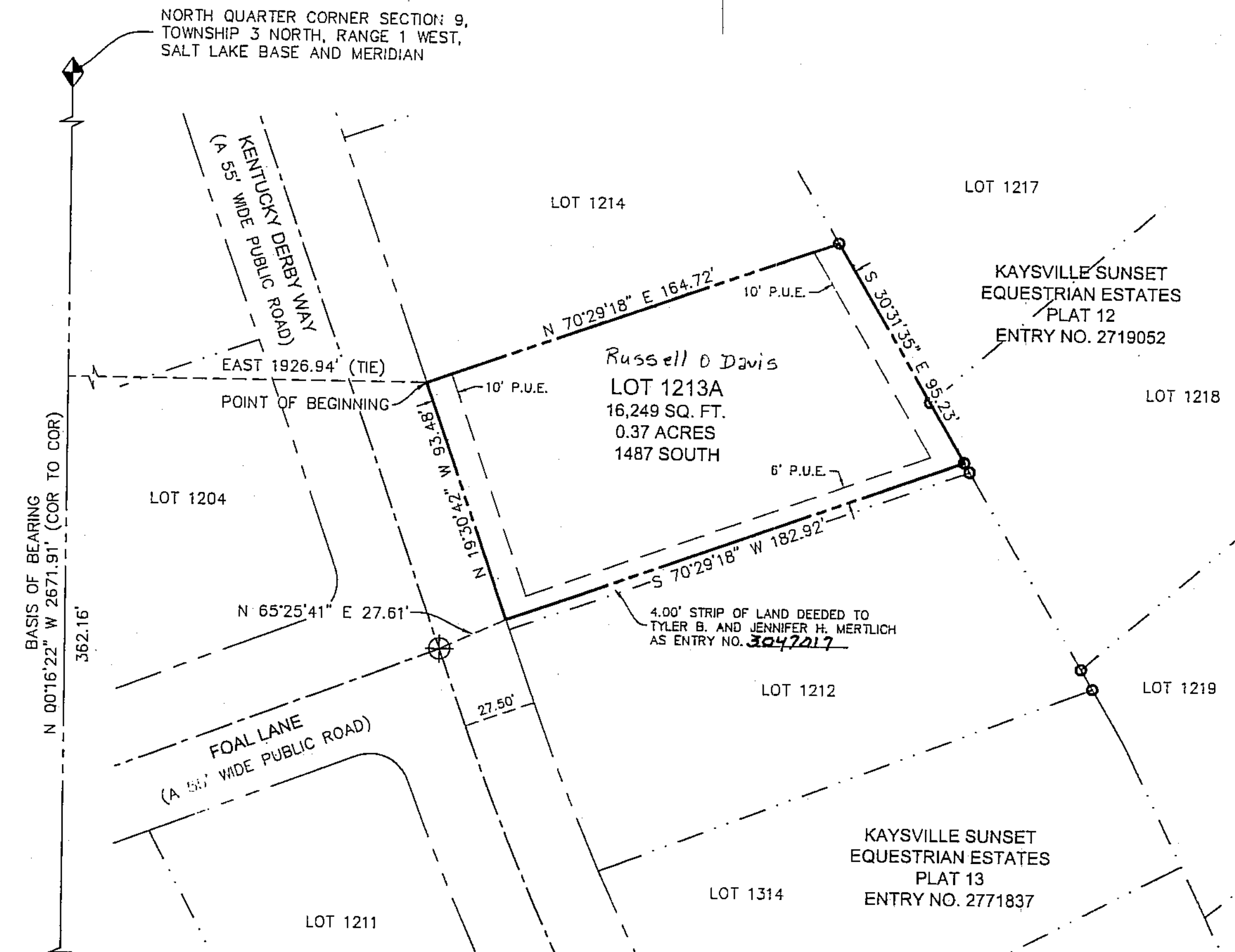
LAST #



SCALE:

1" = 40'

KAYSVILLE SUNSET EQUESTRIAN
 ESTATES PLAT 12 FIRST AMENDED
 DEVELOPMENT.
 CITY: KAYSVILLE LOTS: 1213A



LEGEND:

- DAVIS COUNTY SECTION CORNER MONUMENTS FOUND
- EXISTING STREET MONUMENT
- EXISTING REBAR W/ CAP MARKED "BINGHAM ENG."
- SET REBAR W/ CAP MARKED "BINGHAM ENG."
- SUBDIVISION BOUNDARY LINE
- EXISTING LOT LINE LOT LINE
- PUBLIC UTILITY & DRAINAGE EASEMENT SECTION LINE
- RIGHT-OF-WAY LINE CENTERLINE

NOTES

- 1.) LOT CORNERS WILL BE LOCATED AND MARKED ON THE GROUND WITH A 5/8" REBAR 24" IN LENGTH WITH A PLASTIC CAP LABELED "BINGHAM ENG".
- 2.) APPROVAL OF THIS DEVELOPMENT PLAT BY KAYSVILLE CITY DOES NOT CONSTITUTE ANY REPRESENTATION AS TO THE ADEQUACY OF SUBSURFACE SOIL CONDITION NOR THE LOCATION OR DEPTH OF GROUNDWATER TABLES.

BINGHAM ENGINEERING
 262 N. Wright Brothers Dr. Ste 120, Salt Lake City, UT 84116
 (801) 532-2520 www.binghamnet.com

NE 1/4 OF SEC. 9, T. 3N., R. 1W.
 S.L.M. DAVIS COUNTY, UTAH
 AMENDING LOT 1213
 KAYSVILLE SUNSET
 EQUESTRIAN PLAT 12

FILE #5819

R-09-25-17

08 598