

593

08

**HIDDEN MEADOW SUBDIVISION No. 3 AMENDMENT 2**

COMBINING LOT 308 AND 309, HIDDEN MEADOW SUBDIVISION No. 3  
PART OF THE SOUTHEAST QUARTER OF SECTION 12, TOWNSHIP 3 NORTH, RANGE 1 WEST, S.L.B.&M.  
FARMINGTON CITY, DAVIS COUNTY, UTAH

PREFIX

08-593

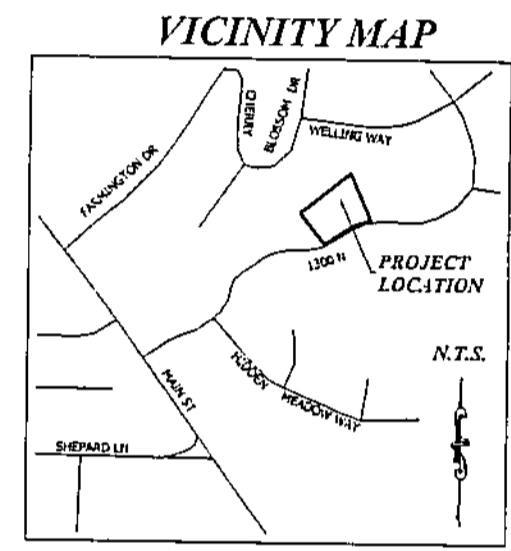
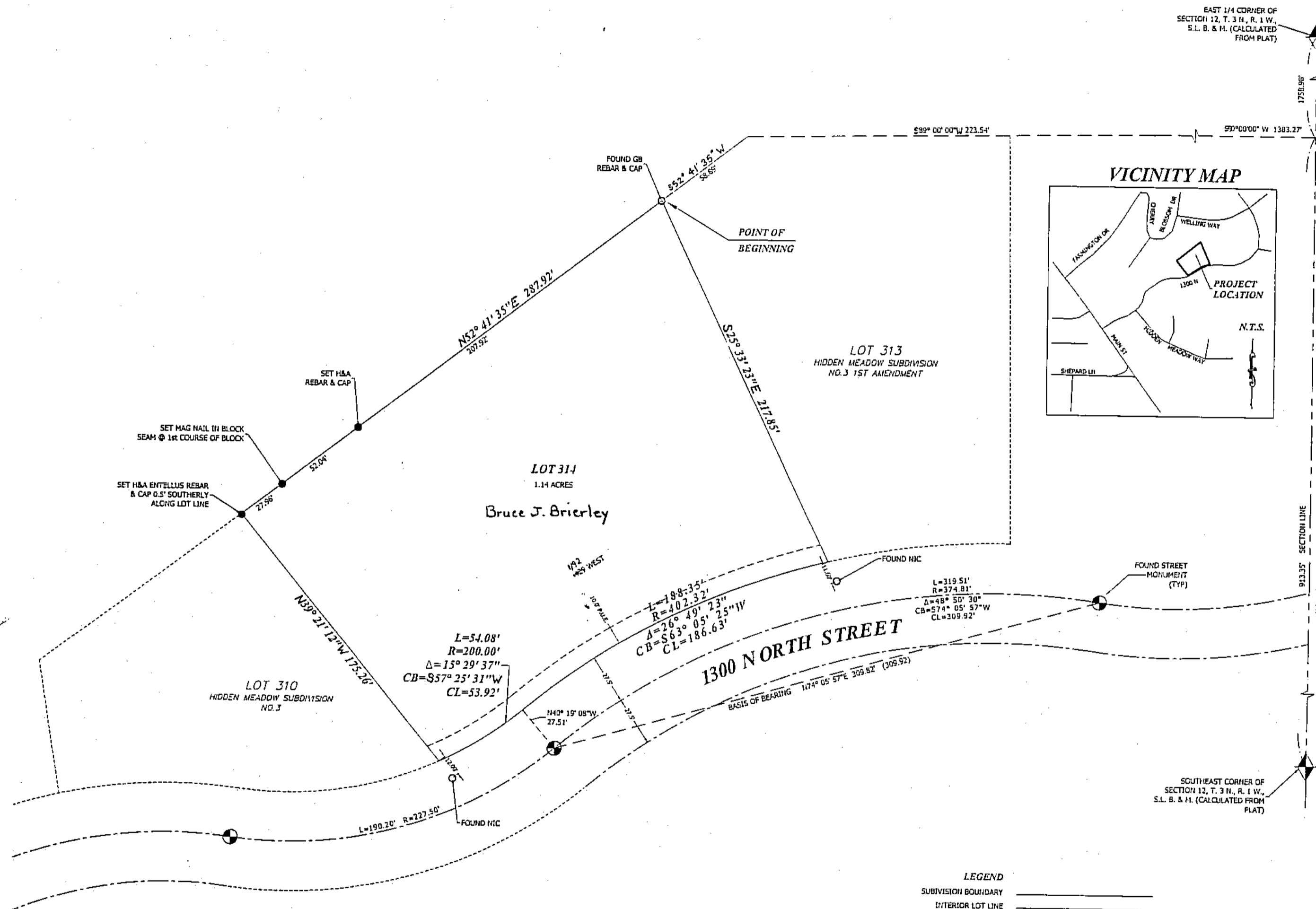
LAST #

0314



SCALE:

1" = 50'



**LEGEND**

SUBDIVISION BOUNDARY	-----
INTERIOR LOT LINE	=====
SECTION LINES	-----
TIE TO MONUMENT	-----
ROAD CENTERLINE	-----
PUBLIC UTILITY EASEMENT (P.U.E.)	-----

**NARRATIVE**

THE PURPOSE OF THIS SURVEY WAS TO CREATE 1 LOT FROM 2 EXISTING LOTS. THE BASIS OF BEARING WAS ESTABLISHED BETWEEN THE TWO MONUMENTS SHOWN ON THIS PLAT.

181 North 200 West, Suite #4  
Bountiful, Utah 84010  
Phone 801-298-2236

**DEVELOPMENT, HIDDEN MEADOW SUBDIVISION  
NO. 3 AMENDMENT 2  
CITY: FARMINGTON LOTS: 314**

SE 1/4 OF SEC. 12, T. 3 N., R. 1 W.  
S.L.M. DAVIS COUNTY, UTAH  
COMBINING LOT 308 & 309  
HIDDEN MEADOW SUBD. NO. 3

FILE #5783  
R-06-16-17