

SUNSET POINTE SUBDIVISION - PHASE 5 AMD

PART OF THE EAST HALF OF SECTION 10,
TOWNSHIP 3 NORTH, RANGE 1 WEST,
SALT LAKE BASE AND MERIDIAN
KAYSVILLE CITY, DAVIS COUNTY, UTAH
AUGUST, 2016
AMENDMENT TO LOT 19 AND 55

PREFIX

08-583

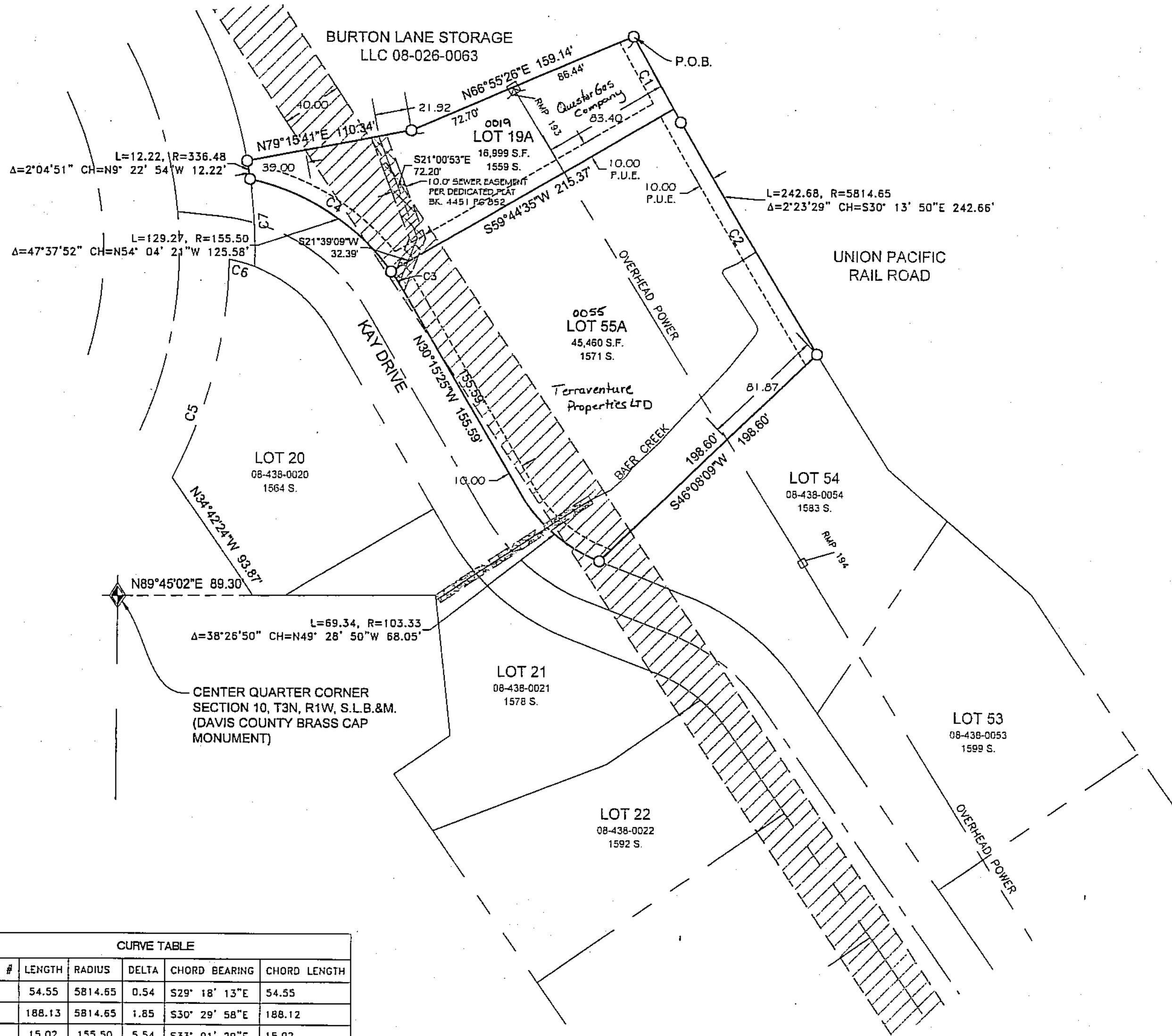
LAST #

0055



SCALE:

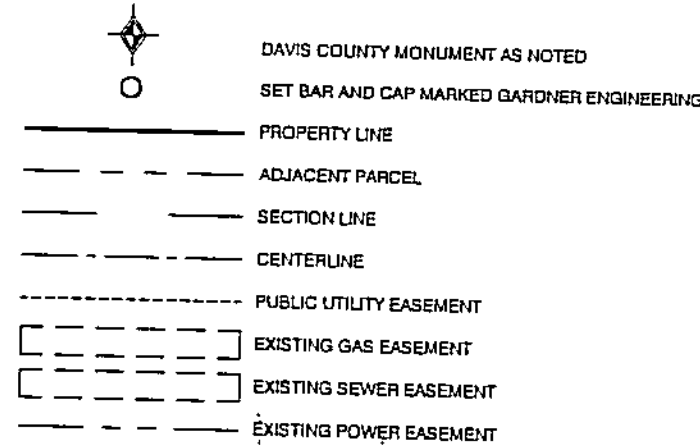
1" = 60'



N89°45'02"E 89.30'
L=69.34, R=103.33
Δ=38°26'50" CH=N49° 28' 50"W 68.05'
CENTER QUARTER CORNER
SECTION 10, T3N, R1W, S.L.B.&M.
(DAVIS COUNTY BRASS CAP
MONUMENT)

CURVE TABLE					
CURVE #	LENGTH	RADIUS	DELTA	CHORD BEARING	CHORD LENGTH
C1	54.55	5814.65	0.54	S29° 18' 13"E	54.55
C2	188.13	5814.65	1.85	S30° 29' 58"E	188.12
C3	15.02	155.50	5.54	S33° 01' 29"E	15.02
C4	114.25	155.50	42.10	S56° 50' 25"E	111.69
C5	150.85	319.48	27.05	N14° 20' 40"E	149.45
C6	17.60	100.50	10.04	N73° 59' 25"W	17.58
C7	58.40	336.48	9.94	N3° 22' 53"W	58.32

- NOTES:
- 10 FOOT PUBLIC UTILITY EASEMENTS AS INDICATED BY DASHED LINES UNLESS OTHERWISE SHOWN.
 - #5 REBAR WITH CAP SET AT BACK LOT CORNERS. COPPER RIVET TO BE SET IN CURB AT LOT LINE EXTENSION.
 - FOR INFO ON QUESTAR GAS CO. EASEMENT SEE UCA 54.13.7.1.b.ii
 - ALL DRIVEWAYS THAT CROSS QUESTAR GAS MAIN LINES SHALL COMPLY WITH QUESTAR SPECIFICATIONS.
 - WHEN BUILDING NEAR POWER LINES, CONTACT ROCKY MTH. POWER FOR CLEARANCE LEVELS.
 - PRIOR TO ISSUANCE OF BUILDING PERMIT AND ARCHITECTURAL APPROVAL, SITE PLAN APPROVAL MUST ALSO BE OBTAINED FROM THE APPROPRIATE UTILITY COMPANY(S).



GARDNER ENGINEERING
CIVIL - LAND PLANNING
MUNICIPAL - LAND SURVEYING
5150 SOUTH 375 EAST OGDEN, UT
OFFICE: 801.476.0202 FAX: 801.476.0066

DEVELOPMENT: SUNSET POINTE SUBDIVISION -
PHASE 5 AMENDED
CITY: KAYSVILLE LOTS: 19A & 55A

B 1/2 SEC. 10, T3N, R1W
S.L.M. DAVIS COUNTY, UTAH
AMENDMENT TO LOT 19 AND 55
(SUNSET POINTE SUBDIVISION PH.5)

FILE #5683
R-08-26-16

08 583