

SHEPARD HEIGHTS SUBDIVISION AMENDMENT #2

AMENDING LOTS 53, 54, & 55
 LOCATED IN THE NORTHEAST QUARTER SECTION 12, T.3N., R.1W., S.L.B.&M.
 FARMINGTON CITY, DAVIS COUNTY, UTAH

PREFIX

08-565

LAST #

0101



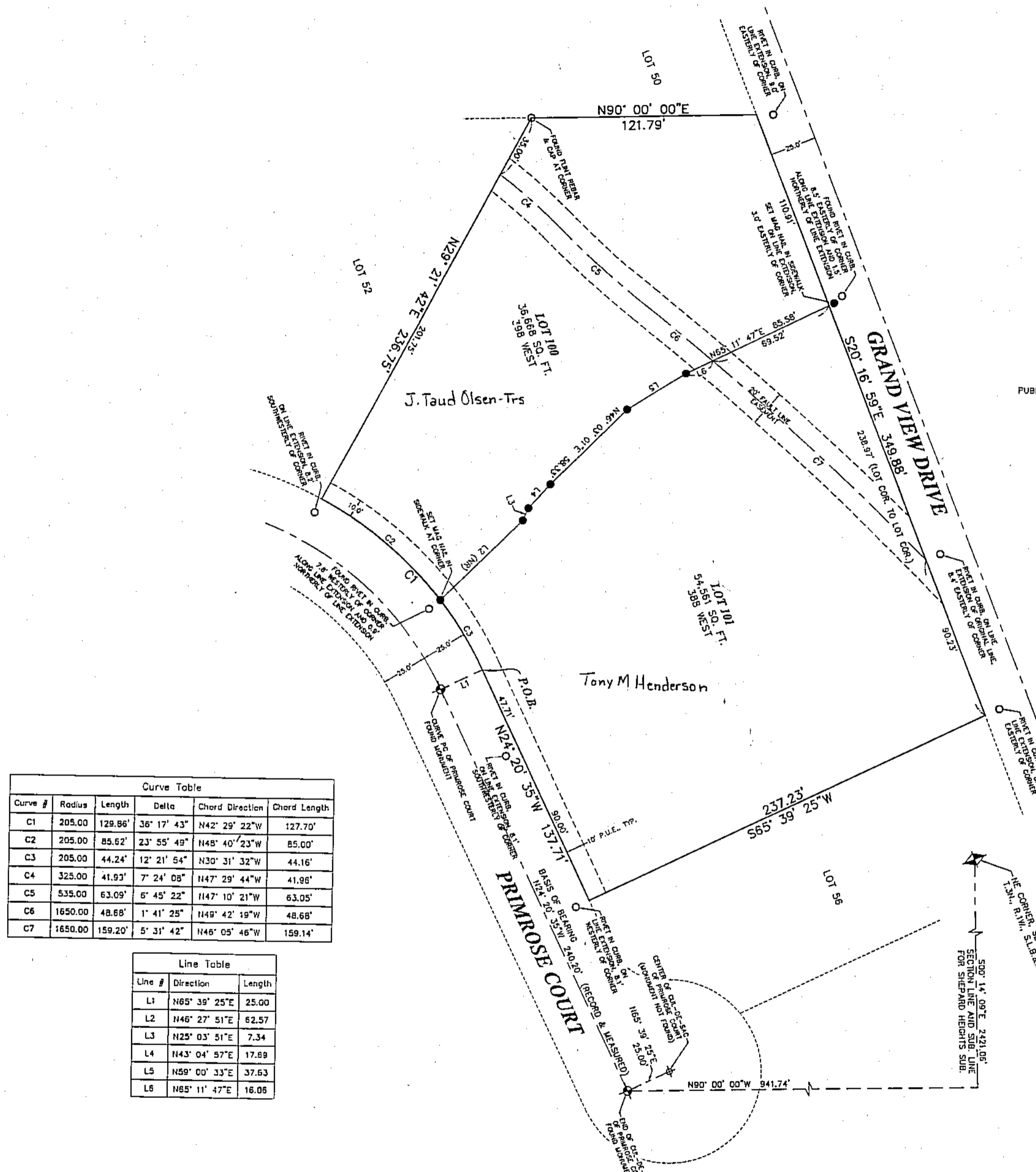
SCALE:

1" = 50'

SHEPARD HEIGHTS
 SUBDIVISION AMENDMENT #2
 DEVELOPMENT.
 CITY: FARMINGTON LOTS: 100 - 101

LEGEND

- SUBDIVISION BOUNDARY
- INTERIOR LOT LINE
- SECTION LINES
- TIE TO MONUMENT
- ROAD CENTERLINE
- PUBLIC UTILITY EASEMENT (P.U.E.)
- FEICIS AT CORNER (UNLESS OTHERWISE NOTED)
- FOUND PROPERTY MARKER (AS NOTED)



Curve Table

Curve #	Radius	Length	Delta	Chord Direction	Chord Length
C1	205.00	129.96'	36° 17' 43"	N42° 29' 22"W	127.70'
C2	205.00	85.62'	23° 55' 49"	N48° 40' 23"W	85.00'
C3	205.00	44.24'	12° 21' 54"	N30° 31' 32"W	44.16'
C4	325.00	41.93'	7° 24' 08"	N47° 29' 44"W	41.98'
C5	535.00	63.09'	6° 45' 22"	N47° 10' 21"W	63.05'
C6	1650.00	48.68'	1° 41' 25"	N49° 42' 19"W	48.68'
C7	1650.00	159.20'	5° 31' 42"	N48° 05' 46"W	159.14'

Line Table

Line #	Direction	Length
L1	N65° 39' 25"E	25.00
L2	N46° 27' 51"E	62.57
L3	N25° 03' 51"E	7.34
L4	N43° 04' 57"E	17.89
L5	N59° 00' 33"E	37.63
L6	N65° 11' 47"E	16.06

NARRATIVE

THE PURPOSE OF THIS SURVEY WAS TO CREATE 2 LOTS FROM 3 EXISTING LOTS. THE BASIS OF BEARING WAS ESTABLISHED BETWEEN THE TWO MONUMENTS SHOWN IN PRIMROSE COURT. TIES TO THE SECTION WERE ESTABLISHED BASED ON THE ORIGINAL SHEPARD HEIGHTS SUBDIVISION PLAT.

ALL LOTS ARE DOUBLE FRONTED ALONG PRIMROSE COURT AND GRAND VIEW DRIVE, AND BOUNDARY MARKERS WERE FOUND IN THE EXISTING CURB LINE, AS SHOWN.

H & A HILL & ARGYLE, Inc.
 Engineering and Surveying
 181 North 200 West, Suite #4, Bountiful, Utah 84010
 (801) 298-2236 Phone, (801) 298-5983 Fax
 13-124 PLAT

NOTES

1. THERE IS NO ACCESS TO GRANDVIEW DRIVE FROM ANY LOT.
2. ALL PUBLIC UTILITY EASEMENTS (P.U.E.) ARE 10.0' WIDE, UNLESS NOTED OTHERWISE.

NE 1/4 SEC. 12, T.3N, R.1W
 S.L.M. DAVIS COUNTY, UTAH
 LOTS 53, 54, & 55
 (SHEPARD HEIGHTS SUBD.)

FILE #5581
 R-10-29-15

08 565