

# HIDDEN MEADOW SUBDIVISION AMENDMENT 2

COMBINING LOT 1, HIDDEN MEADOW SUBDIVISION AND LOT 3 DWIGHT POULSON SUBDIVISION  
 PART OF THE SOUTHEAST QUARTER OF SECTION 12, AND THE NORTHEAST  
 QUARTER OF SECTION 13, TOWNSHIP 3 NORTH, RANGE 1 WEST, S.L.B.&M.  
 FARMINGTON CITY, DAVIS COUNTY, UTAH

PREFIX

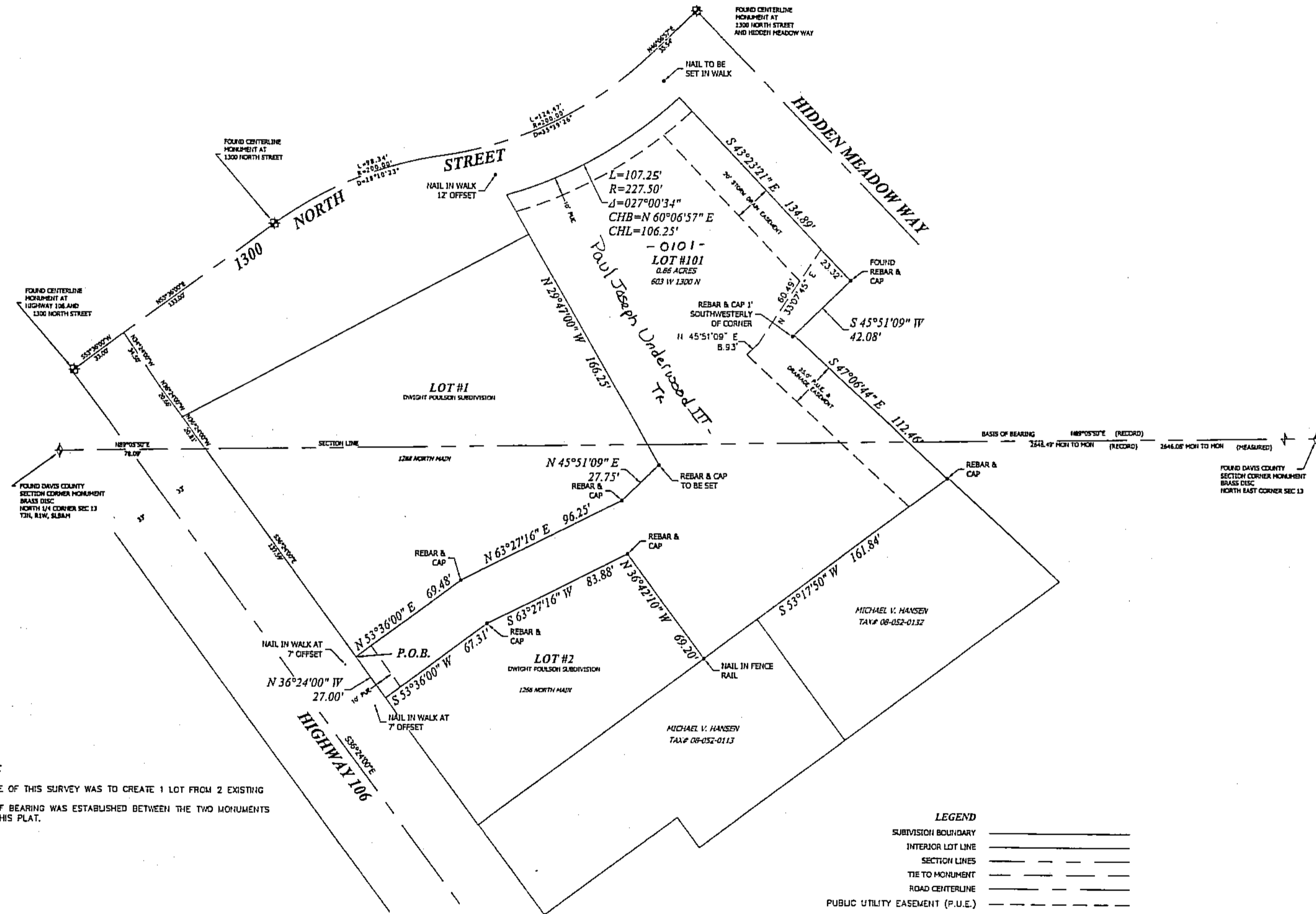
08-563

LAST #  
0101



SCALE:  
1" = 50'

DEVELOPMENT: HIDDEN MEADOW SUBDIVISION AMENDMENT 2  
 CITY: FARMINGTON LOTS: 101



**NARRATIVE**

THE PURPOSE OF THIS SURVEY WAS TO CREATE 1 LOT FROM 2 EXISTING LOTS. THE BASIS OF BEARING WAS ESTABLISHED BETWEEN THE TWO MONUMENTS SHOWN ON THIS PLAT.

**LEGEND**

SUBDIVISION BOUNDARY	—————
INTERIOR LOT LINE	—————
SECTION LINES	—————
TIE TO MONUMENT	—————
ROAD CENTERLINE	—————
PUBLIC UTILITY EASEMENT (P.U.E.)	—————

181 North 200 West, Suite #4  
 Bountiful, Utah 84010  
 Phone 801-298-2236  
 Fax 801-298-5983

1088001 PLAT 8/23/15 7/15/15

SE 1/4 SEC. 12, T.3N, R.1W  
 NE 1/4 SEC. 13, T.3N, R.1W  
 S.L.M. DAVIS COUNTY, UTAH  
 COMBINING LOT 1, HIDDEN MEADOW SUBD.  
 & LOT 3, DWIGHT POULSON SUBD.

FILE #5568  
 R-08-25-15

563

08