

SUNSET POINTE SUBDIVISION - PHASE 12

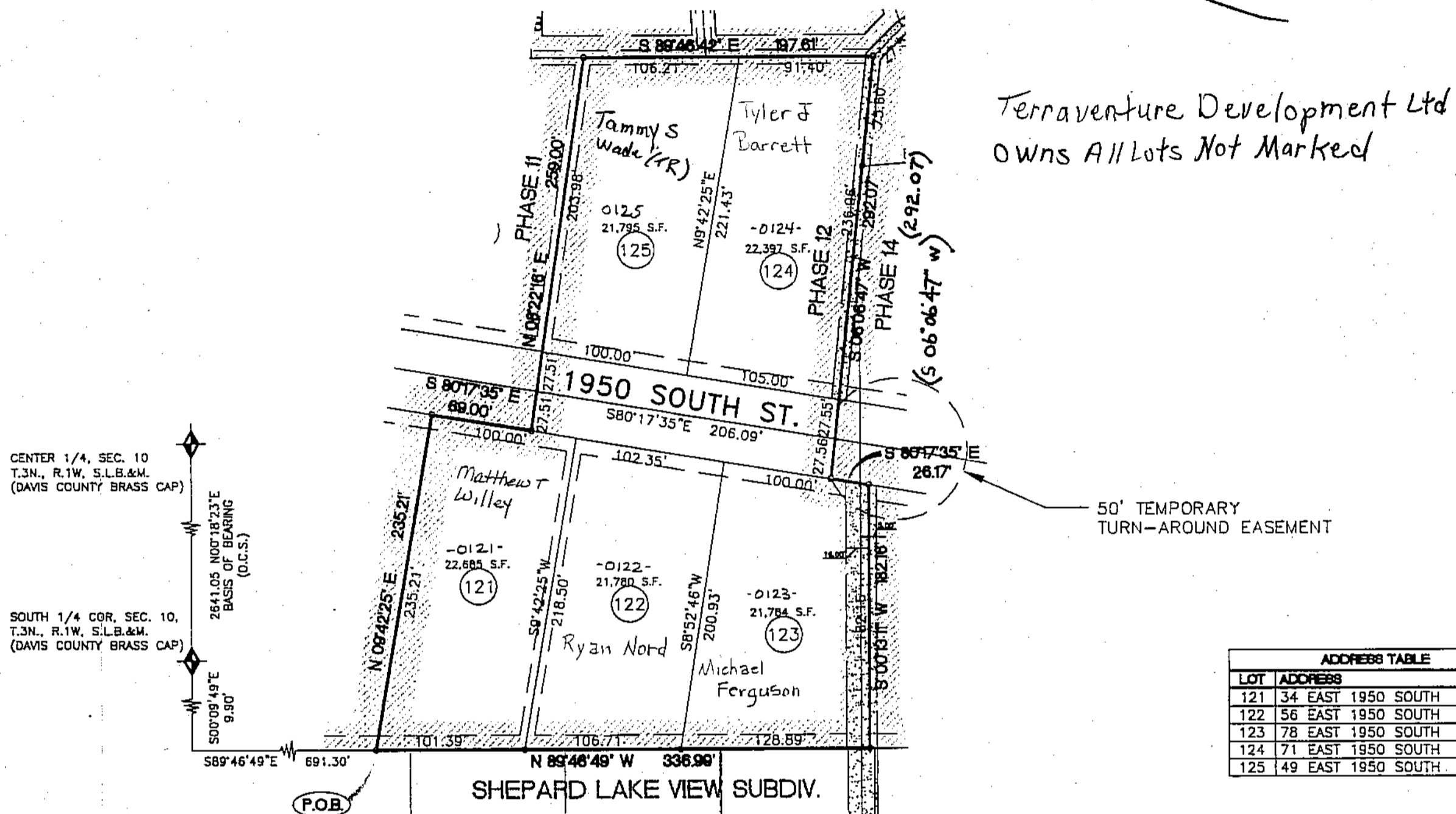
PART OF THE SOUTHEAST QUARTER OF SECTION 10,
AND PART OF THE NORTHEAST QUARTER OF SECTION 15,

T3N, R1W, SLB&M, U.S. SURVEY

KAYSVILLE CITY, DAVIS COUNTY, UTAH

SEPTEMBER 2013

PART OF LOTS 2, 3, & 4 - BLOCK 36 FARMINGTON BC



Terraventure Development Ltd
Owns All Lots Not Marked

ADDRESS TABLE	
LOT	ADDRESS
121	34 EAST 1950 SOUTH
122	56 EAST 1950 SOUTH
123	78 EAST 1950 SOUTH
124	71 EAST 1950 SOUTH
125	49 EAST 1950 SOUTH

NOTES:

- 8 FOOT PUBLIC UTILITY EASEMENTS AS INDICATED BY DASHED LINES UNLESS OTHERWISE SHOWN.
- #5 REBAR WITH CAP SET AT BACK LOT CORNERS. COPPER RIVET TO BE SET IN CURB AT LOT LINE EXTENSION.
- MAXIMUM BASEMENT DEPTH SHALL NOT EXCEED 10.0 FEET UNLESS APPROVED BY A QUALIFIED GEOTECHNICAL ENGINEER.

LEGEND

- SET 5/8" X 24" REBAR AND CAP MARKED "GARDNER ENGINEERING"
- STREET MONUMENTS TO BE SET
- ◆ DAVIS COUNTY MONUMENT (AS NOTED)
- - - 10' PUBLIC UTILITY EASEMENT (P.U.E.) AS SHOWN.
- ▨ 10' PUBLIC UTILITY & DRAINAGE EASEMENT

Prepared By:



5875 S. ADAMS AVE. PARKWAY
OGDEN, UT 84405

(801)476-0202

PREFIX

08-529

LAST #

0125



SCALE:

1" = 80'

DEVELOPMENT: SUNSET POINTE SUBDIVISION - PHASE 12
KAYSVILLE LOTS: 121 THRU 125

SE 1/4 SEC. 10, T3N R1W &
NE 1/4 SEC. 15, T3N R1W
S.L.M. DAVIS COUNTY, UTAH
PART OF LOTS 2, 3 & 4 BLOCK 36
FARMINGTON B.C.

FILE #5342

R-10-23-13

529

08