

SUNSET POINTE SUBDIVISION - PHASE 11

PART OF THE SOUTHEAST QUARTER OF SECTION 10,
AND PART OF THE NORTHEAST QUARTER OF SECTION 15,
T3N, R1W, SLB&M, U.S. SURVEY
KAYSVILLE CITY, DAVIS COUNTY, UTAH

SEPTEMBER 2013

PART OF LOTS 2, 3 & 4 - BLOCK 36 FARMINGTON BC

Terraventure Development LTD
Owns All Lots Not Marked

PREFIX

08-528

LAST #

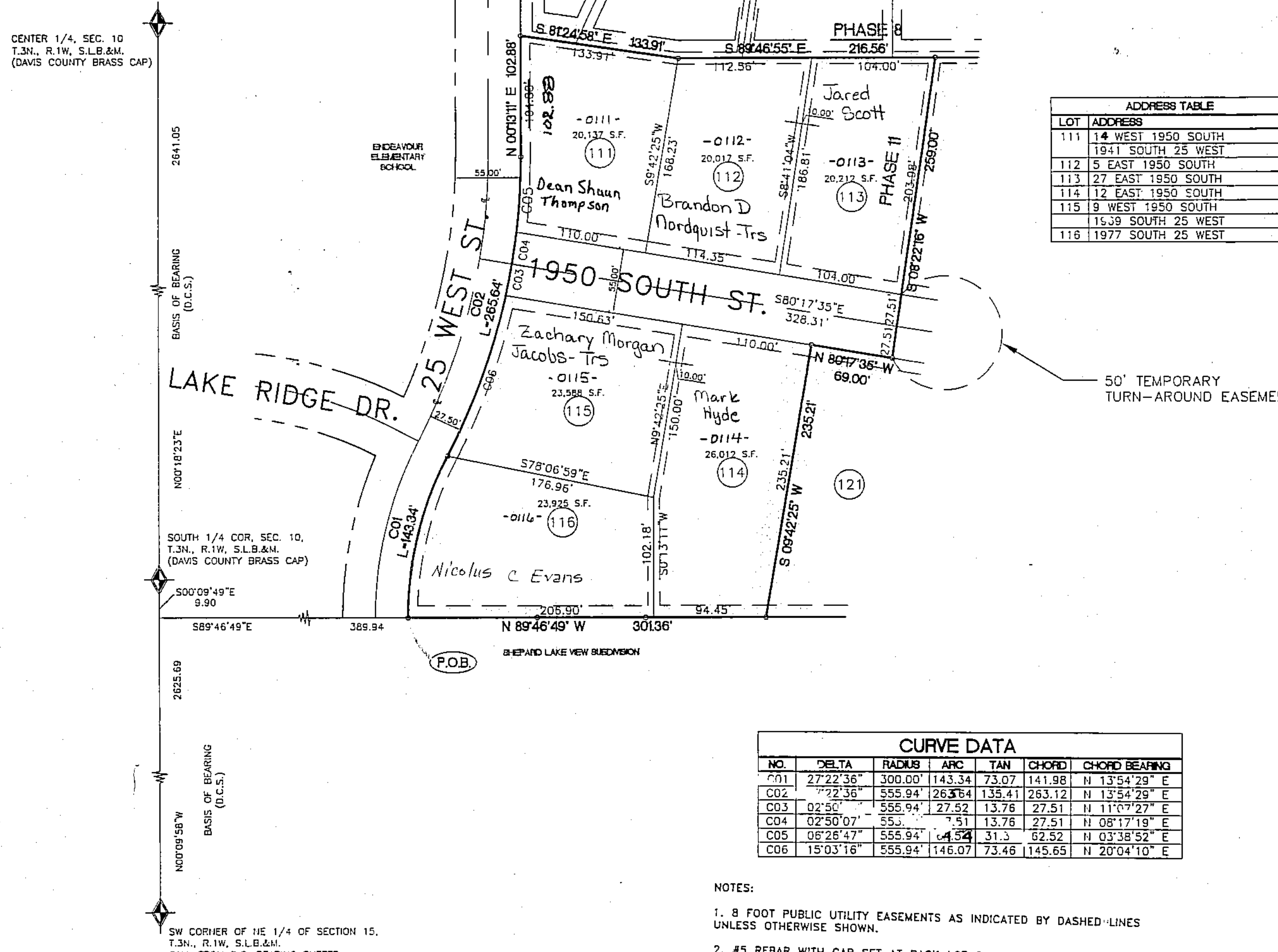
0116



SCALE:

1" = 80'

CENTER 1/4, SEC. 10
T.3N., R.1W, S.L.B.&M.
(DAVIS COUNTY BRASS CAP)



ADDRESS TABLE	
LOT	ADDRESS
111	14 WEST 1950 SOUTH 1941 SOUTH 25 WEST
112	5 EAST 1950 SOUTH
113	27 EAST 1950 SOUTH
114	12 EAST 1950 SOUTH
115	9 WEST 1950 SOUTH 1539 SOUTH 25 WEST
116	1977 SOUTH 25 WEST

CURVE DATA						
NO.	DELTA	RADIUS	ARC	TAN	CHORD	CHORD BEARING
C01	27°22'36"	300.00'	143.34	73.07	141.98	N 13°54'29" E
C02	27°22'36"	555.94'	263.64	135.41	263.12	N 13°54'29" E
C03	02°50'	555.94'	27.52	13.76	27.51	N 11°07'27" E
C04	02°50'07"	555.94'	27.52	13.76	27.51	N 08°17'19" E
C05	06°26'47"	555.94'	4.54	31.3	62.52	N 03°38'52" E
C06	15°03'16"	555.94'	146.07	73.46	145.65	N 20°04'10" E

NOTES:

- 8 FOOT PUBLIC UTILITY EASEMENTS AS INDICATED BY DASHED LINES UNLESS OTHERWISE SHOWN.
- #5 REBAR WITH CAP SET AT BACK LOT CORNERS. COPPER RIVET TO BE SET IN CURB AT LOT LINE EXTENSION.
- MAXIMUM BASEMENT DEPTH SHALL NOT EXCEED 10.0 FEET UNLESS APPROVED BY A QUALIFIED GEOTECHNICAL ENGINEER.

LEGEND

- SET 5/8" X 24" REBAR AND CAP MARKED "GARDNER ENGINEERING"
- STREET MONUMENTS TO BE SET
- ◆ DAVIS COUNTY MONUMENT (AS NOTED)
- 10' PUBLIC UTILITY EASEMENT (P.U.E.) AS SHOWN.

Prepared By:



5150 South 375 East, Ogden, UT 84403
Phone (801) 478-0252 Fax (801) 478-0066

DEVELOPMENT: SUNSET POINTE SUBDIVISION - PHASE 11
 KAYSVILLE LOTS: 111 THRU 116

SE 1/4 SEC. 10, T 3N R 1W &
 NE 1/4 SEC. 15, T 3N R 1W
 S.L.M. DAVIS COUNTY, UTAH
 PART OF LOTS 2, 3 & 4 BLOCK 36
 FARMINGTON B.C.

FILE #5341

R-10-23-13

08528