

Stephen Johnson Subdivision

Being a Part of the Southwest Quarter of Section 4, T.3N., R.1W., S.L.B. & M.
Kaysville City, Davis County, Utah

PREFIX

08-513

LAST #

0003



SCALE:

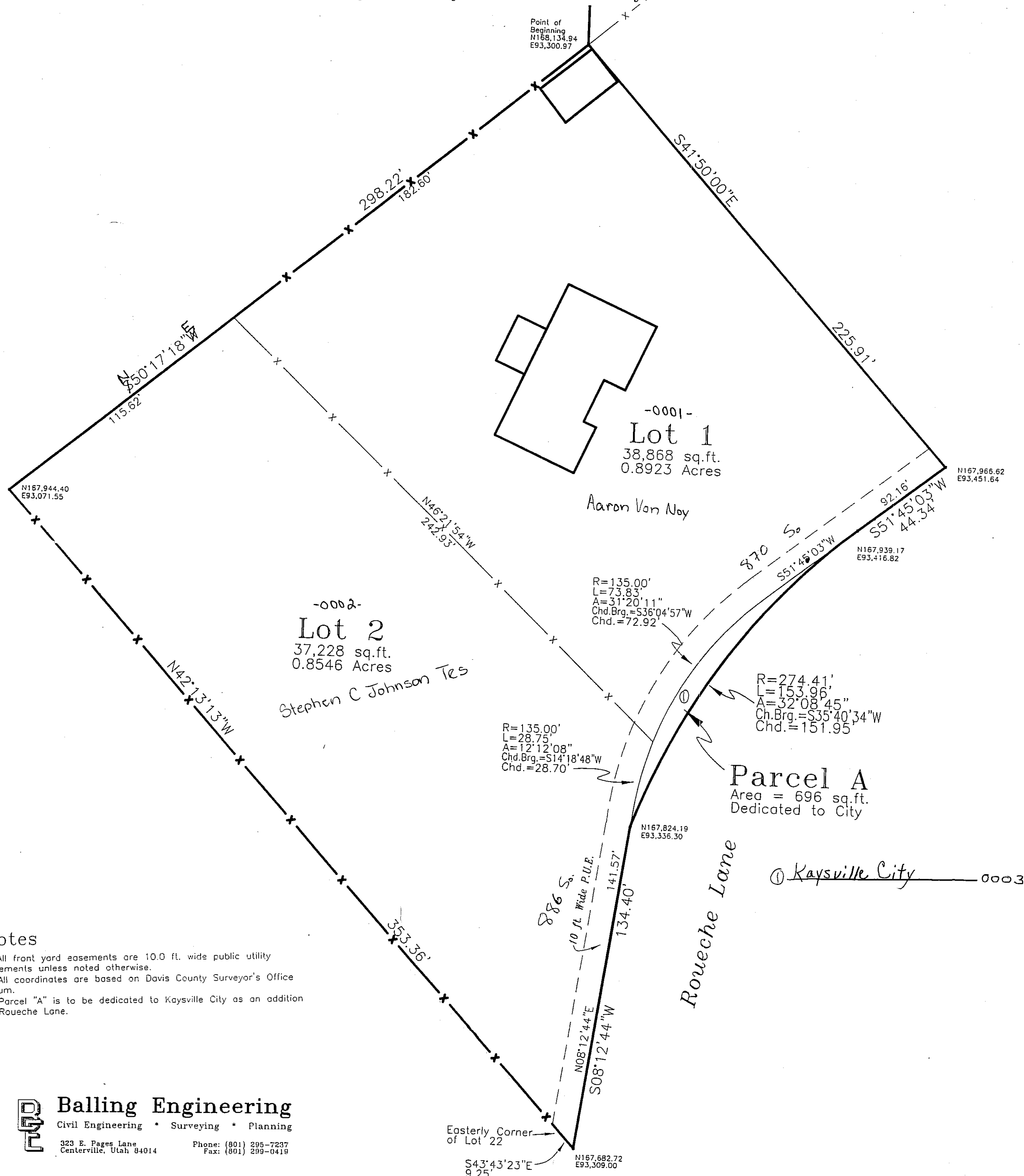
1" = 30'

DEVELOPMENT: STEPHEN JOHNSON SUBDIVISION
CITY: KAYSVILLE LOTS: 1 THRU 2 & PARCELA

SW 1/4 OF SEC. 4, T3N, R1W
S.L.M. DAVIS COUNTY, UTAH

FILE #5222
R-12-26-12

08 513



Notes

1. All front yard easements are 10.0 ft. wide public utility easements unless noted otherwise.
2. All coordinates are based on Davis County Surveyor's Office datum.
3. Parcel "A" is to be dedicated to Kaysville City as an addition to Roueche Lane.

Balling Engineering
Civil Engineering * Surveying * Planning
323 E. Pages Lane
Centerville, Utah 84014
Phone: (801) 295-7237
Fax: (801) 299-0419