

Mountain Vistas Phase 5 Subdivision

AMENDING LOT 1 OF PHASE 3A & LOTS 301 & 304 OF PHASE 3, MOUNTAIN VISTAS
 PART OF THE NORTHWEST QUARTER OF SECTION 4, T.3N., R.1W., AND THE SOUTHWEST QUARTER OF SECTION 33, T.4N., R.1W.
 KAYSVILLE CITY, DAVIS COUNTY, UTAH

PREFIX¹⁴

08-512

LAST #

0004

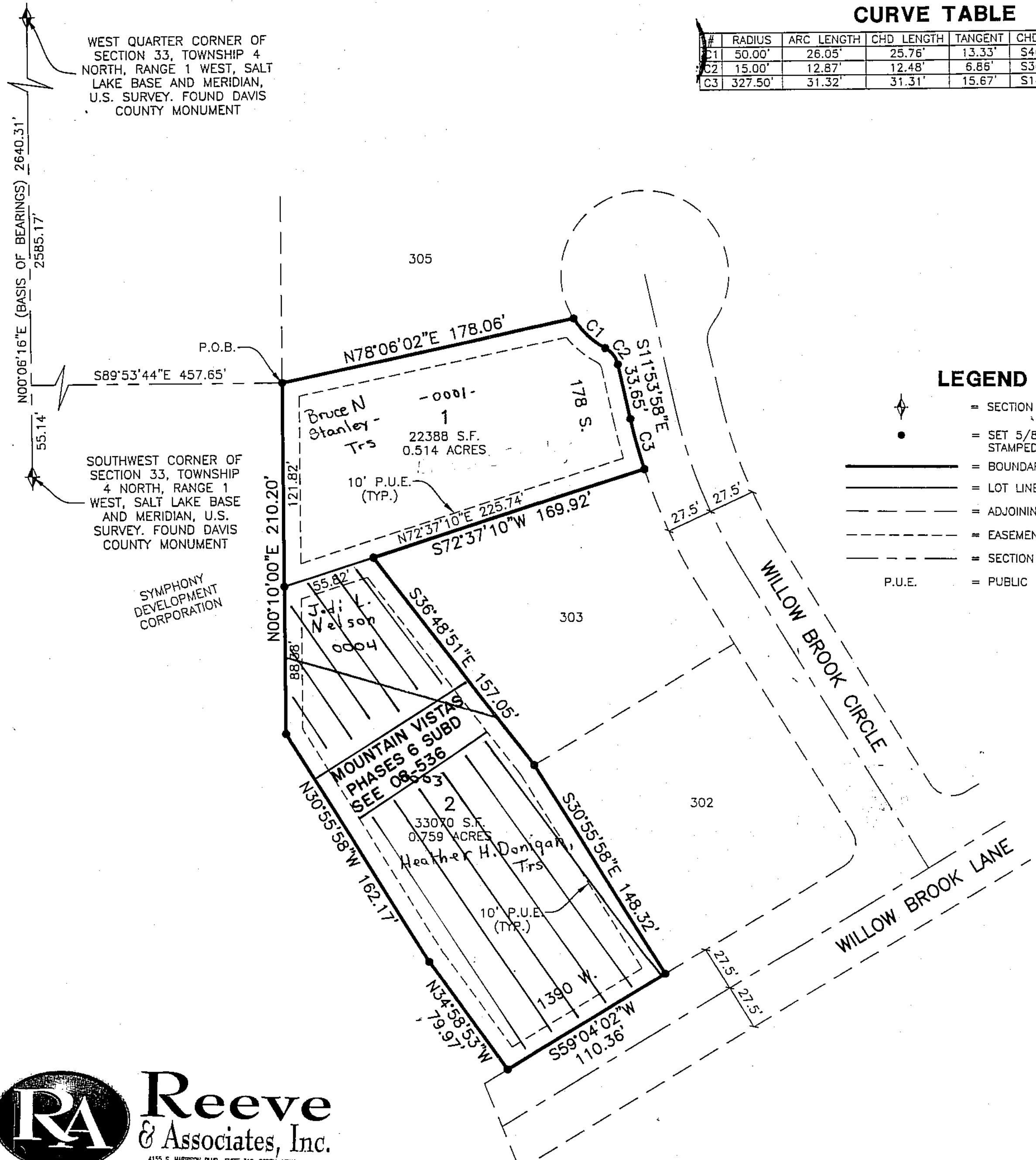


SCALE:

1" = 50'

CURVE TABLE

#	RADIUS	ARC LENGTH	CHD LENGTH	TANGENT	CHD BEARING	DELTA
C1	50.00'	26.05'	25.76'	13.33'	S46°08'20"E	29°51'24"
C2	15.00'	12.87'	12.48'	6.86'	S36°29'00"E	49°10'04"
C3	327.50'	31.32'	31.31'	15.67'	S14°38'20"E	5°28'45"



LEGEND

- = SECTION CORNER
- = SET 5/8" REBAR AND PLASTIC CAP STAMPED "REEVE & ASSOCIATES"
- = BOUNDARY LINE
- = LOT LINE
- = ADJOINING PROPERTY
- = EASEMENTS
- = SECTION TIE LINE
- = PUBLIC UTILITY EASEMENT

DEVELOPMENT: MOUNTAIN VISTAS PHASE 5 SUBDIVISION

CITY: KAYSVILLE LOTS: 1 THRU 2

NW 1/4 OF SEC. 4, T3N, R1W &
 SW 1/4 OF SEC 33, T4N, R1W
 S.L.M. DAVIS COUNTY, UTAH
 ALL OF LOT 1, PH. 3A & LOTS 301 & 304,
 PH. 3, MOUNTAIN VISTAS SUBD.

FILE #5209
 R-11-08-12



Reeve & Associates, Inc.

4155 S. HARRISON BLVD., SUITE 310, OGDEN, UTAH 84403
 TEL: (801) 821-3100 FAX: (801) 821-2656 www.reeve-associates.com

512

08