

Spring Creek Estates No. 7

A part of the Southwest 1/4 of Section 14,
T3N, R1W, SLB&M, U.S. Survey
Farmington City, Davis County, Utah

PREFIX

08-509

LAST #
PAGE 1 of 2



SCALE:
1" = 40'

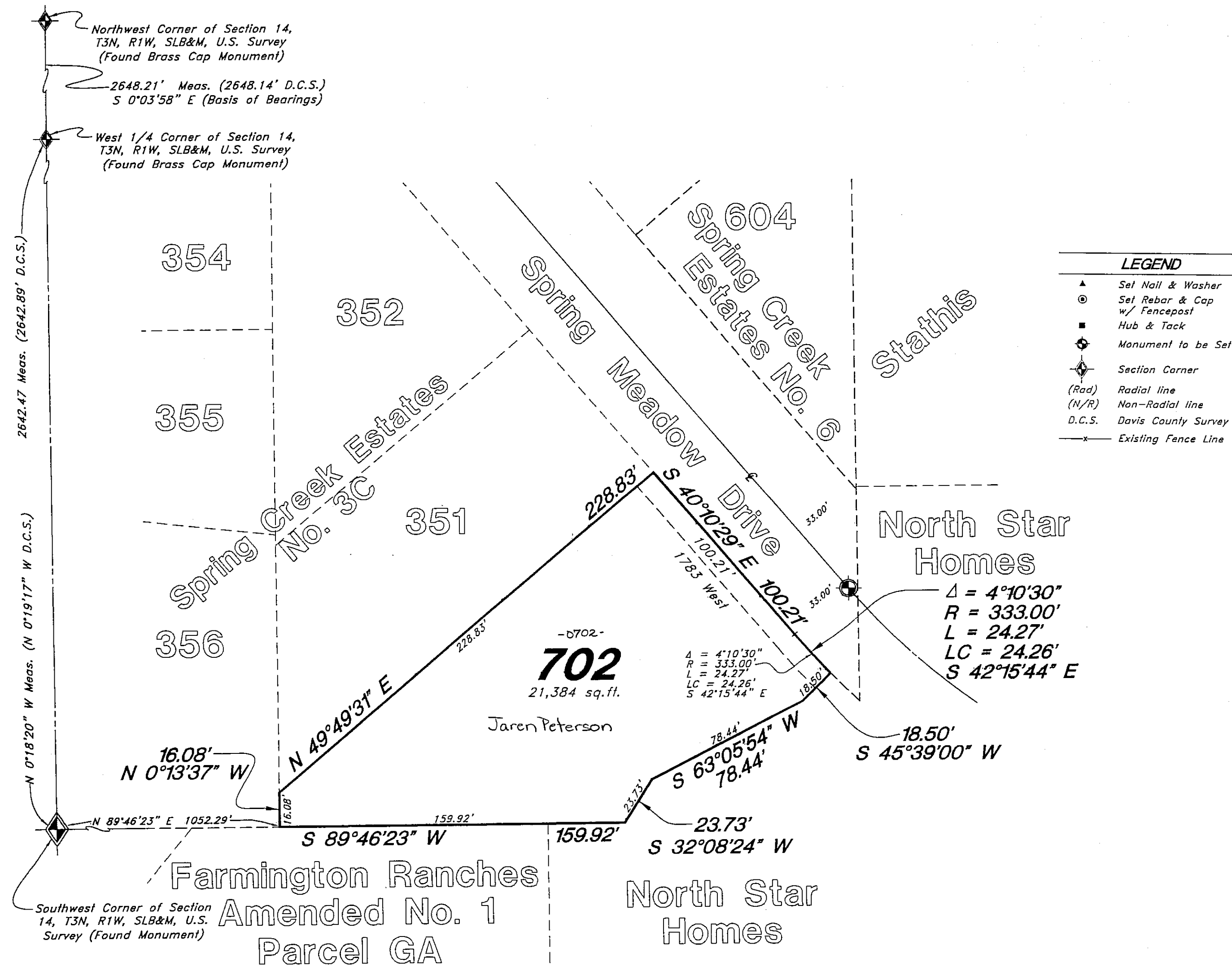
DEVELOPMENT: SPRING CREEK ESTATES NO. 7

CITY: FARMINGTON LOTS: 701 & 702

SW 1/4 OF SEC. 14, T3N, R1W
S.L.M. DAVIS COUNTY, UTAH

FILE #5203
R-10-31-12

08 509 1 of 2



GREAT BASIN ENGINEERING

5746 SOUTH 1475 EAST OGDEN, UTAH 84403
 MAIN (801)394-4515 S.L.C (801)521-0222 FAX (801)392-7544
 WWW.GREATBASINENGINEERING.COM

Spring Creek Estates No. 7

A part of the Southwest 1/4 of Section 14,
T3N, R1W, SLB&M, U.S. Survey
Farmington City, Davis County, Utah

PREFIX

08-509

LAST #
PAGE 2 of 2



SCALE:

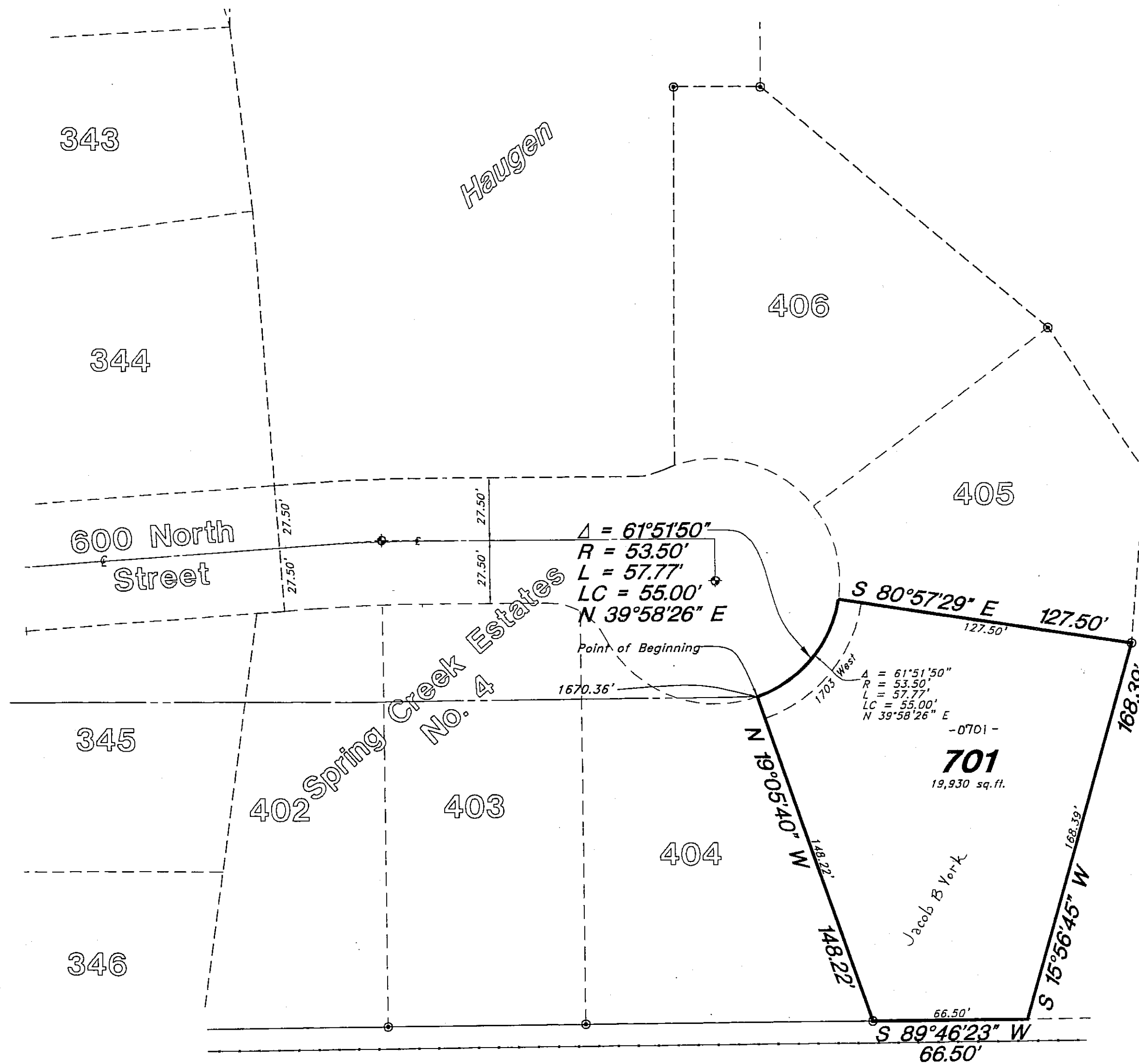
1" = 40'

DEVELOPMENT: SPRING CREEK ESTATES NO. 7

CITY: FARMINGTON LOTS: 701 & 702

SW 1/4 OF SEC. 14, T3N, R1W
S.L.M. DAVIS COUNTY, UTAH

FILE #5203
R-10-31-12



NOTE:
10' wide Public Utility Easement as indicated
by dashed lines, except as otherwise shown.

- LEGEND**
- ▲ Set Nail & Washer
 - ⊙ Set Rebar & Cap w/ Fencepost
 - Hub & Tack
 - ◆ Monument to be Set
 - ⬠ Section Corner
 - (Rad) Radial line
 - (N/R) Non-Radial line
 - D.C.S. Davis County Survey
 - Existing Fence Line

GREAT BASIN ENGINEERING INC.
5746 SOUTH 1475 EAST OGDEN, UTAH 84403
MAIN (801)394-4515 S.L.D (801)521-0222 FAX (801)392-7544
WWW.GREATBASINENGINEERING.COM

08 509 2 of 2