

PREFIX 15

08-499

LAST #
0004



SCALE:
1" = 100'

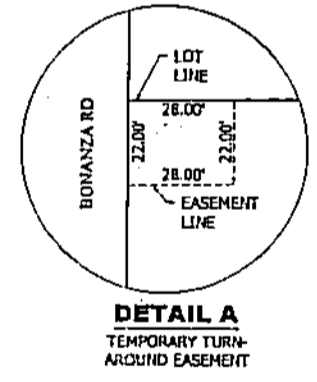
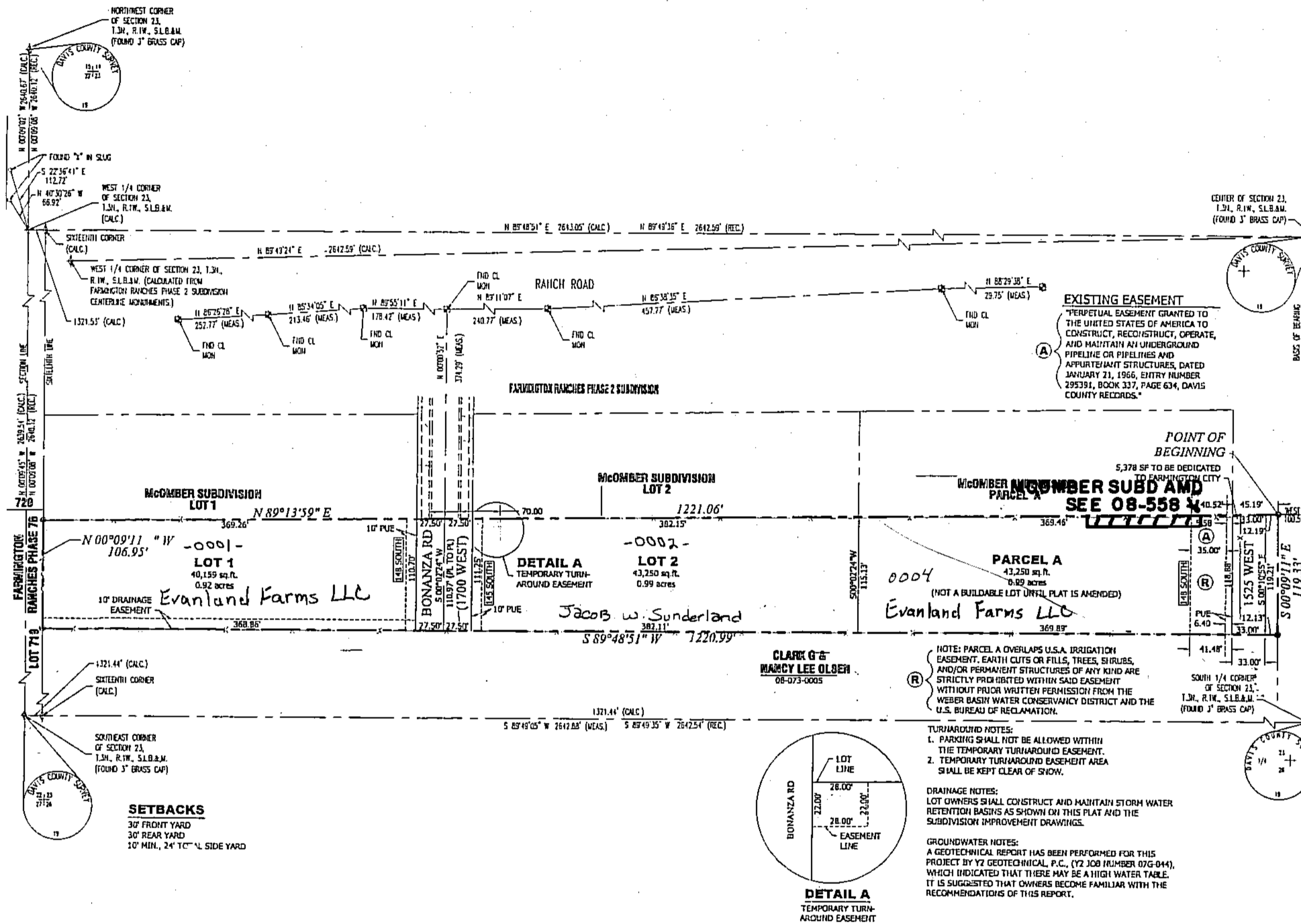
DEVELOPMENT, VAN ZWEDEN SUBDIVISION

CITY: FARMINGTON LOTS: 1 THRU 2 & PARCELA

SW 1/4 OF SEC. 23, T 3N R. 1W
S.L.M. DAVIS COUNTY, UTAH

FILE #5164
R-07-11-12

VAN ZWEDEN SUBDIVISION
LOCATED IN THE SOUTHWEST QUARTER OF SECTION 23,
TOWNSHIP 3 NORTH, RANGE 1 WEST
SALT LAKE BASE AND MERIDIAN
FARMINGTON CITY, DAVIS COUNTY, UTAH



LEGEND

--- BOUNDARY LINE	○ CORNERS TO BE SET WITH A 5/8" REBAR WITH AN ORANGE PLASTIC CAP OR NAIL AND WASHER STAMPER "PINNACLE"
- - - ADJACENT PROPERTY LINE	◇ SECTION CORNER (FOUND)
— SECTION LINE	◇ SECTION CORNER (NOT FOUND)
— LOT LINE	PUE PUBLIC UTILITY EASEMENT
- - - EASEMENT	- - - EXISTING FENCE

PINNACLE
Engineering & Land Surveying, Inc.
2728 North 210 West, Suite 2100
Layton, UT 84041
Phone: (801) 773-1910
Fax: (801) 773-1925

664
08