

Pettingill Estates

A part of the Northeast Quarter of Section 5 T3N, R1W, SLB&M, U. S. Survey
Kaysville City, Davis County, Utah

PREFIX ¹⁶
08-498
LAST #
0002



SCALE:
1" = 50'

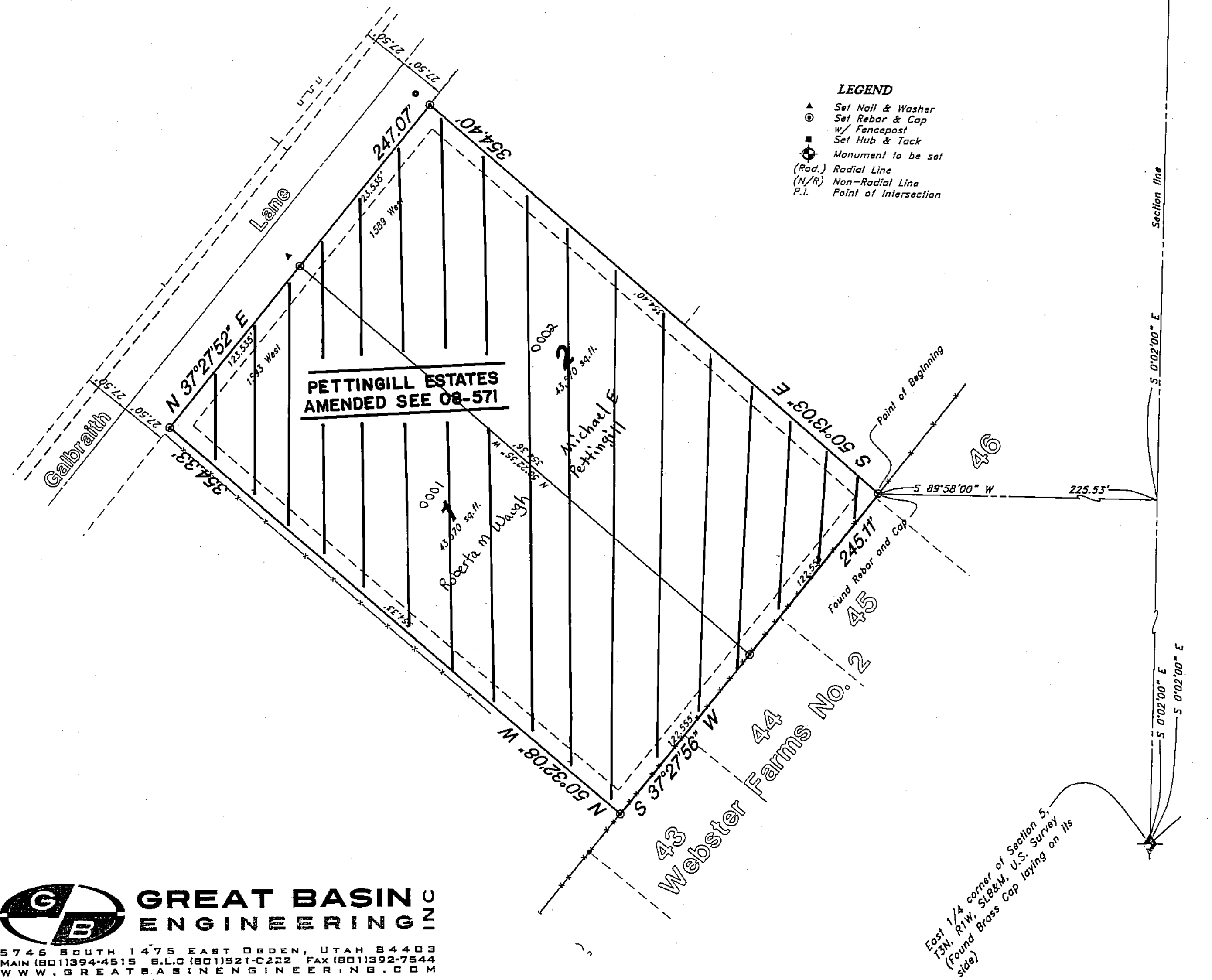
DEVELOPMENT: PETTINGILL ESTATES
CITY: KAYSVILLE LOTS: 1 THRU 2

NE 1/4 OF SEC. 5, T3N R. 1W
S.L.M. DAVIS COUNTY, UTAH

FILE #5163
R-07-10-12

NOTE:
Easements for Public Utility and
Drainage are 10 ft. wide on front, back
and boundaries, and 8 ft. wide on each
side of lot lines as indicated by dashed
lines, unless otherwise shown.

- LEGEND**
- ▲ Set Nail & Washer
 - ⊙ Set Rebar & Cap w/ Fencepost
 - Set Hub & Tack
 - ⊛ Monument to be set
 - (Rad.) Radial Line
 - (N/R) Non-Radial Line
 - P.I. Point of Intersection



GREAT BASIN ENGINEERING INC.
5746 SOUTH 1475 EAST OGDEN, UTAH 84403
MAIN (801)394-4515 S.L.C (801)921-C222 FAX (801)392-7544
WWW.GREATBASINENGINEERING.COM

08 498

East 1/4 corner of Section 5,
T3N, R1W, SLB&M, U.S. Survey
(Found Brass Cap lying on its
side)

Northeast corner of
Section 5, T3N, R1W,
SLB&M, U.S. Survey (Not
found)