

THE VILLAGE AT OLD FARM PLAT "A" SUBDIVISION

AMENDING THE VILLAGE AT OLD FARM P.U.D. PHASE 1 AND A PORTION OF THE VILLAGE AT OLD FARM P.U.D. PHASE 3
FARMINGTON, DAVIS COUNTY, UTAH

LOCATED IN THE SOUTHWEST QUARTER
OF SECTION 12
TOWNSHIP 3 NORTH, RANGE 1 WEST,
SALT LAKE BASE & MERIDIAN
FARMINGTON CITY, DAVIS COUNTY, UTAH

PREFIX

08-496

LAST #
0002



SCALE:
1" = 20'

DEVELOPMENT: THE VILLAGE AT OLD FARM PLAT "A" SUBDIVISION
CITY: FARMINGTON LOTS: 1 THRU 2

SW 1/4 OF SEC. 12, T 3N R 1W
S.L.M. DAVIS COUNTY, UTAH

FILE #5156
R-06-11-12

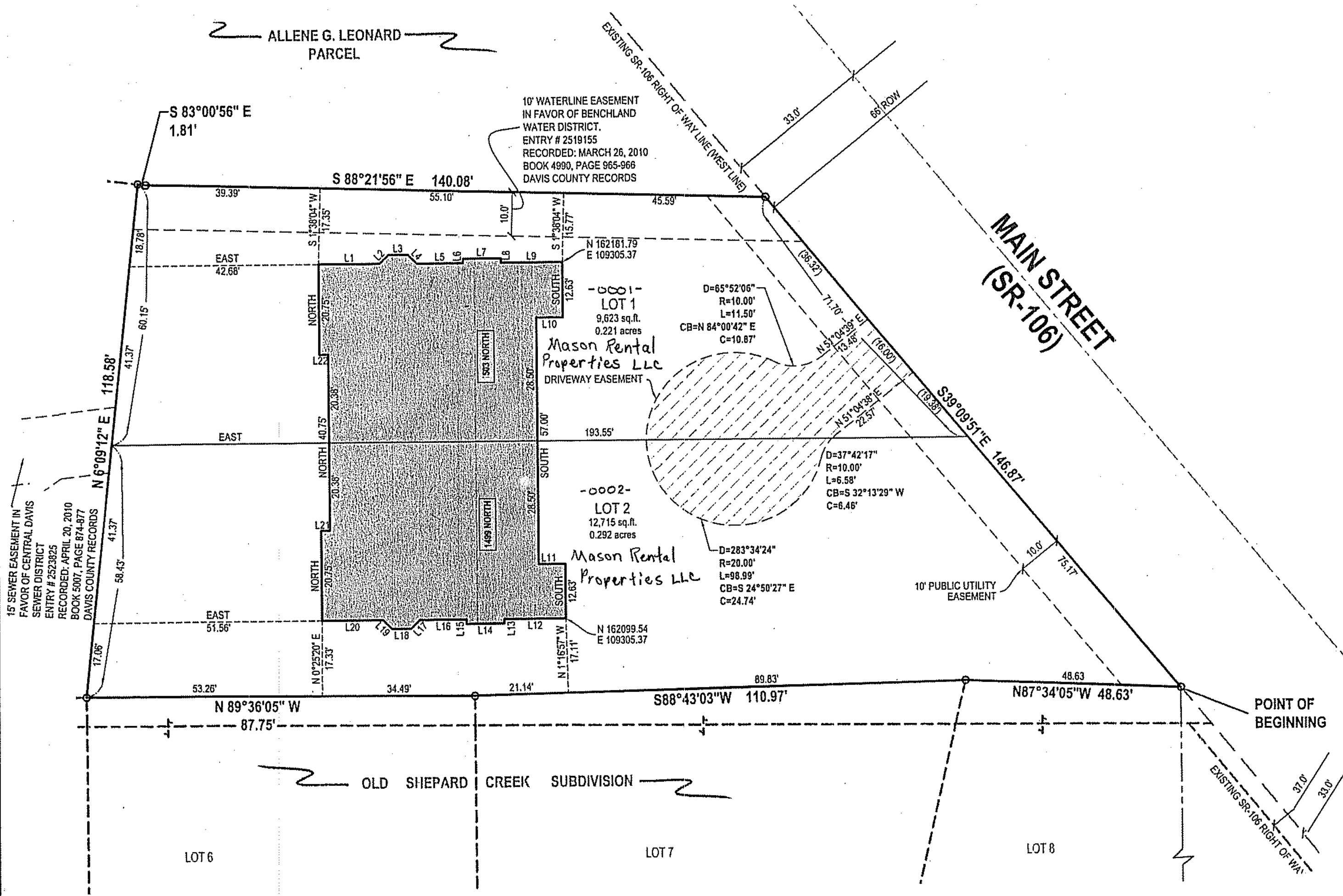
ALLENE G. LEONARD
PARCEL

10' WATERLINE EASEMENT
IN FAVOR OF BENCHLAND
WATER DISTRICT.
ENTRY # 2519155
RECORDED: MARCH 26, 2010
BOOK 4990, PAGE 965-966
DAVIS COUNTY RECORDS

MAIN STREET
(SR-106)

-0001-
LOT 1
9,623 sq. ft.
0.221 acres
Mason Rental
Properties LLC
DRIVEWAY EASEMENT

-0002-
LOT 2
12,715 sq. ft.
0.292 acres
Mason Rental
Properties LLC



LEGEND

- SECTION CORNER
- WITNESS CORNER
- EASEMENTS
- BOUNDARY LINE
- (R) RECORD
- (M) MEASURED

NOTES:

1. COORDINATE VALUES SHOWN ARE BASED ON THE DAVIS COUNTY COORDINATE SYSTEM.
2. REFERENCE GEOTECHNICAL STUDY AND SUPPLEMENTAL STUDIES PREPARED BY GORDON SPILKER, HUBER GEOTECHNICAL DATED JANUARY 23, 2007, NO. 0023-004-06, REGARDING SOIL CHARACTERISTICS FOR THIS SITE.
3. THE COMMON LOT LINE BETWEEN LOT 1 AND LOT 2 IS THROUGH THE CENTER OF THE WALL COMMON TO BOTH UNITS.
4. THE DRIVEWAY EASEMENT IS TOGETHER WITH AND SUBJECT TO BOTH LOT 1 AND LOT 2.
5. THE RECORDING OF THIS PLAT VACATES THE LOT LINES, COMMON AREA, LIMITED COMMON AREA AND PUBLIC UTILITY EASEMENTS SHOWN ON THE VILLAGE AT OLD FARM P.U.D. PHASE 1 AND THE PORTION OF THE VILLAGE AT OLD FARM P.U.D. PHASE 3 INCLUDED IN THIS PLAT.

| LINE | LENGTH | BEARING |
|------|--------|-------------|
| L1 | 13.79' | EAST |
| L2 | 2.83' | S45°00'00"W |
| L3 | 4.41' | EAST |
| L4 | 2.83' | N45°00'00"W |
| L5 | 10.42' | EAST |
| L6 | 1.00' | NORTH |
| L7 | 8.62' | EAST |
| L8 | 1.00' | NORTH |
| L9 | 13.87' | EAST |
| L10 | 6.00' | EAST |
| L11 | 6.00' | EAST |
| L12 | 13.87' | EAST |
| L13 | 1.00' | NORTH |
| L14 | 8.62' | EAST |
| L15 | 1.00' | NORTH |
| L16 | 10.42' | EAST |
| L17 | 2.83' | S45°00'00"W |
| L18 | 4.41' | EAST |
| L19 | 2.83' | N45°00'00"W |
| L20 | 13.79' | EAST |
| L21 | 2.00' | EAST |
| L22 | 2.00' | EAST |



LAYTON
1485 West Hillfield Rd. Suite
204
Layton UT 84041
Phone: 801.547.1100
Fax: 801.593.6315
WWW.ENSIGNUTAH.COM

SALT LAKE CITY
Phone: 801.255.0529
PLEASANT GROVE
Phone: 801.796.8145
TOOLE
Phone: 435.843.3590