

# SUNSET POINTE SUBDIVISION - PHASE 7

Pt of Block 36 Big Creek Plat, Height Bench Survey Farmington  
PART OF THE SOUTHEAST QUARTER OF SECTION 10,

T3N, R1W, SLB&M, U.S. SURVEY

KAYSVILLE CITY, DAVIS COUNTY, UTAH

OCTOBER 2011

Jordan Valley Water Conservancy District  
Owns All Lots Not Marked

PREFIX 12  
08-490  
LAST #  
0704



SCALE:  
1" = 50'

DEVELOPMENT: SUNSET POINTE SUBDIVISION PH. 7  
CITY: KAYSVILLE  
LOTS 701 THRU 704

CENTER 1/4, SEC. 10  
T.3N., R.1W, S.L.B.&M.  
(DAVIS COUNTY BRASS CAP)

2641.05 N00°18'23"E  
BASIS OF BEARING  
(D.C.S.)

EAST  
751.18'

N00°18'23"E  
897.22'

SOUTH 1/4 COR, SEC. 10,  
T.3N., R.1W, S.L.B.&M.  
(DAVIS COUNTY BRASS CAP)

Prepared By:



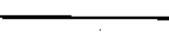
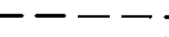



5875 S. ADAMS AVE. PARKWAY  
OGDEN, UT 84405

(801)476-0202

CURVE DATA					
NO.	DELTA	RAD	ARC	TAN	CHORD
C058	06°08'34"	227.50	24.39	12.21	24.38
					N 58°21'53" E

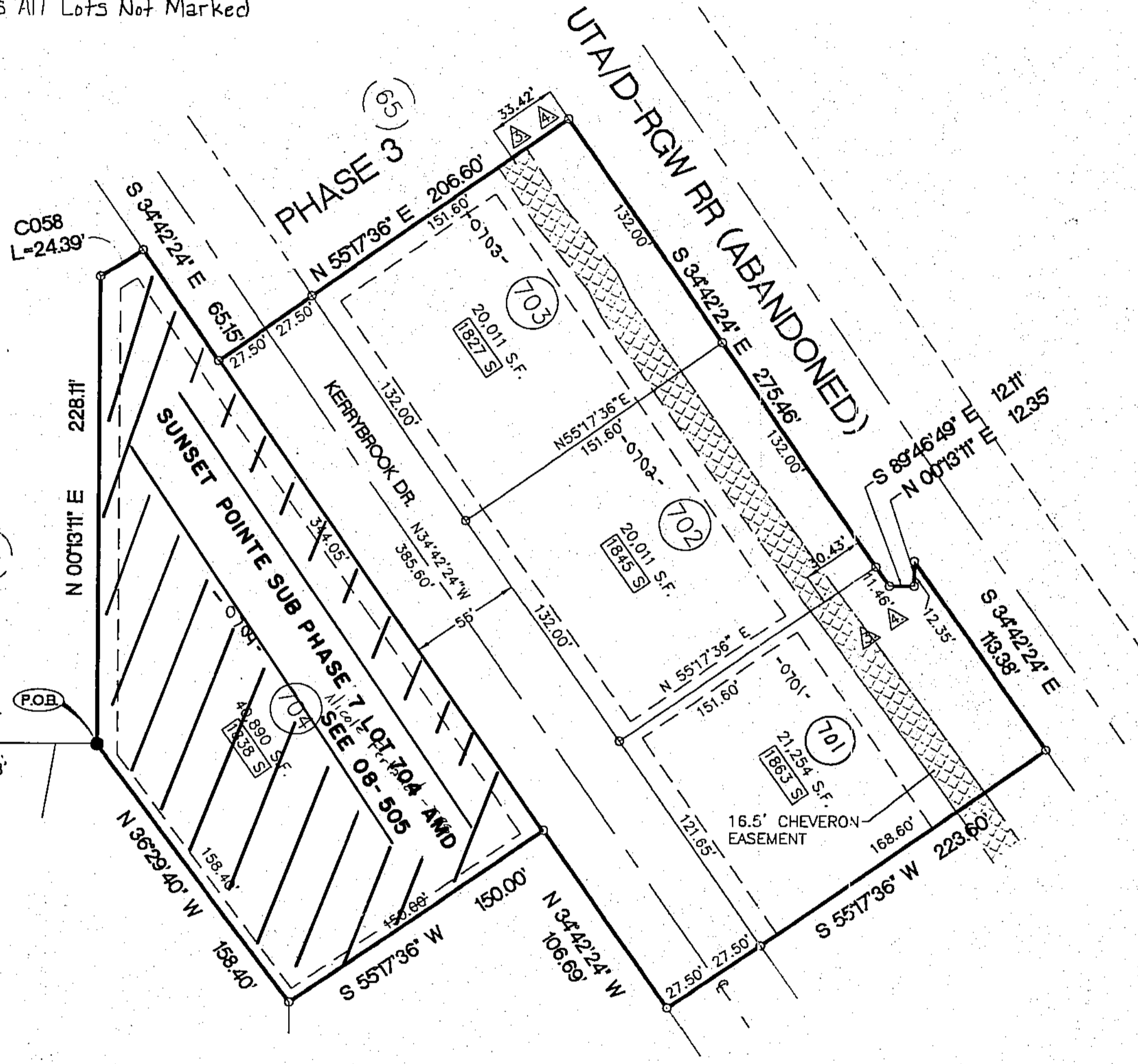
### LEGEND

-  SECTION CORNER
-  SET GARDNER ENGINEERING BAR AND CAP
-  PROPERTY LINE
-  10' PUBLIC UTILITY EASEMENT (P.U.E.) AS SHOWN.
-  CALC POINT (NOTHING SET)

### NOTES:

1. 10 FOOT PUBLIC UTILITY EASEMENTS AS INDICATED BY DASHED LINES UNLESS OTHERWISE SHOWN.
2. #5 REBAR WITH CAP SET AT BACK LOT CORNERS. COPPER RIVET TO BE SET IN CURB AT LOT LINE EXTENSION.
3. CHEVRON PIPE LINE GAS CO. EASEMENT IS 16.5 WIDE FOR TWO CHEVRON OIL PIPELINES THE CENTERLINE OF WHICH COINCIDES WITH THE EASTERLY LINE, THE SECOND LINE BEING 6 FEET PERPENDICULARLY DISTANT WESTERLY FROM SAID CENTERLINE.
4. IT IS RECOMMENDED THAT STRUCTURES BE RESTRICTED FROM BEING BUILT WITHIN 10 FEET OF WESTERLY CHEVRON LINE.
5. WHEN BUILDING NEAR PIPELINE, DEPTH OF COVER OVER PIPELINE TO BE 36" IF GREATER THAN 50' AWAY OR 48" WHEN LESS THAN OR EQUAL TO 50' AWAY.

08490



SE 1/4 SEC. 10, T.3N, R.1W  
S.L.M. DAVIS COUNTY, UTAH  
PART OF BLOCK 36 BIG CREEK PLAT, HEIGHT BENCH SURVEY FARMINGTON

FILE #5116  
R 12-19-11