

DEER RIDGE AT HIDDEN SPRINGS PHASE 2 AMENDED

AMENDING LOTS 30-RD & 31-RD DEER RIDGE AT HIDDEN SPRINGS PHASE 2
 PART OF THE NORTHEAST QUARTER OF SECTION 12,
 TOWNSHIP 3 NORTH, RANGE 1 WEST, SLB&M
 FRUIT HEIGHTS CITY, DAVIS COUNTY, UTAH

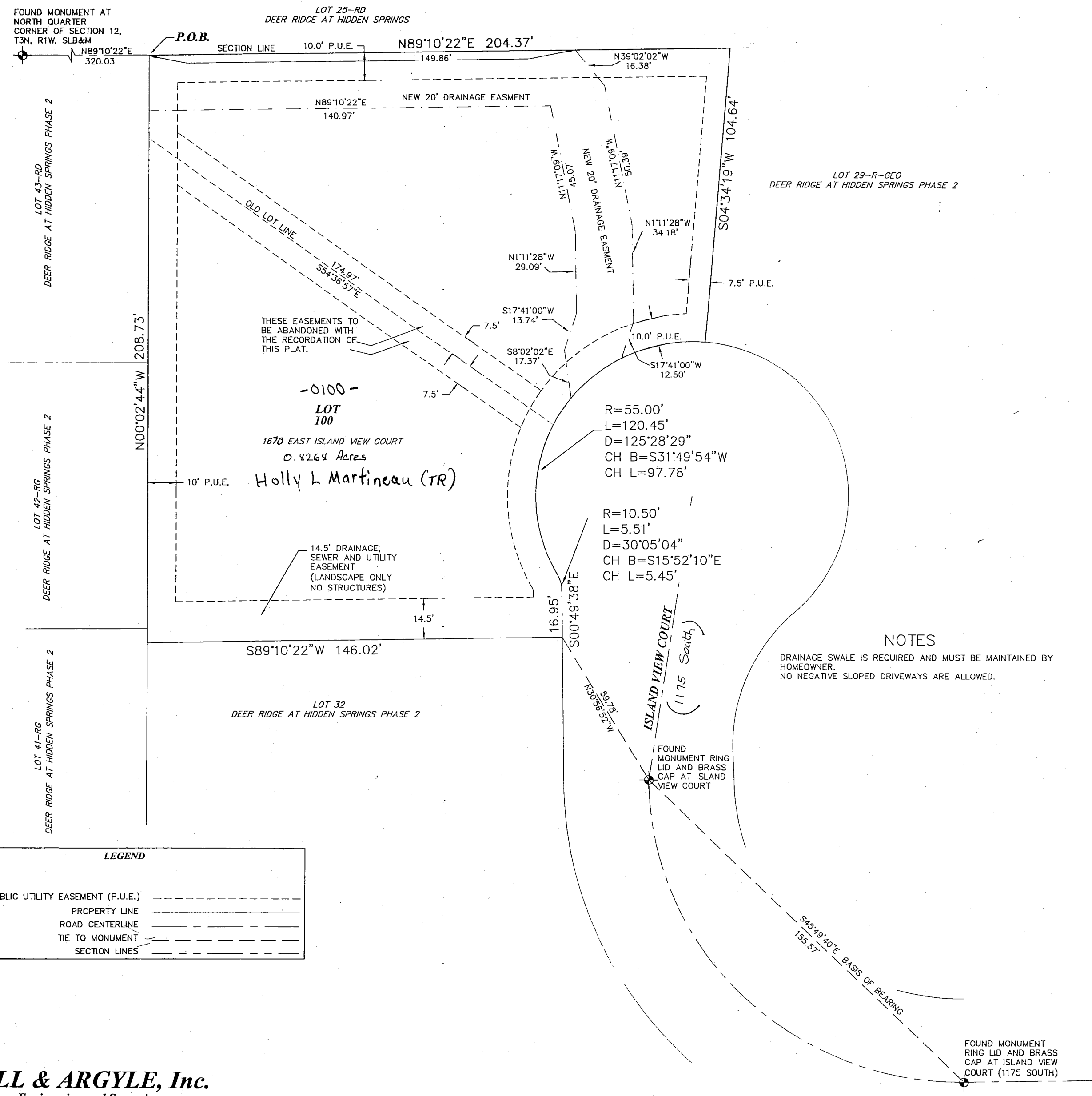
PREFIX
08-475
 LAST #
 0100



SCALE:
1" = 30'

DEVELOPMENT: **DEER RIDGE AT HIDDEN SPRINGS PH. 2 AMENDED**
 CITY: **FRUIT HEIGHTS** **LOT : 100**

NE 1/4 SEC. 12, T 3N R 1W
 S.L.M. DAVIS COUNTY, UTAH
 LOTS 30RD & 31RD DEER RIDGE AT HIDDEN SPRINGS PH. 2
 FILE #5032
 R 09-28-10



LEGEND	
PUBLIC UTILITY EASEMENT (P.U.E.)	---
PROPERTY LINE	—
ROAD CENTERLINE	—
TIE TO MONUMENT	—
SECTION LINES	—

H & A HILL & ARGYLE, Inc.
 Engineering and Surveying
 181 North 200 West, Suite #4, Bountiful, Utah 84010
 (801) 298-2236 Phone, (801) 298-5903 Fax
 09-115 PLAT