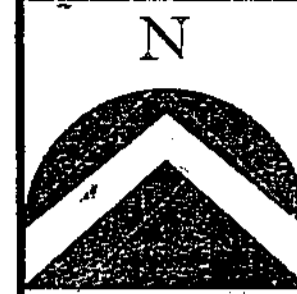


REBECCA'S GARDENS - PHASE 2

A PART OF THE OF SECTION 10, SOUTHWEST QUARTER
TOWNSHIP 3 NORTH, RANGE 1 WEST, SALT LAKE BASE & MERIDIAN
KAYSVILLE CITY,
DAVIS COUNTY, UTAH

Center of Section 10
Township 3 North Range 1 West
Salt Lake Base & Meridian
(Monument found)

PREFIX
08-470
LAST, #
0005

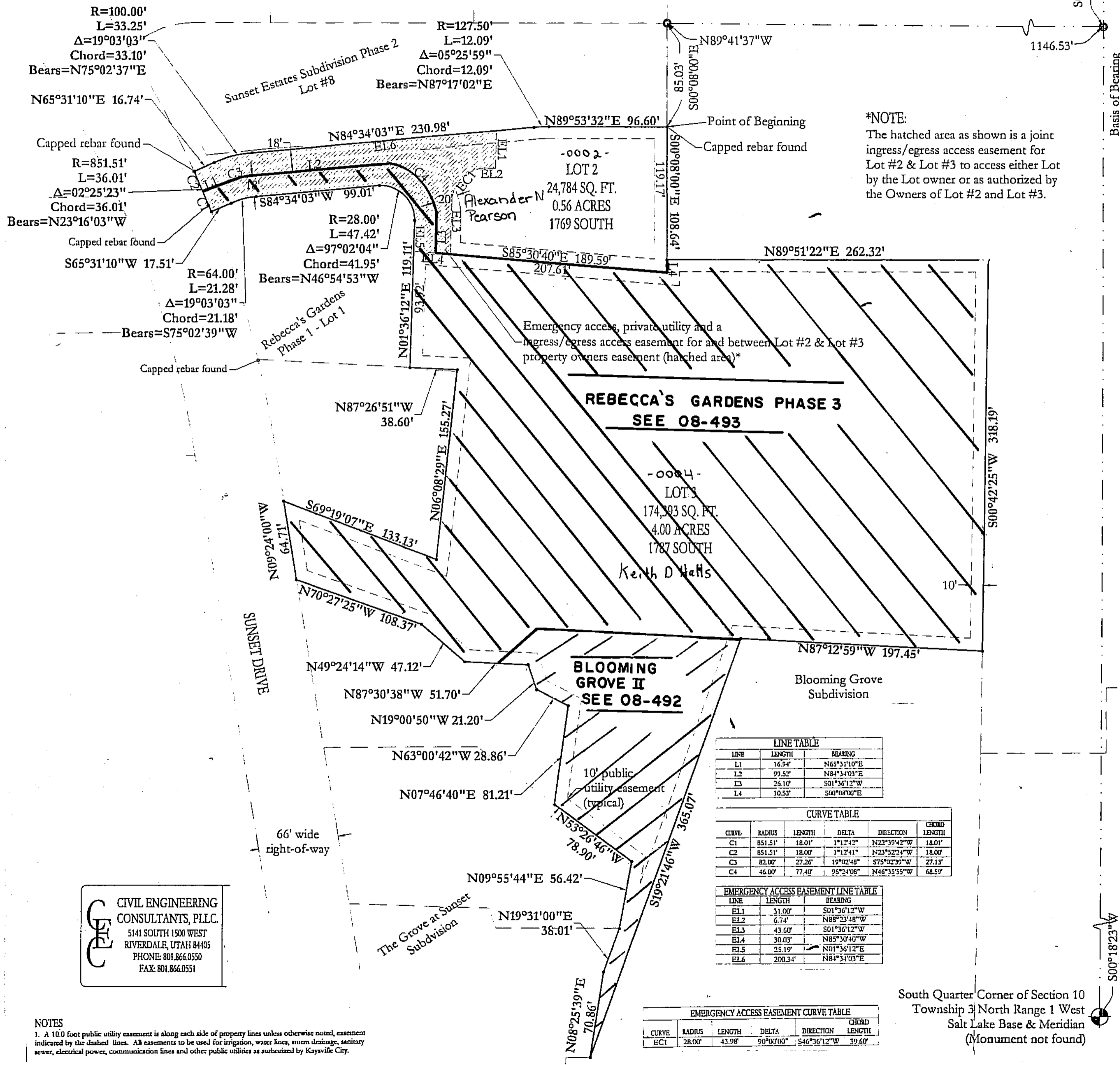


SCALE:
1" = 60'

DEVELOPMENT: REBECCA'S GARDENS PH. 2
CITY: KAYSVILLE
LOTS: 2 & 3

SW 1/4 SEC. 10, T.3N, R.1W
S.L.M. DAVIS COUNTY, UTAH

FILE # 5010
R 04-30-10



*NOTE:
The hatched area as shown is a joint ingress/egress access easement for Lot #2 & Lot #3 to access either Lot by the Lot owner or as authorized by the Owners of Lot #2 and Lot #3.

Emergency access, private utility and a ingress/egress access easement for and between Lot #2 & Lot #3 property owners easement (hatched area)*

LINE	LENGTH	BEARING
L1	16.94'	N65°31'10"E
L2	99.52'	N84°34'03"E
L3	26.10'	S01°36'12"W
L4	10.53'	S00°08'00"E

CURVE	RADIUS	LENGTH	DELTA	DIRECTION	CHORD LENGTH
C1	851.51'	18.01'	1°12'42"	N23°19'42"W	18.01'
C2	851.51'	18.00'	1°12'41"	N23°19'24"W	18.00'
C3	82.00'	27.26'	19°02'48"	S75°02'39"W	27.13'
C4	46.00'	77.40'	96°24'08"	N46°35'55"W	68.59'

LINE	LENGTH	BEARING
EL1	31.00'	S01°36'12"W
EL2	6.74'	N88°23'48"W
EL3	43.60'	S01°36'12"W
EL4	30.03'	N85°30'40"W
EL5	25.19'	N01°36'12"E
EL6	200.34'	N81°31'03"E

CURVE	RADIUS	LENGTH	DELTA	DIRECTION	CHORD LENGTH
EC1	28.00'	43.98'	90°00'00"	S46°36'12"W	32.60'

CIVIL ENGINEERING CONSULTANTS, PLLC.
5141 SOUTH 1500 WEST
RIVERDALE, UTAH 84405
PHONE: 801.866.0550
FAX: 801.866.0551

NOTES
1. A 10.0 foot public utility easement is along each side of property lines unless otherwise noted, easement indicated by the dashed lines. All easements to be used for irrigation, water lines, storm drainage, sanitary sewer, electrical power, communication lines and other public utilities as authorized by Kayville City.

470
8
08