

# VILLAGE AT OLD FARM PUD - PHASE 3, THE FARMINGTON

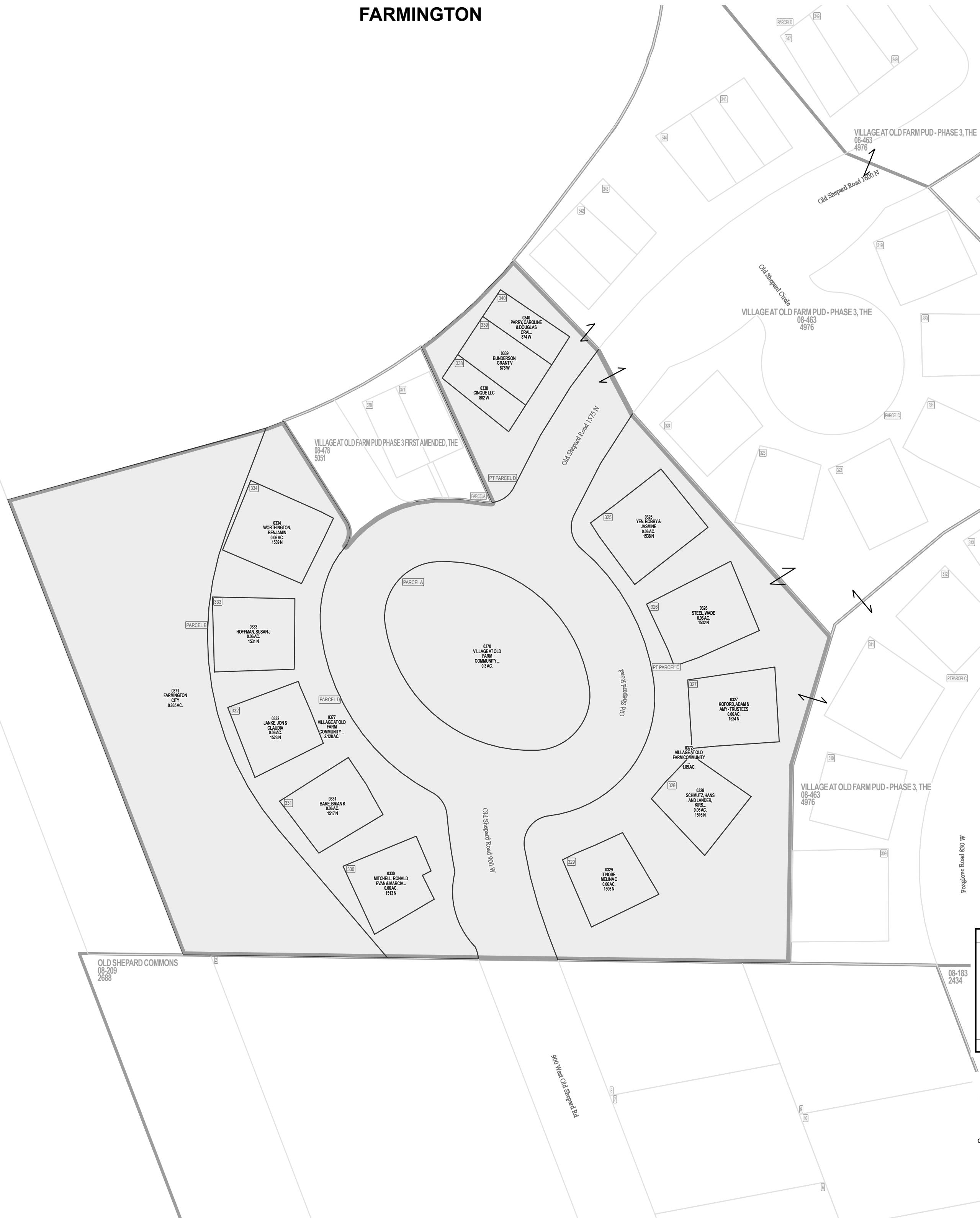
Tax ID Prefix

**08-463**

Plat ID: 4976

Sheet 1 of 5

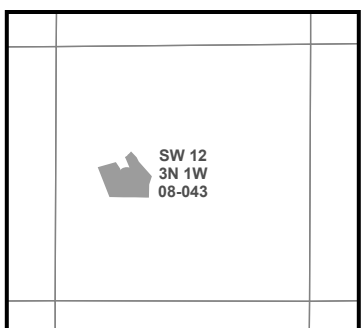
Year Recorded: 2009



**Parcel ID**

**Lot Number**

1 inch = 50 feet



SLB & M

NOTE: Distance, bearings and radius values are approximate. User needs to refer to the recorded legal descriptions for exact bearing and distances. For cadastral or technical information, see the dedicated plat and or legal descriptions in recorded documents.



# VILLAGE AT OLD FARM PUD - PHASE 3, THE FARMINGTON

Tax ID Prefix

**08-463**

Plat ID: 4976

Sheet 2 of 5

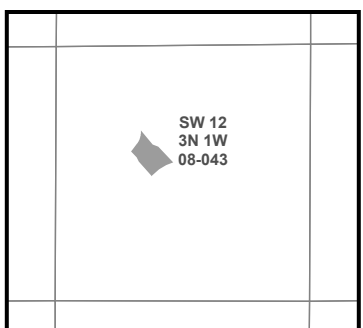
Year Recorded: 2009



**Parcel ID**

**Lot Number**

1 inch = 40 feet



SLB & M

NOTE: Distance, bearings and radius values are approximate. User needs to refer to the recorded legal descriptions for exact bearing and distances. For cadastral or technical information, see the dedicated plat and/or legal descriptions in recorded documents.



# VILLAGE AT OLD FARM PUD - PHASE 3, THE FARMINGTON

Tax ID Prefix

**08-463**

Plat ID: 4976

Sheet 3 of 5

Year Recorded: 2009

VILLAGE AT OLD FARM PHASE 1 COMMERCIAL SUBDIVISION, THE  
08-451  
4871

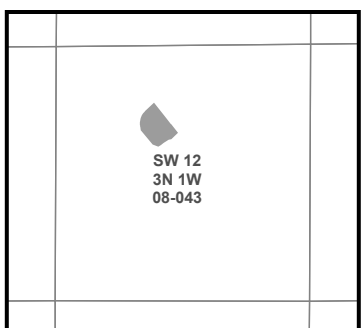
SOMERSET FARM II  
08-048  
1238



**Parcel ID**

**Lot Number**

1 inch = 40 feet



SLB & M

NOTE: Distance, bearings and radius values are approximate. User needs to refer to the recorded legal descriptions for exact bearing and distances. For cadastral or technical information, see the dedicated plat and or legal descriptions in recorded documents.



VILLAGE AT OLD FARM PUD - PHASE 3, THE  
08-463  
4976

VILLAGE AT OLD FARM PUD - PHASE 3, THE  
08-463  
4976

# VILLAGE AT OLD FARM PUD - PHASE 3, THE FARMINGTON

Tax ID Prefix

**08-463**

Plat ID: 4976

Sheet 4 of 5

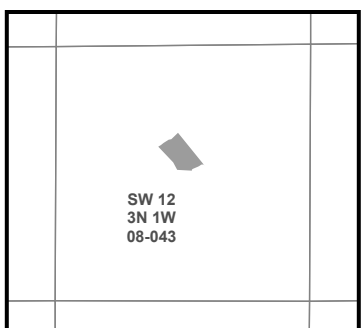
Year Recorded: 2009



**Parcel ID**

**Lot Number**

1 inch = 40 feet



SLB & M

NOTE: Distance, bearings and radius values are approximate. User needs to refer to the recorded legal descriptions for exact bearing and distances. For cadastral or technical information, see the dedicated plat and or legal descriptions in recorded documents.



