

NORTH MAIN STREET CHURCH SUBDIVISION

A PART OF THE NORTHEAST QUARTER OF SECTION 13,
TOWNSHIP 3 NORTH, RANGE 1 WEST, SALT LAKE BASE & MERIDIAN
FARMINGTON CITY, DAVIS COUNTY, UTAH

PREFIX
08-459

LAST #
0001

N

SCALE:
1" = 60'

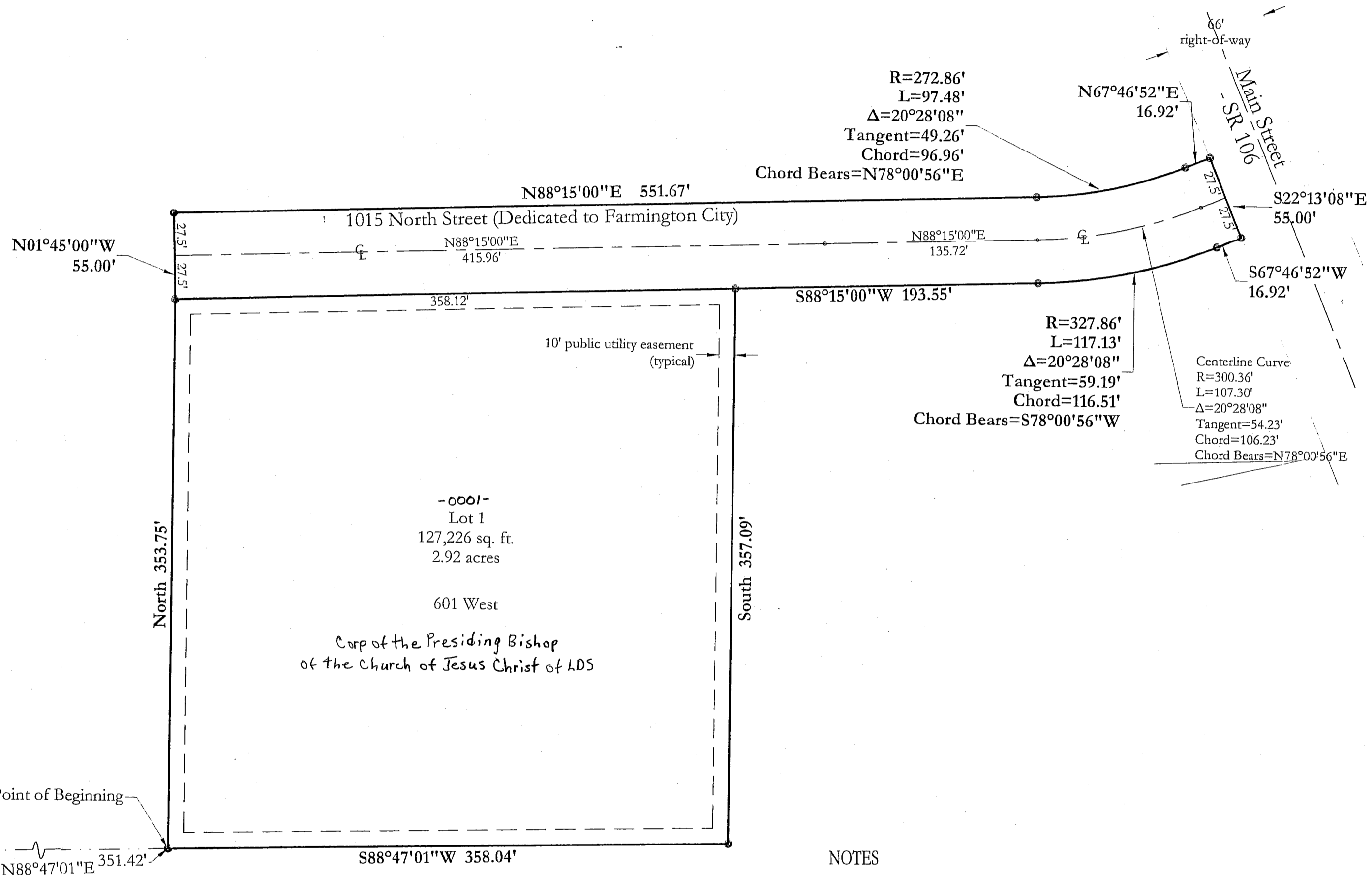
DEVELOPMENT: NORTH MAIN STREET CHURCH SUBDIVISION

CITY: FARMINGTON LOT: 1

NE 1/4 SEC. 13, T.3N, R.1W

S.L.M. DAVIS COUNTY, UTAH

FILE # 4942
R 07-02-09



NOTES

1. A 10.0 foot utility easement each side of property line unless otherwise noted, easement indicated by the dashed lines. All easements to be used for irrigation, water lines, storm drainage, sanitary sewer, electrical power, communication lines and other public utilities.
2. A soil report has been prepared and submitted to the City and is on file for review.

Center of Section 13
Township 3 North Range 1 West
Salt Lake Base & Meridian
(Monument not found - Record location)

CE
CIVIL ENGINEERING
CONSULTANTS, PLLC.
5141 SOUTH 1500 WEST
RIVERDALE, UTAH 84405
801.866.0550