

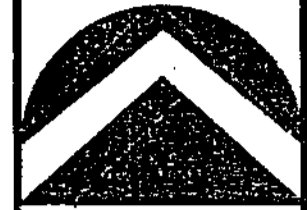
KAYSVILLE SUNSET EQUESTRIAN ESTATES  
PLAT 14A

A SUBDIVISION LOCATED IN THE NORTH EAST QUARTER OF SECTION 9,  
TOWNSHIP 3 NORTH, RANGE 1 WEST, SALT LAKE BASE AND MERIDIAN,  
KAYSVILLE CITY, DAVIS COUNTY, ~~UTAH AND VACATING PARCEL D OF~~  
~~KAYSVILLE SUNSET EQUESTRIAN ESTATES PLAT B~~

PREFIX  
08-453

LAST #  
0002

N



SCALE:  
1" = 100'

DEVELOPMENT: KAYSVILLE SUNSET EQUESTRIAN ESTATES PLAT 14A

CITY: KAYSVILLE LOT: 1 & PARCEL A

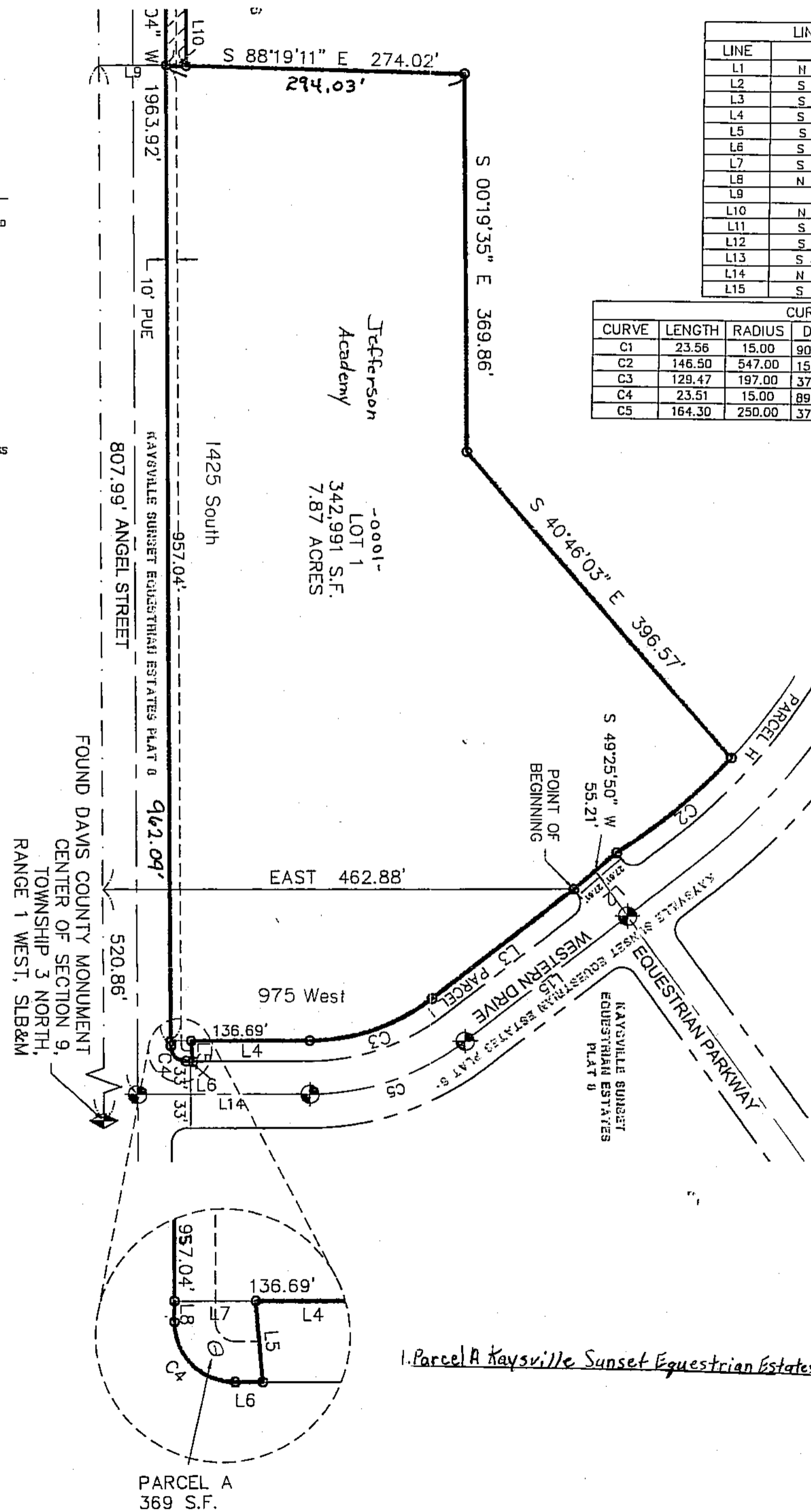
NE 1/4 SEC. 09, T.3N, R.1W

S.L.M. DAVIS COUNTY, UTAH

FILE # 4883  
R 11-07-08

LEGEND:

- DAVIS COUNTY SECTION CORNER MONUMENTS FOUND (AS NOTED)
- STREET MONUMENT TO BE SET / MONUMENT FROM PREVIOUS PLATTING
- SET REBAR W/ CAP MARKED "BINGHAM ENG."
- SUBDIVISION BOUNDARY LINE
- LOT LINE
- SECTION LINE
- RIGHT-OF-WAY LINE
- CENTERLINE
- 10.00' WIDE PUBLIC UTILITY EASEMENT LINE (UNLESS OTHERWISE NOTED)



LINE	BEARING	LENGTH
L1	N 89°43'56" E	5.00
L2	S 49°25'50" W	55.21
L3	S 52°16'04" W	175.95
L4	S 89°55'23" W	116.69
L5	S 05°14'26" E	20.08
L6	S 89°55'23" W	6.79
L7	S 89°55'23" W	20.00
L8	N 00°16'04" W	5.05
L9	EAST *	66.12
L10	N 88°19'11" W	20.01
L11	S 00°16'04" E	684.02
L12	S 00°16'04" E	683.34
L13	S 89°43'56" W	20.00
L14	N 89°55'23" E	169.52
L15	S 52°16'04" W	201.46

CURVE	LENGTH	RADIUS	DELTA	CHORD	CHORD DIST.
C1	23.56	15.00	90°00'00"	S 44°43'56" W	21.21
C2	146.50	547.00	15°20'42"	N 50°19'29" E	146.06
C3	129.47	197.00	37°39'19"	N 71°05'43" E	127.15
C4	23.51	15.00	89°48'34"	S 45°10'20" E	21.18
C5	164.30	250.00	37°39'19"	N 71°05'43" E	161.36

453

08

**BINGHAM ENGINEERING**  
5225 Wiley Post Way Suite 200, Salt Lake City, UT 84116  
(801) 532-2520 www.binghamnet.com

1. Parcel A Kayville Sunset Equestrian Estates 0002

PARCEL A  
369 S.F.