

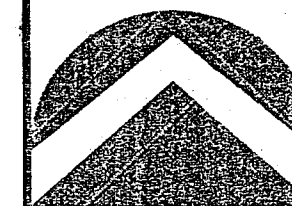
THE VILLAGE AT OLD FARM PHASE 1 COMMERCIAL SUBDIVISION IN FARMINGTON, DAVIS COUNTY, UTAH

LOCATED IN THE SOUTHWEST QUARTER OF SECTION 12
TOWNSHIP 3 NORTH, RANGE 1 WEST, SALT LAKE BASE & MERIDIAN
FARMINGTON CITY, DAVIS COUNTY, UTAH

PREFIX
08-451

LAST #
0003

N



SCALE:
1" = 50'

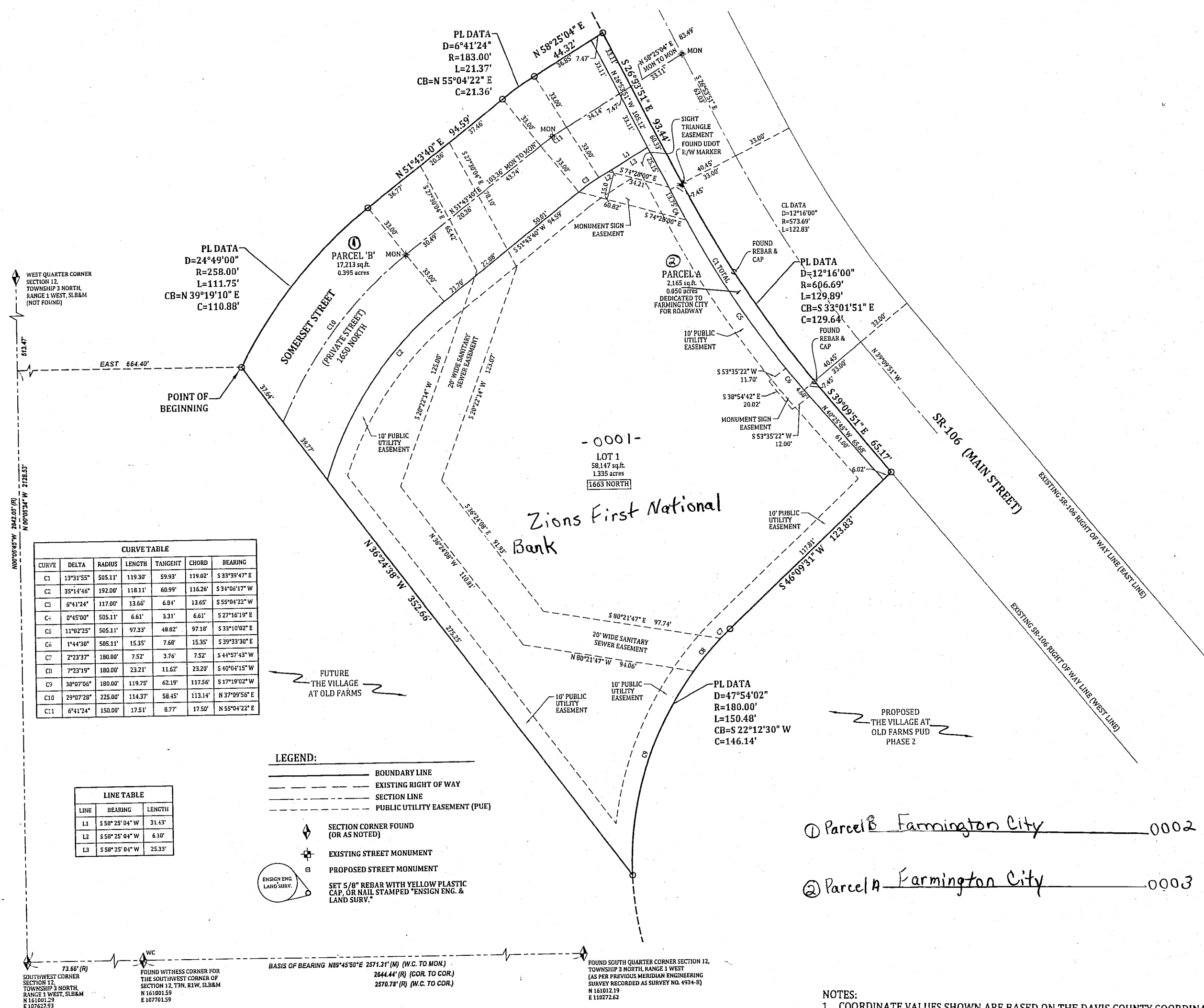
DEVELOPMENT: THE VILLAGE AT OLD FARM PH. 1 COMMERCIAL SUBD

CITY: FARMINGTON LOT: 1 & PARCELS A&B

SW 1/4 SEC. 12, T. 3N, R. 1W

S.L.M. DAVIS COUNTY, UTAH

FILE # 4871
R 10-02-08



CURVE	DELTA	RADIUS	LENGTH	TANGENT	CHORD	BEARING
C1	13°31'55"	505.11'	119.30'	59.93'	119.02'	S33°39'47"E
C2	33°14'46"	192.00'	118.11'	60.99'	116.26'	S31°06'17"W
C3	0°41'24"	117.00'	13.66'	6.81'	13.65'	S55°04'22"W
C4	0°45'00"	505.11'	6.61'	3.31'	6.61'	S27°16'19"E
C5	11°02'25"	505.11'	97.33'	48.82'	97.10'	S33°10'02"E
C6	1°44'30"	505.11'	15.35'	7.68'	15.35'	S39°33'30"E
C7	2°23'37"	180.00'	7.52'	3.76'	7.52'	S44°57'43"W
C8	7°23'19"	180.00'	23.21'	11.62'	23.20'	S40°04'15"W
C9	38°07'06"	180.00'	119.25'	62.19'	117.56'	S17°19'02"W
C10	29°07'28"	225.00'	114.37'	58.45'	113.14'	N37°09'56"E
C11	6°41'24"	150.00'	17.51'	8.77'	17.50'	N59°04'22"E

LINE	BEARING	LENGTH
L1	S58°25'04"W	31.43'
L2	S58°25'04"W	6.10'
L3	S58°25'04"W	25.33'

- LEGEND:**
- BOUNDARY LINE
 - - - EXISTING RIGHT OF WAY
 - - - SECTION LINE
 - - - PUBLIC UTILITY EASEMENT (PUE)
 - ◆ SECTION CORNER FOUND (OR AS NOTED)
 - ⊕ EXISTING STREET MONUMENT
 - ⊙ PROPOSED STREET MONUMENT
 - ⊕ SET 5/8" REBAR WITH YELLOW PLASTIC CAP, OR NAIL STAMPED "ENSGN ENG. & LAND SURV."

① Parcel B Farmington City 0002

② Parcel A Farmington City 0003

- NOTES:**
- COORDINATE VALUES SHOWN ARE BASED ON THE DAVIS COUNTY COORDINATE SYSTEM.
 - REFERENCE GEOTECHNICAL STUDY AND SUPPLEMENTAL STUDIES PREPARED BY GORDON SPILKER, HUBER GEOTECHNICAL DATED JANUARY 23, 2007, NO. 0023-004-06, REGARDING SOIL CHARACTERISTICS FOR THIS SITE.

SHEET 1 OF 1

PROJECT NUMBER: 4075
MANAGER: RQE
DRAWN BY: KFW
CHECKED BY: KRR
DATE: 9/8/08

SALT LAKE CITY
90 E. East Union Blvd
Suite 100
Midvale UT 84047
Phone: 801.255.0529
Fax: 801.255.4449

LAYTON
Phone: 801.547.1100

PLEASANT GROVE
Phone: 801.796.8145

TOOELE
Phone: 435.843.3590

www.ensgnutill.com