

# FARMINGTON RANCHES PHASE 3 SUBDIVISION AMENDED No 1

## AMENDING FARMINGTON RANCHES PHASE 3 SUBDIVISION PARCEL 'G'

LOCATED IN THE NORTHWEST QUARTER OF SECTION 23,  
TOWNSHIP 3 NORTH, RANGE 1 WEST, SALT LAKE BASE AND MERIDIAN  
FARMINGTON CITY, DAVIS COUNTY, UTAH

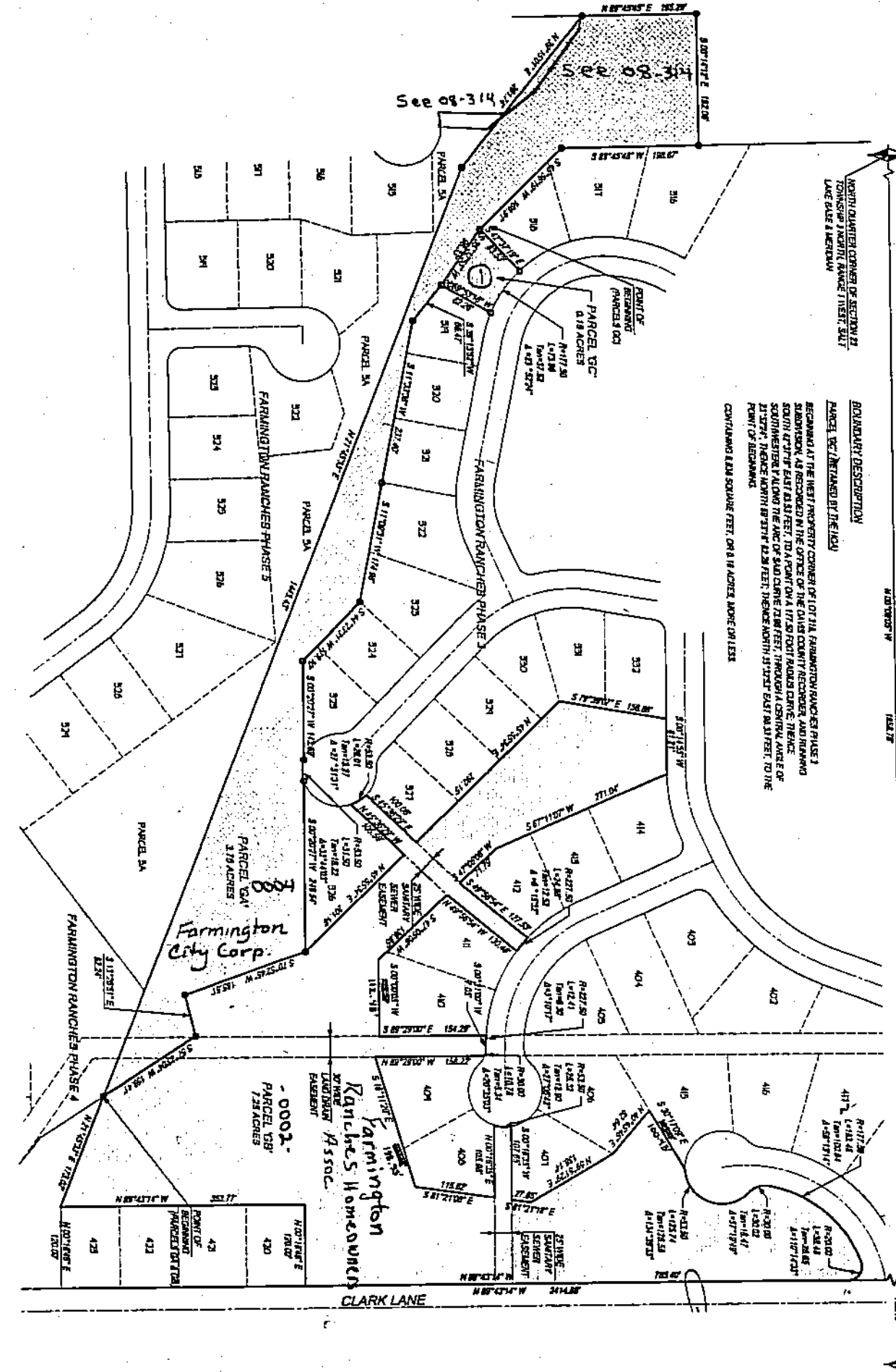
PREFIX #  
08-443

LAST #  
0004

N



SCALE:  
1" = 200'



① Farmington Ranches Homeowners Assoc. 0003

LEGEND:

- SECTION CORNER
- PROPERTY CORNER
- PROPERTY LINE
- ADJACENT PROPERTY LINE
- ROAD CENTERLINE
- EASEMENT BOUNDARY

DEVELOPMENT: FARMINGTON RANCHES PH. 3 AMENDED NO. 1

CITY: FARMINGTON PARCELS: GA, GB, GC

NW 1/4 SEC. 23, T.3N, R.1W

S.L.M. DAVIS COUNTY, UTAH

FILE # 4818  
R 04-28-08

443

08