

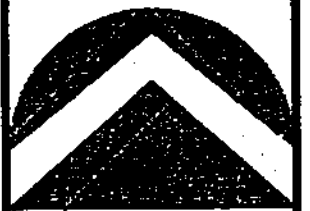
THE VILLAGE AT OLD FARM P.U.D. - PHASE 1 IN FARMINGTON, DAVIS COUNTY, UTAH

LOCATED IN THE SOUTHWEST QUARTER OF SECTION 12
TOWNSHIP 3 NORTH, RANGE 1 WEST, SALT LAKE BASE & MERIDIAN
FARMINGTON CITY, DAVIS COUNTY, UTAH

PREFIX 12
08-435

LAST #
0003

N



SCALE:
1" = 20'

LINE	LENGTH	BEARING
L1	13.79'	EAST
L2	2.83'	S45°00'00"W
L3	4.41'	EAST
L4	2.83'	N45°00'00"W
L5	10.42'	EAST
L6	1.00'	NORTH
L7	8.62'	EAST
L8	1.00'	NORTH
L9	13.87'	EAST
L10	6.00'	EAST
L11	6.00'	EAST
L12	13.87'	EAST
L13	1.00'	NORTH
L14	8.62'	EAST
L15	1.00'	NORTH
L16	10.42'	EAST
L17	2.83'	S45°00'00"W
L18	4.41'	EAST
L19	2.83'	N45°00'00"W
L20	13.79'	EAST
L21	2.00'	EAST
L22	2.00'	EAST

Note: See Sheet 3 of 3 for wall and interior dimensions

NOTES:

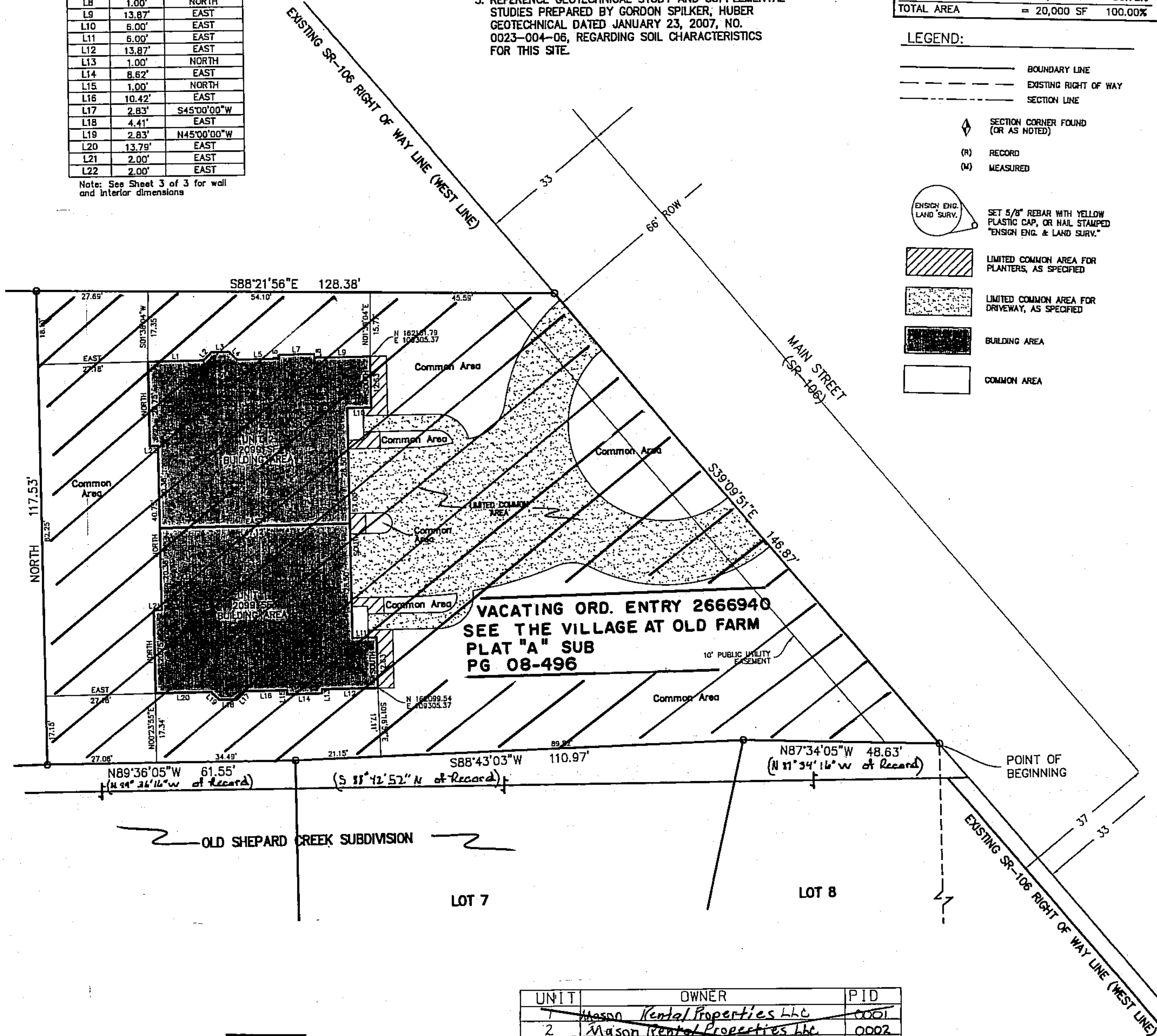
- ALL SIDEWALKS WILL BE MAINTAINED BY THE VILLAGE AT OLD FARMS P.U.D. HOMEOWNERS ASSOCIATION (HOA) AND ALL SNOW REMOVAL OF THE SIDEWALKS WILL BE DONE BY THE HOA.
- COORDINATE VALUES SHOWN ARE BASED ON THE DAVIS COUNTY COORDINATE SYSTEM.
- REFERENCE GEOTECHNICAL STUDY AND SUPPLEMENTAL STUDIES PREPARED BY GORDON SPILKER, HUBER GEOTECHNICAL DATED JANUARY 23, 2007, NO. 0023-004-06, REGARDING SOIL CHARACTERISTICS FOR THIS SITE.

UNIT	SQ. FT	ADDRESS
1	4,282	1499 N MAIN STREET
2	4,282	1503 N MAIN STREET

TOTAL BUILDING AREA	= 4,198 SF	20.99%
LIMITED COMMON DRIVEWAY AREA	= 3,453 SF	17.26%
LIMITED COMMON PLANTER AREA	= 194 SF	0.97%
COMMON AREA	= 12,155 SF	60.78%
TOTAL AREA	= 20,000 SF	100.00%

LEGEND:

- BOUNDARY LINE
- EXISTING RIGHT OF WAY
- SECTION LINE
- SECTION CORNER FOUND (OR AS NOTED)
- (R) RECORD
- (M) MEASURED
- ENSIGN ENG. LAND SURV. SET 5/8" REBAR WITH YELLOW PLASTIC CAP, OR NAIL STAMPED "ENSGN ENG. & LAND SURV."
- LIMITED COMMON AREA FOR PLANTERS, AS SPECIFIED
- LIMITED COMMON AREA FOR DRIVEWAY, AS SPECIFIED
- BUILDING AREA
- COMMON AREA



UNIT	OWNER	PID
1	Mason Rental Properties LLC	0001
2	Mason Rental Properties LLC	0002
Common Area	Mason Rental Properties LLC	0003

SALT LAKE CITY
90 E. Fort Union Blvd
Suite 100
Midvale UT 84047
Phone: 801.255.0529
Fax: 801.255.4448

LAYTON
1485 West Hillfield Rd.
Suite 204
Layton UT 84041
Phone: 801.547.1100
Fax: 801.583.6315

PLEASANT GROVE
795 South Main Street
Pleasant Grove UT 84062
Phone: 801.796.8145
Fax: 801.796.8147



435

08

DEVELOPMENT: THE VILLAGE AT OLD FARM PUD PH. 1

CITY: FARMINGTON UNITS: 1 THRU 2 & COMMON AREA

SW 1/4 SEC. 12, T.3N, R.1W

S.L.M. DAVIS COUNTY, UTAH

FILE # 4757
R 12-31-07