

Carter Subdivision

Being a Part of the North Half of Section 4, T.3N., R.1W., S.L.B. & M.
 Kaysville City, Davis County, Utah
 4 SW 33-4N-1W

PREFIX
 08-434¹⁵

LAST #

0003

N



SCALE:

1" = 50'

DEVELOPMENT: CARTER SUBDIVISION

CITY: KAYSVILLE LOTS: 1 THRU 3

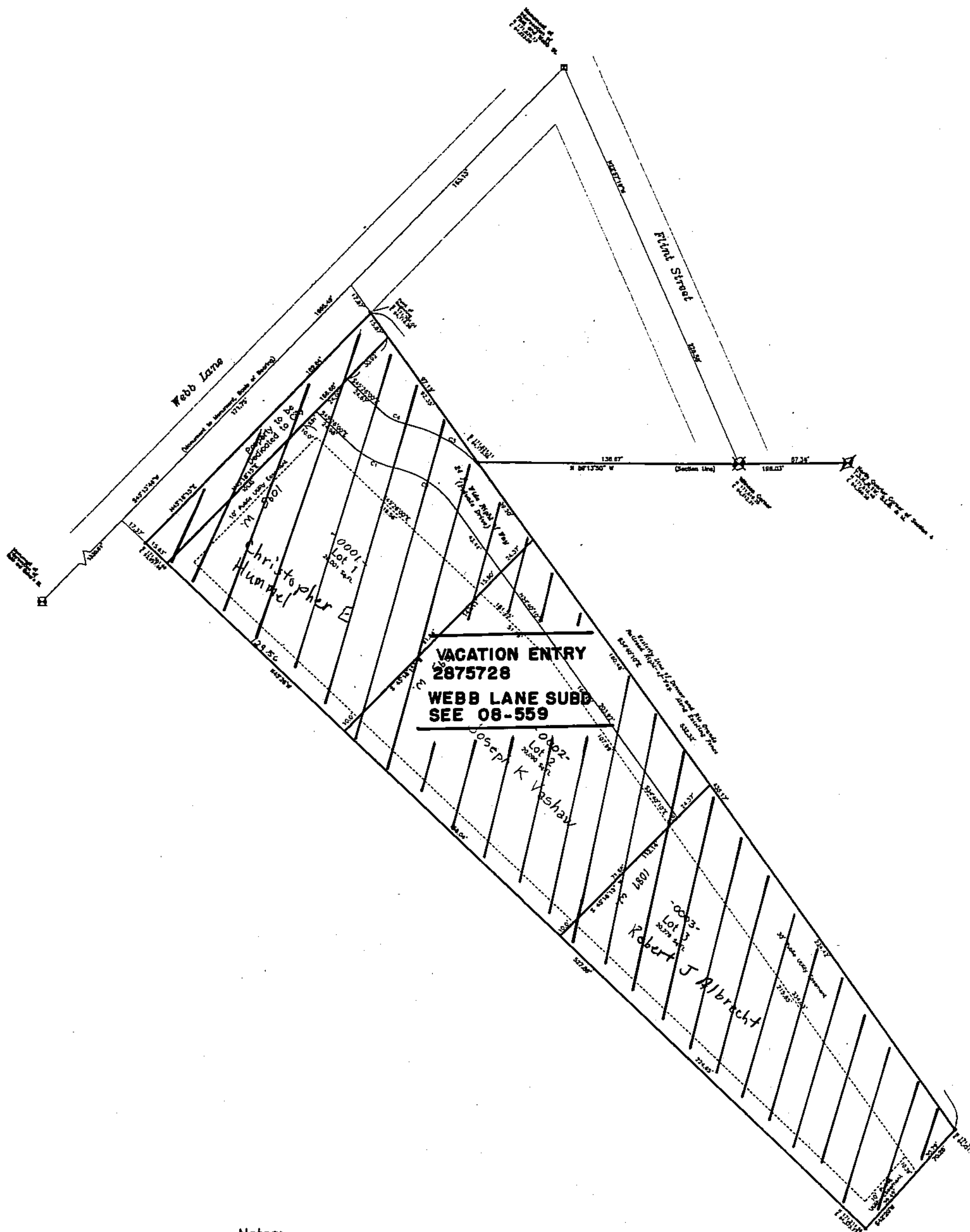
N 1/2 SEC. 4, T.3N., R.1W
 SW 1/4 SEC. 33, T.4N., R. 1W

S.L.M. DAVIS COUNTY, UTAH

FILE # 4756
 R 12-21-07

434

08



Notes:

- All Coordinates are Based on Davis County Surveyor's Office Datum.
- All Lots are 90 Ft. Wide at the 30 Ft. Setback Line.

Curve Table

CURVE	RADIUS	DELTA ANGLE	ARC LENGTH	CHORD LENGTH	CHORD BEARING
C1	50.00'	31°45'46"	27.72'	27.36'	N 81°18'53" W
C2	50.00'	42°31'31"	37.11'	36.26'	S 55°56'00" E
C3	74.00'	42°31'31"	54.92'	53.67'	S 55°56'00" E
C4	28.00'	31°45'46"	14.41'	14.23'	N 81°18'53" W

Ballinger
 Engineering