

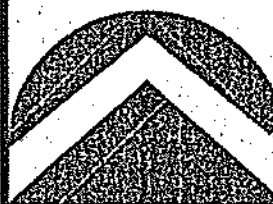
RICHTER FARM SUBDIVISION

PART OF THE NW QUARTER AND THE SW QUARTER OF SECTION 10
TOWNSHIP 3 NORTH, RANGE 1 WEST
SALT LAKE BASE AND MERIDIAN
KAYSVILLE CITY, DAVIS COUNTY, UTAH

PREFIX #
08-405

LAST #
0003

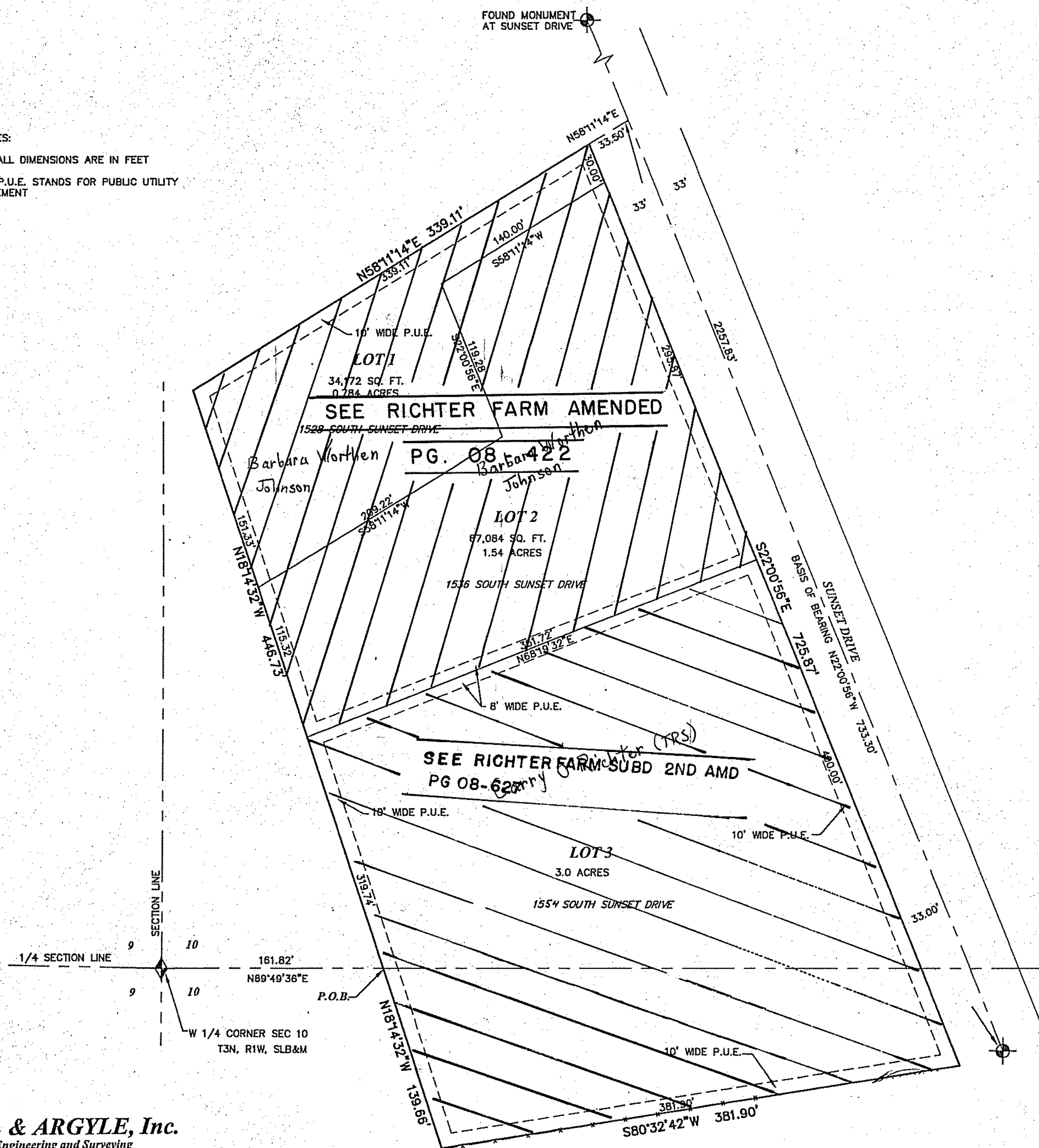
N



SCALE:
1" = 100'

NOTES:

1. ALL DIMENSIONS ARE IN FEET
2. P.U.E. STANDS FOR PUBLIC UTILITY EASEMENT



DEVELOPMENT: RICHTER FARM SUBDIVISION
CITY: KAYSVILLE LOTS: 1 THRU 3

NW 1/4 SEC. 10, T.3N, R.1W
SW 1/4 SEC. 10, T.3N, R.1W
S.L.M. DAVIS COUNTY, UTAH
FILE # 4515
R 08-31-06

H & A HILL & ARGYLE, Inc.
Engineering and Surveying
181 North 200 West, Suite #4, Bountiful, Utah 84010
(801) 298-2236 Phone, (801) 298-5983 Fax

405

08