

DANCING HORSE ESTATES SUBDIVISION

KAYSVILLE

Tax ID Prefix

08-397

Plat ID: 4454

Sheet 1 of 1

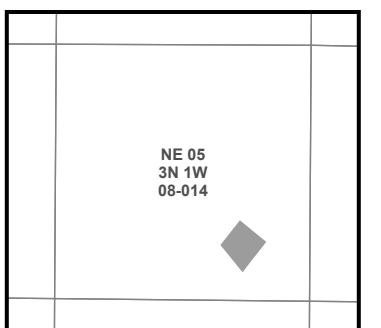
Year Recorded: 2006



Parcel ID

Lot Number

1 inch = 50 feet



NOTE: Distance, bearings and radius values are approximate. User needs to refer to the recorded legal descriptions for exact bearing and distances. For cadastral or technical information, see the dedicated plat and or legal descriptions in recorded documents.

