

# CR ESTATES SUBDIVISION, PHASE 2

AMENDING LOT 2, CR ESTATES SUBDIVISION  
A PART OF THE SOUTHWEST 1/4  
OF SECTION 14, T3N, R1W, SLB&M.  
FARMINGTON CITY, DAVIS COUNTY, UTAH

PREF IX  
08-396

LAST #  
0202

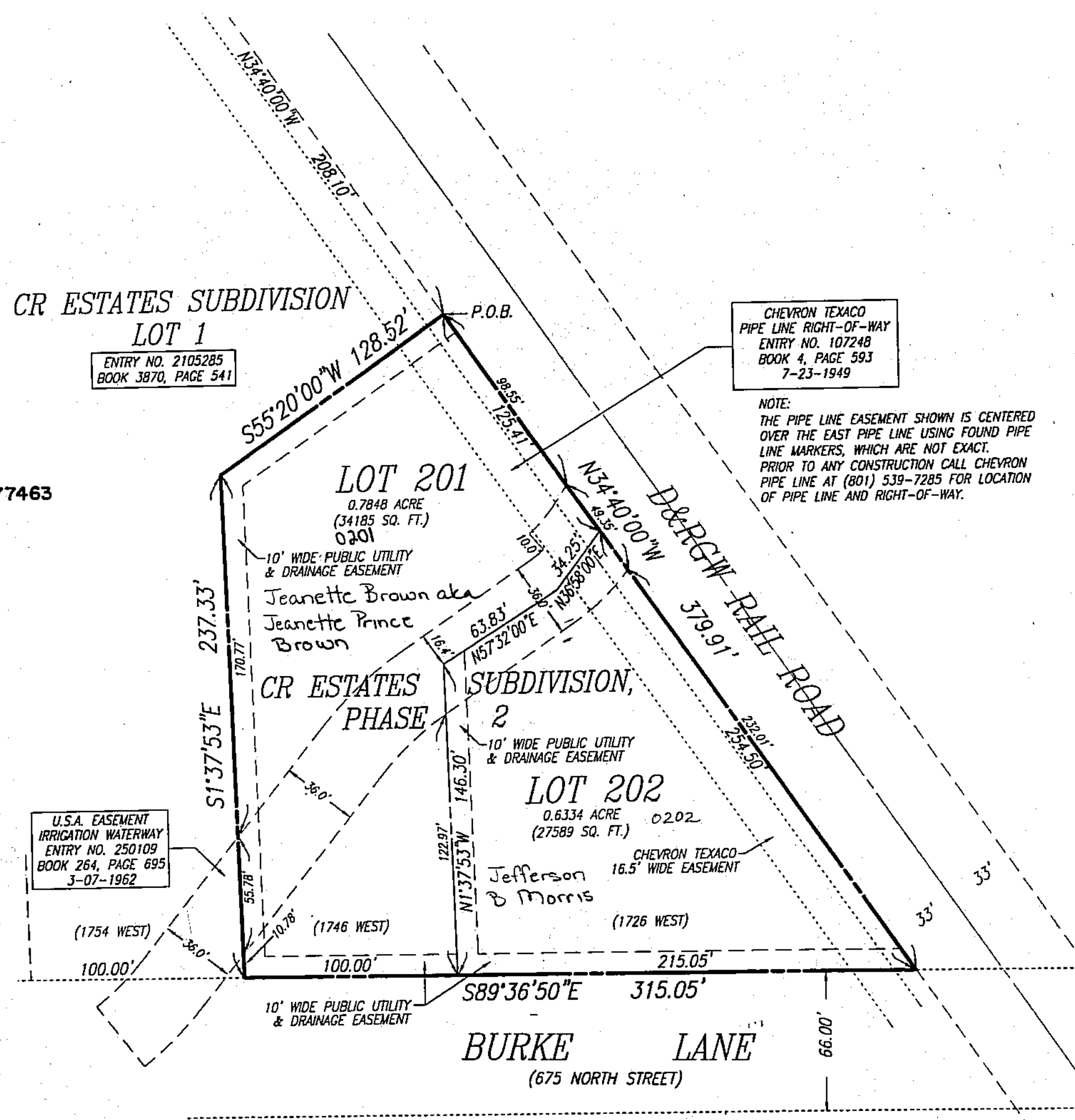
N



SCALE:  
1" = 50'

396

08



CHEVRON TEXACO  
PIPE LINE RIGHT-OF-WAY  
ENTRY NO. 107248  
BOOK 4, PAGE 593  
7-23-1949

NOTE:  
THE PIPE LINE EASEMENT SHOWN IS CENTERED  
OVER THE EAST PIPE LINE USING FOUND PIPE  
LINE MARKERS, WHICH ARE NOT EXACT.  
PRIOR TO ANY CONSTRUCTION CALL CHEVRON  
PIPE LINE AT (801) 539-7285 FOR LOCATION  
OF PIPE LINE AND RIGHT-OF-WAY.

ENTRY NO. 2105285  
BOOK 3870, PAGE 541

U.S.A. EASEMENT  
IRRIGATION WATERWAY  
ENTRY NO. 250109  
BOOK 264, PAGE 695  
3-07-1962

EASEMENT ENTRY 2777463

DEVELOPMENT: CR ESTATES SUBD. PH. 2  
CITY: FARMINGTON LOTS: 201 THRU 202

SW 1/4 SEC. 14, T.3N, R.1W  
LOT 2 CR ESTATES  
S.L.M. DAVIS COUNTY, UTAH