

ART'S CLUSTER SUBDIVISION

AMENDED

AMENDING LOTS 12 AND 13 OF ART'S CLUSTER SUBDIVISION BEING PART OF THE SOUTHWEST 1/4 OF SECTION 4 AND THE SE QUARTER OF SECTION 5 TOWNSHIP 3 NORTH, RANGE 1 WEST, SLB&M KAYSVILLE CITY, DAVIS COUNTY UTAH

PREFIX 08-393

LAST # 0013

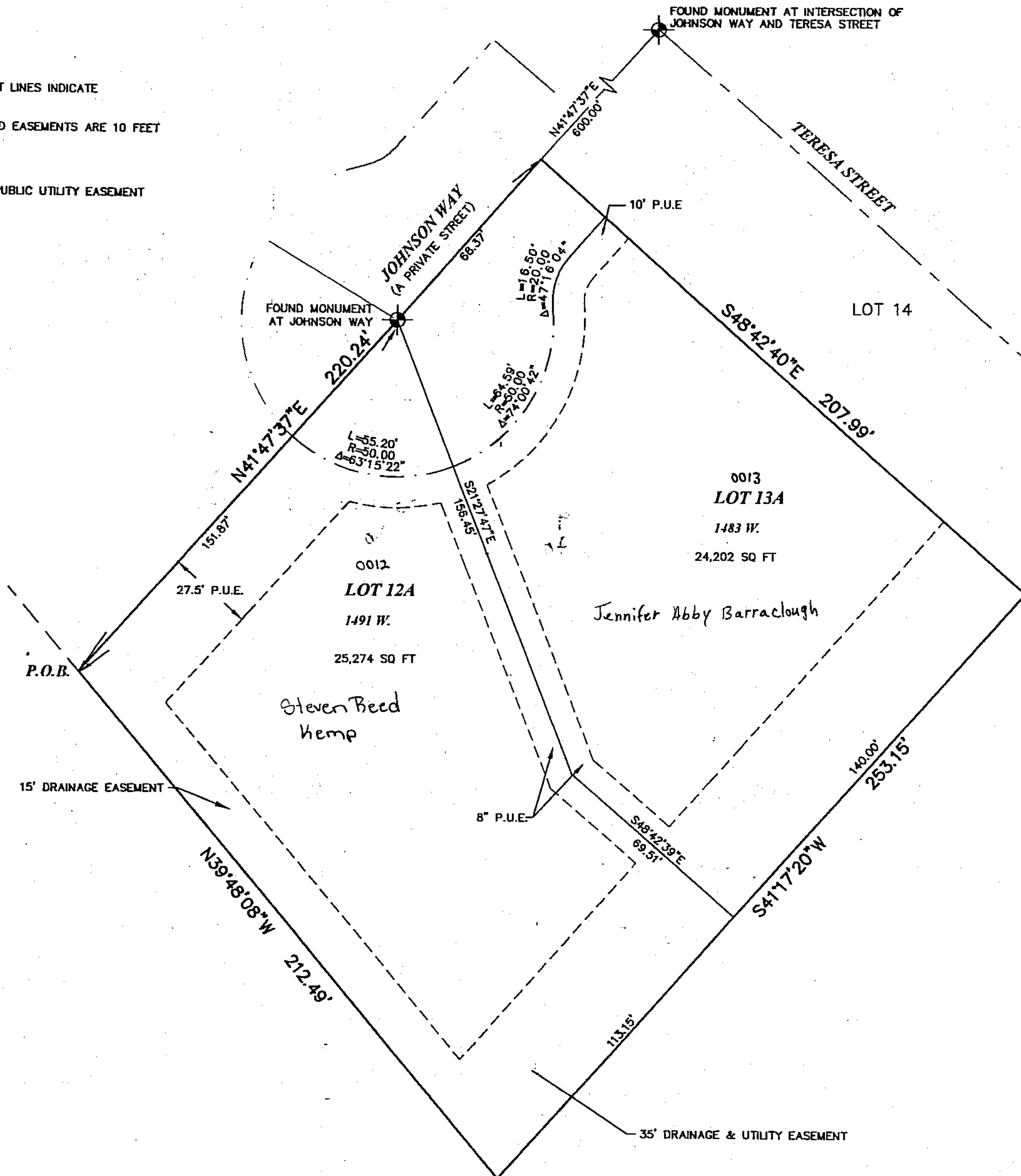
N



SCALE: 1" = 30'

NOTES:

- 1. DASHED LINES PARALLEL TO LOT LINES INDICATE PUBLIC UTILITY EASEMENTS
- 2. ALL FRONT, REAR AND SIDYARD EASEMENTS ARE 10 FEET UNLESS OTHERWISE INDICATED.
- 3. ALL DIMENSIONS ARE IN FEET
- 4. A PRIVATE STREET IS ALSO A PUBLIC UTILITY EASEMENT



DEVELOPMENT: ART'S CLUSTER SUBD. AMENDED

CITY: KAYSVILLE LOTS: 12A THRU 13A

SW 1/4 SEC. 4, T.3N, R.1W
SE 1/4 SEC. 5, T.3N, R.1W
LOTS 12 & 13 ART'S CLUSTER SUBD.
S.L.M. DAVIS COUNTY, UTAH

FILE #4432
R 04-06-06

393

08