

377  
08

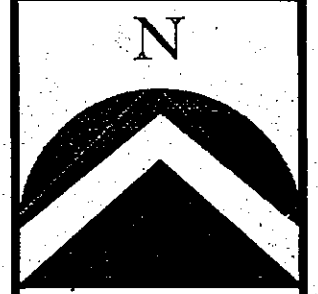
**BYRON OLSEN SUBDIVISION**  
LOCATED IN THE NORTHEAST QUARTER OF SECTION 13,  
TOWNSHIP 3 NORTH, RANGE 1 WEST  
SALT LAKE BASE AND MERIDIAN  
FARMINGTON CITY, DAVIS COUNTY, UTAH

ROSS J. FERRIN  
08-052-0097

NORTHEAST  
CORNER OF  
SECTION 13,  
T.3N., R.1W.,  
S.L.B. & M.  
(NOT FOUND)

PREFIX  
08-377

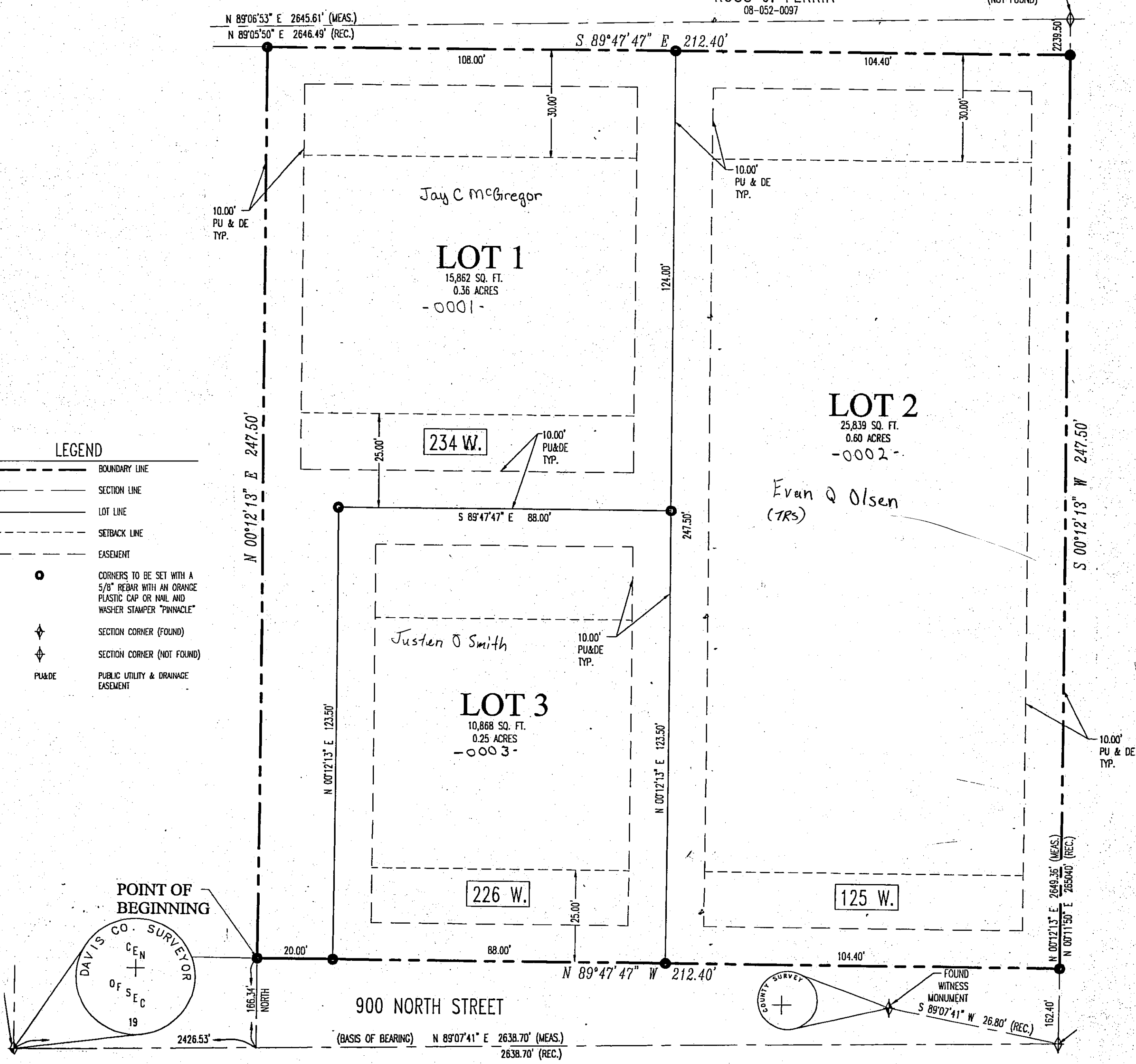
LAST #  
0003



SCALE:  
1" = 20'

**LEGEND**

|  |  |
|--|--|
|  | BOUNDARY LINE  |
|  | SECTION LINE   |
|  | LOT LINE   |
|  | SETBACK LINE   |
|  | EASEMENT   |
|  | CORNERS TO BE SET WITH A 5/8" REBAR WITH AN ORANGE PLASTIC CAP OR NAIL AND WASHER STAMPER "PINNACLE" |
|  | SECTION CORNER (FOUND)   |
|  | SECTION CORNER (NOT FOUND)   |
|  | PUBLIC UTILITY & DRAINAGE EASEMENT   |



DEVELOPMENT: BYRON OLSEN SUBD.  
CITY: FARMINGTON LOTS: 1 THRU 3

NE 1/4 13, T.3N, R.1W  
S.L.M. DAVIS COUNTY, UTAH

STEPHEN J. FACKRELL  
DATE OF SURVEY: 10/01/04

**PINNACLE**  
Engineering & Land Surveying, Inc.

1513 North Hillfield Rd., Suite #2 Layton, UT 84041 Phone: (801) 866-0676 Fax: (801) 866-0678

FILE # 4369  
R 11-28-05