

KAYSVILLE SUNSET FARMS SUBDIVISION PHASE I

A SUBDIVISION LOCATED IN THE NORTHWEST QUARTER OF SECTION 10, TOWNSHIP 3 NORTH, RANGE 1 WEST,
AND THE NORTHEAST QUARTER OF SECTION 9, TOWNSHIP 3 NORTH, RANGE 1 WEST,
SALT LAKE BASE AND MERIDIAN
KAYSVILLE CITY, DAVIS CO., UTAH

PREFIX 6
08-375

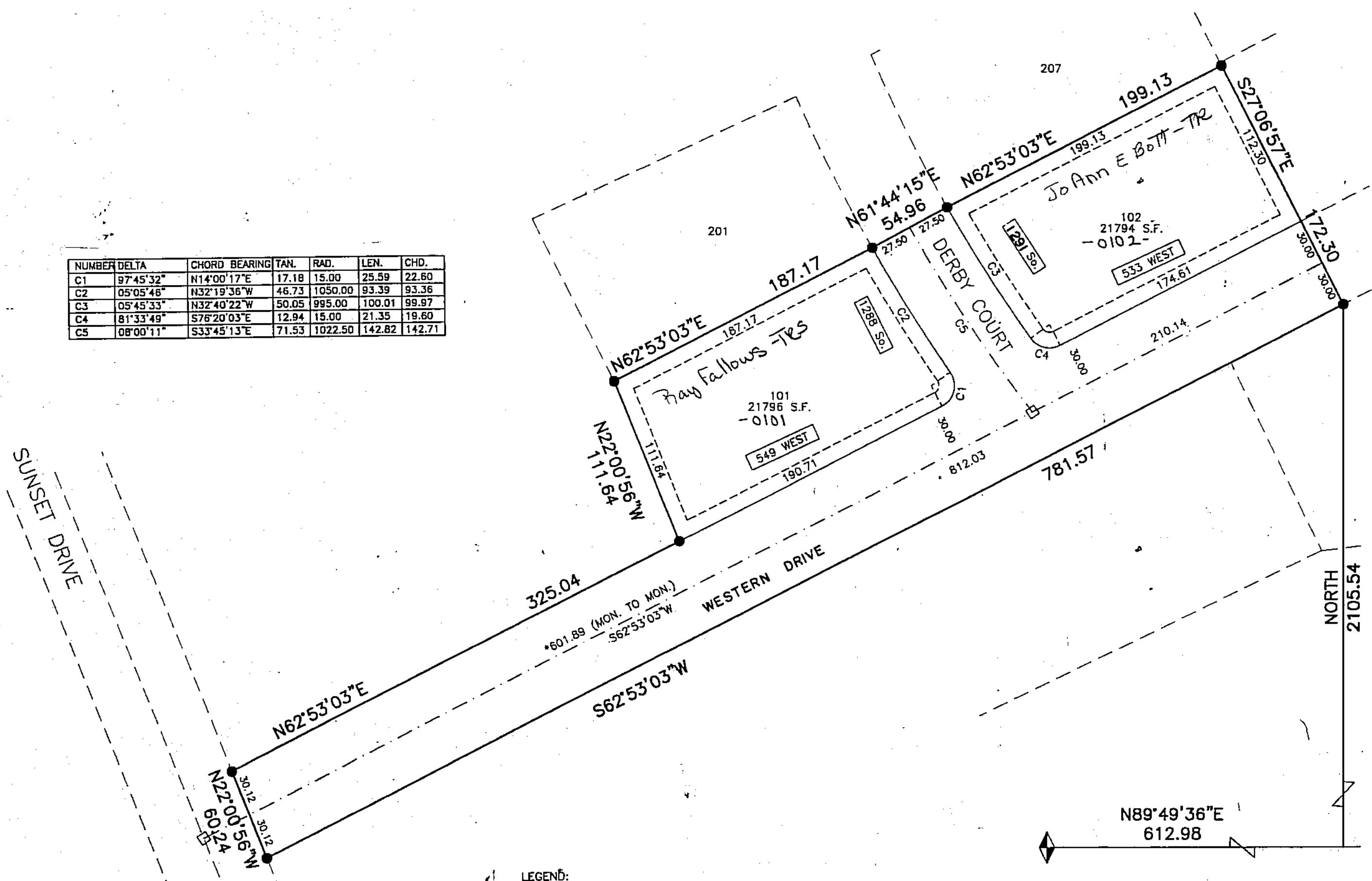
LAST #
0102



SCALE:
1" = 60'

Woodside Sunset Farms LLC
Owns All Lots Not Marked

NUMBER	DELTA	CHORD BEARING	TAN.	RAD.	LEN.	CHD.
C1	97°45'32"	N14°00'17"E	17.18	15.00	25.59	22.60
C2	05°05'46"	N32°19'36"W	46.73	1050.00	93.39	93.36
C3	05°45'33"	N32°40'22"W	50.05	995.00	100.01	99.87
C4	81°33'49"	S76°20'03"E	12.94	15.00	21.35	19.60
C5	08°00'11"	S33°45'13"E	71.53	1022.50	142.82	142.71



LEGEND:
 □ MONUMENTS TO BE SET
 - - - P.U. & DRAINAGE EASEMENTS
 FRONT LOT LINE EASEMENT IS 10.00 FEET
 BOUNDARY EASEMENTS ARE 10.00 FEET
 INTERIOR LOT LINE EASEMENT IS 7.5 FEET
 1/2" X 24" REBAR OR PLUG IN CURB TO BE SET ON ALL INTERIOR LOT CORNERS
 5/8" X 24" REBAR TO BE SET ON ALL OUTSIDE BOUNDARY CORNERS

WEST QUARTER CORNER
SECTION 10
T.3N., R.1W.,
S.L.B.&M.
FOUND BRASS CAP MON.

DEVELOPMENT: KAYSVILLE SUNSET FARMS SUBD., PH. 1
CITY: KAYSVILLE LOTS: 101 THRU 102

NW 1/4 10, T.3N, R.1W
NE 1/4 9, T.3N, R.1W
S.L.M. DAVIS COUNTY, UTAH

PLAT PREPARED BY:
R G RALPH GOFF AND ASSOCIATES
CONSULTING ENGINEERS
A 116 EAST VINE STREET - MURRAY, UTAH 84107
(801) 288-8733

FILE # 4364
R 11-14-05

375

08