

CORNERSTONE SUBDIVISION AMENDED

AMENDING LOTS 13,14,15, AND 16 OF CORNERSTONE SUBDIVISION
 LOCATED IN THE NORTHWEST QUARTER
 OF SECTION 12
 TOWNSHIP 3 NORTH, RANGE 1 WEST
 SALT LAKE BASE AND MERIDIAN
 FARMINGTON CITY, DAVIS COUNTY, UTAH

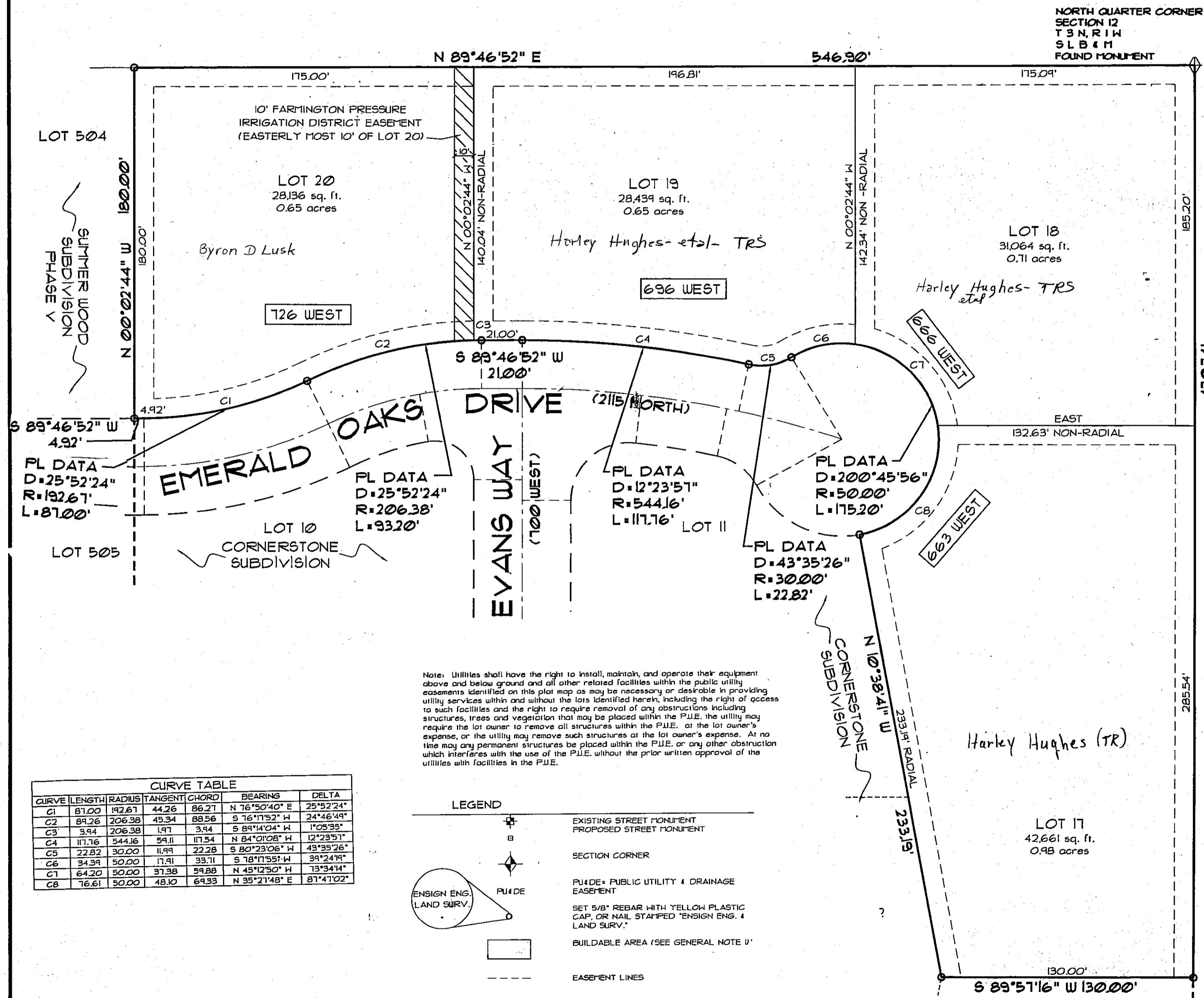
PREFIX
08-372

LAST #
0020

N



SCALE:
1" = 40'



LOT 504
SUMMER WOOD SUBDIVISION PHASE V

LOT 20
28,136 sq. ft.
0.65 acres
Byron D Lusk

LOT 19
28,439 sq. ft.
0.65 acres
Harley Hughes- et al- TRS

LOT 18
31,064 sq. ft.
0.71 acres
Harley Hughes- TRS

LOT 505
CORNERSTONE SUBDIVISION

LOT 10
CORNERSTONE SUBDIVISION

LOT 11

Harley Hughes (TR)

LOT 17
42,661 sq. ft.
0.98 acres

ENSIGN
 ENGINEERING & SURVEYING

1558 West 700 North, Suite 5
Layton, Utah 84041
 (801) 547-1100
 Fax (801) 553-4315

90 East Fort Union Blvd., Suite 100
Midvale, Utah 84047
 (801) 255-0529
 Fax (801) 255-4446

DEVELOPMENT: CORNERSTONE SUBD. AMENDED

CITY: FARMINGTON LOTS: 17 THRU 20

NW 1/4 12, T.3N, R.1W

S.L.M. DAVIS COUNTY, UTAH

FILE # 4343
R 10-18-05

372

808