

# FARMINGTON CROSSING ON SPRING CREEK POND PHASE 3, A PUD

Tax ID Prefix

**08-366**

Plat ID: 4287

Sheet 1 of 3

Year Recorded: 2005



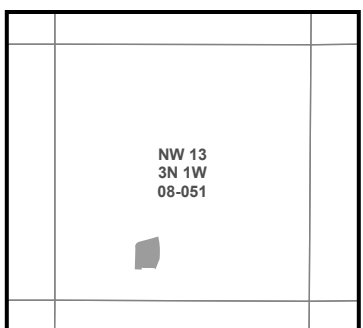
FARMINGTON CROSSING NORTH  
08-413  
4581



**Parcel ID**

**Lot Number**

1 inch = 30 feet



NOTE: Distance, bearings and radius values are approximate. User needs to refer to the recorded legal descriptions for exact bearing and distances. For cadastral or technical information, see the dedicated plat and/or legal descriptions in recorded documents.



# FARMINGTON CROSSING ON SPRING CREEK POND PHASE 3, A PUD

## FARMINGTON

Tax ID Prefix

**08-366**

Plat ID: 4287

Sheet 2 of 3

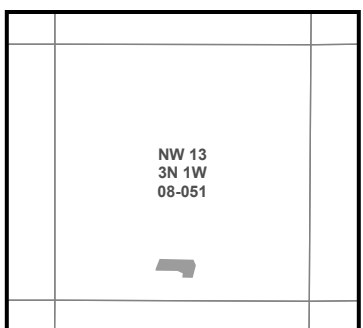
Year Recorded: 2005



**Parcel ID**

**Lot Number**

1 inch = 30 feet



SLB & M

NOTE: Distance, bearings and radius values are approximate. User needs to refer to the recorded legal descriptions for exact bearing and distances. For cadastral or technical information, see the dedicated plat and or legal descriptions in recorded documents.



# FARMINGTON CROSSING ON SPRING CREEK POND PHASE 3, A PUD

## FARMINGTON

Tax ID Prefix

**08-366**

Plat ID: 4287

Sheet 3 of 3

Year Recorded: 2005



**Parcel ID**

**Lot Number**

1 inch = 30 feet

NE 14 3N 1W 08-058	NW 13 3N 1W 08-051	NE 13 3N 1W 08-052
SE 14 3N 1W 08-060	SW 13 3N 1W 08-053	SE 13 3N 1W 08-054

S L B & M

NOTE: Distance, bearings and radius values are approximate. User needs to refer to the recorded legal descriptions for exact bearing and distances. For cadastral or technical information, see the dedicated plat and/or legal descriptions in recorded documents.

