

MEADOW CREEK SUBDIVISION

LOCATED IN THE NORTHWEST QUARTER OF SECTION 14 AND THE NORTHEAST QUARTER OF SECTION 15,
TOWNSHIP 3 NORTH, RANGE 1 WEST, SALT LAKE BASE & MERIDIAN
KAYSVILLE CITY, DAVIS COUNTY, UTAH


PREFIX
08-333

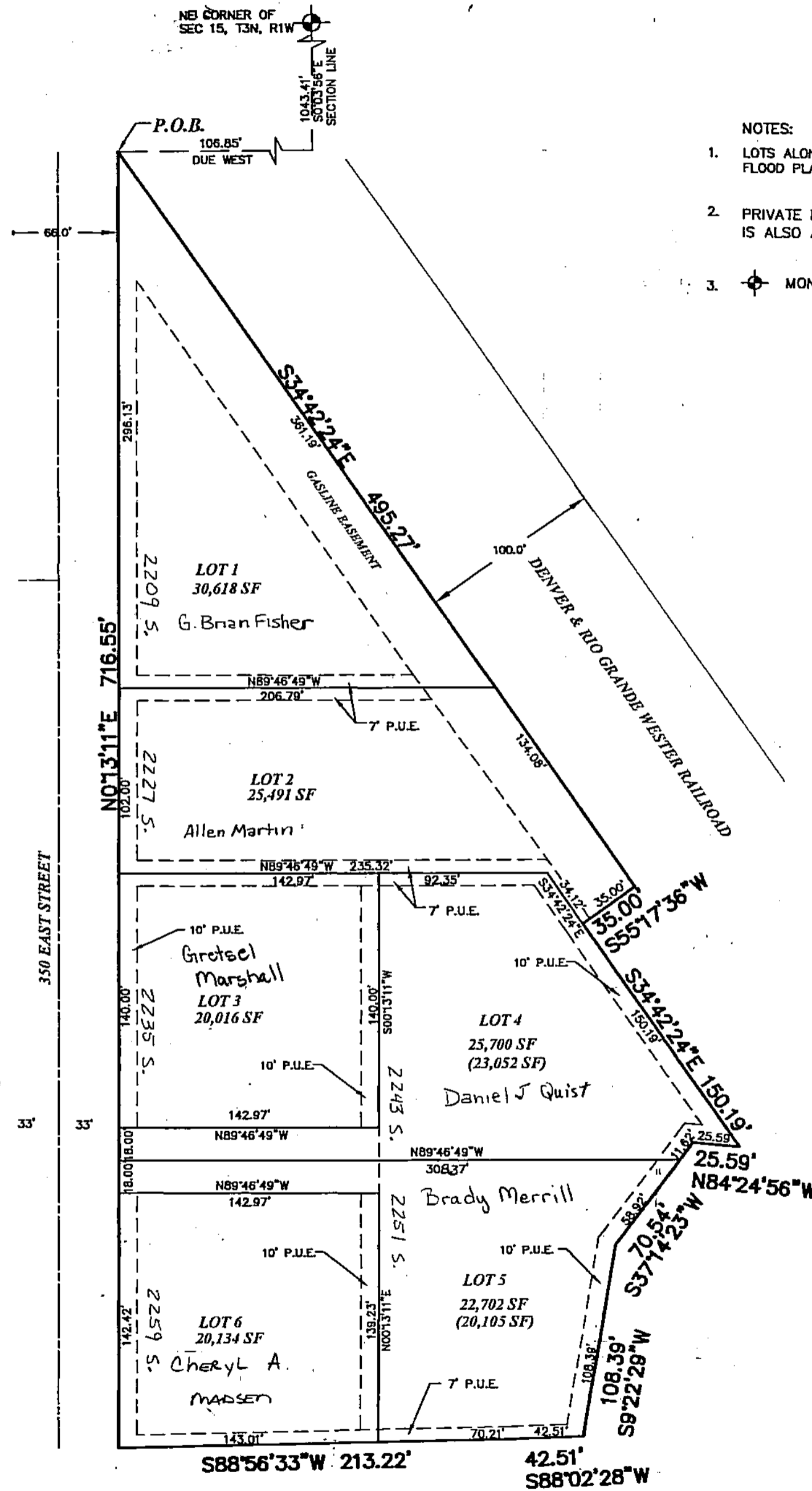
LAST #
0006

N

SCALE:
1" = 60'

NOTES:

1. LOTS ALONG THE WATERWAY MAY BE IN A FLOOD PLAIN
2. PRIVATE DRIVE ACCESS TO LOTS 4 AND 5 IS ALSO A PUBLIC UTILITY EASEMENT
3.  MONUMENTS TO BE SET



DEVELOPMENT: MEADOW CREEK
CITY: KAYSVILLE LOTS: 1 THRU 6

NE 1/4 15, T 3N, R 1W
NW 1/4 14, T 3N, R 1W
S.L.M. DAVIS COUNTY, UTAH

333

08