

# Zundel Subdivision

Being A Part Of The Southeast Quarter Of Section 12,  
Township 3 North, Range 1 West Salt Lake Base and Meridian  
Farmington City, Davis County, Utah

PREFIX  
08-321

LAST #  
0002

N

SCALE:

1" = 50'

## Narrative:

### PURPOSE OF SURVEY

To locate the property corners and subdivide the property into two lots for the owner.

### BASIS OF ESTABLISHMENT

Our instrument was set on the existing brass monument at the point of tangency of the centerline of Grand View Court. The existing brass monument at the bend point of the centerline on Grand View Court was sited as our Basis of Bearing. From this point all other property corners were radially located and rebar with surveyor's caps were set.

### FOUND MONUMENTS

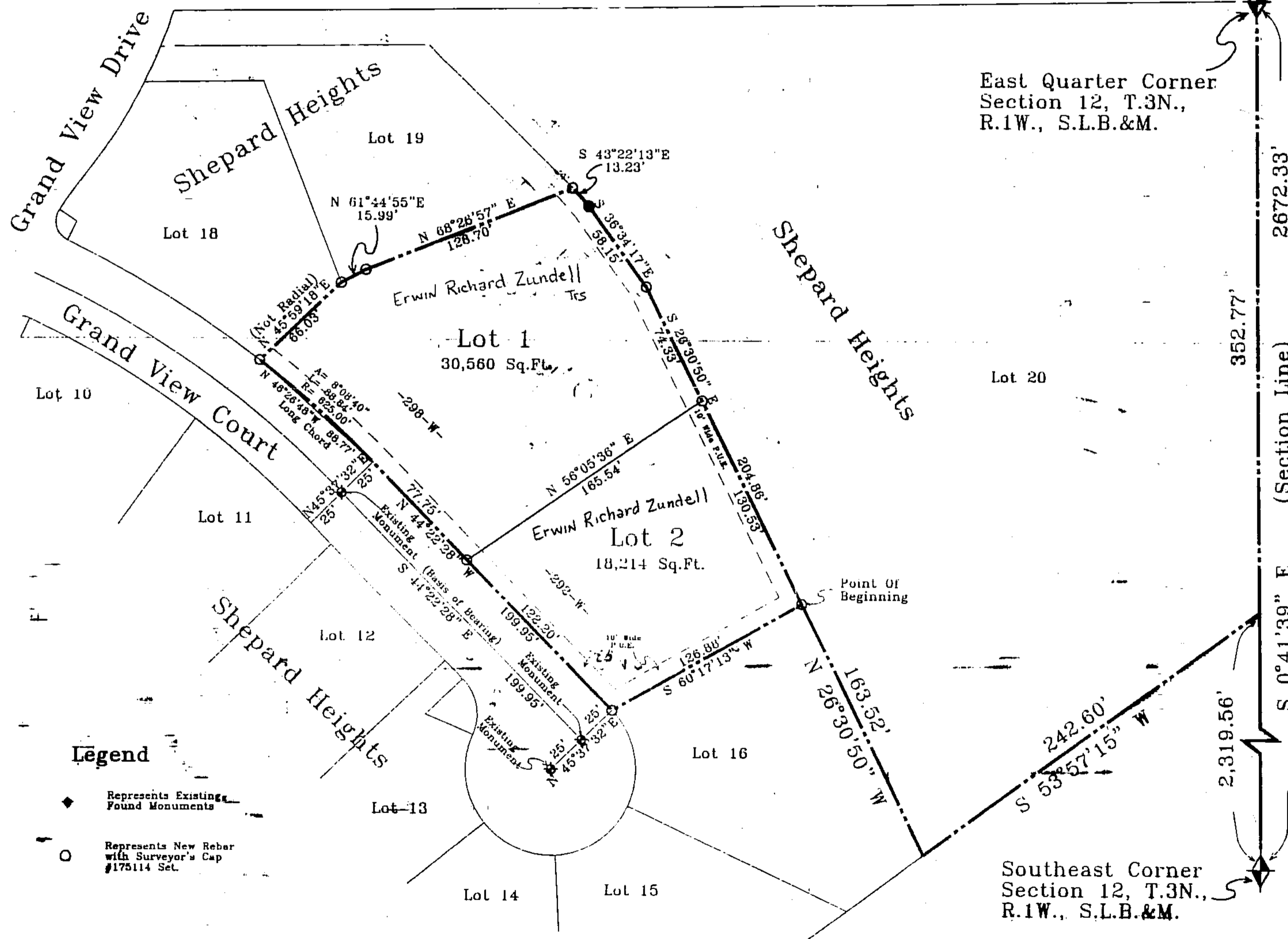
Existing brass monuments were found on the centerline of Grand View Court at the point of tangency and the bend point. The existing brass monument at the radius point of Grand View Court was also found.

Northeast Corner  
Section 12, T.3N.,  
R.1W., S.L.B.&M.

S 0°14'09" E  
2,607.48'  
(Section Line)

East Quarter Corner  
Section 12, T.3N.,  
R.1W., S.L.B.&M.

Southeast Corner  
Section 12, T.3N.,  
R.1W., S.L.B.&M.



## Legend

- ◆ Represents Existing Found Monuments
- Represents New Rebar with Surveyor's Cap #175114 Set



Balling  
Engineering

DEVELOPMENT: ZUNDEL SUBDIVISION  
CITY: FARMINGTON LOTS: 1 THRU 2

SE 1/4 12, T.3N., R.1W  
S.L.M. DAVIS COUNTY, UTAH

FILE # 3981  
R 02-24-04

321

08