

OAKRIDGE PLACE, LOTS 7 & 8 AMENDED

AN AMENDED PLAT OF A PORTION OF OAKRIDGE PLACE SUBDIVISION
 LOCATED IN THE NORTHEAST QUARTER OF SECTION 14 AND THE NORTHWEST QUARTER OF SECTION 13
 ALL IN TOWNSHIP 3 NORTH, RANGE 1 WEST, SALT LAKE BASE AND MERIDIAN,
 FARMINGTON CITY, DAVIS COUNTY, UTAH

PREFIX
08-305

LAST #
0201

N

SCALE:
1" = 40'

DEVELOPMENT: OAKRIDGE PLACE LOTS 7 & 8 AMD

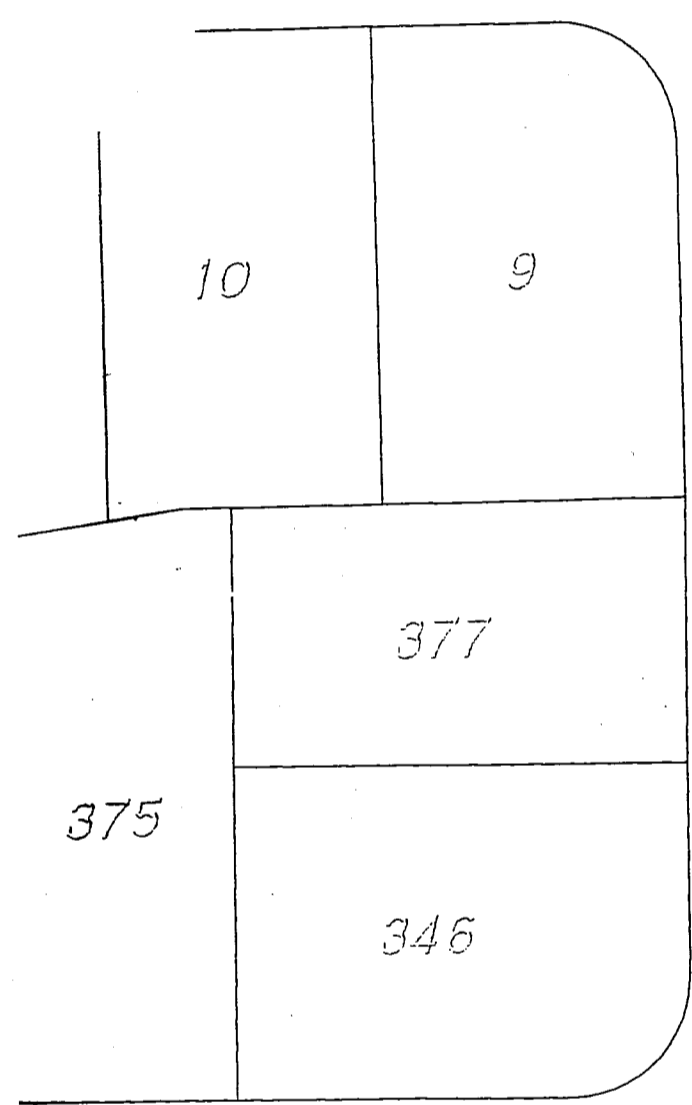
CITY: FARMINGTON LOTS: 201

NE 1/4 SEC. 14, T. 3N, R. 1W
 NW 1/4 SEC. 13, T. 3N, R. 1W
 S.L.M. DAVIS COUNTY, UTAH

FILE # 3800
R 2-14-03

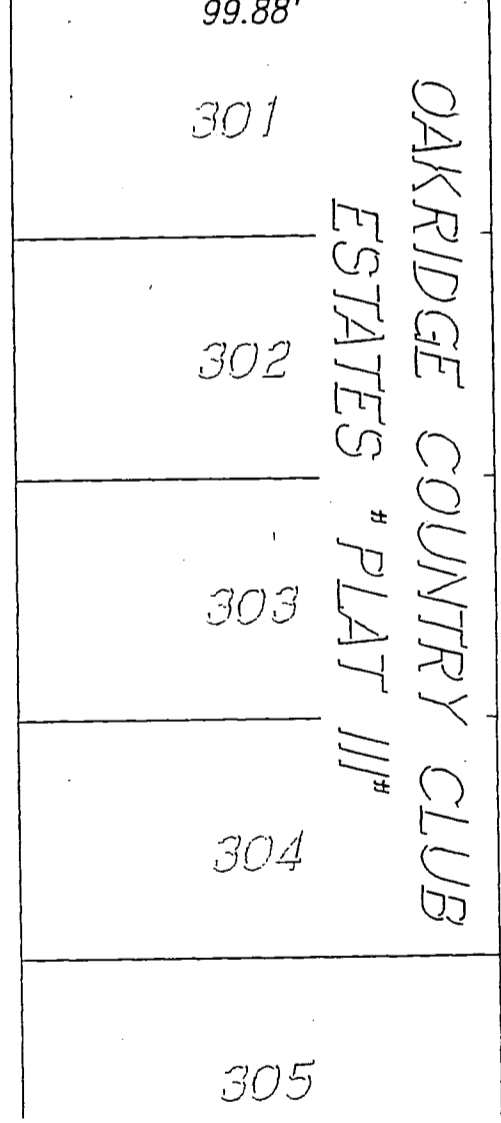
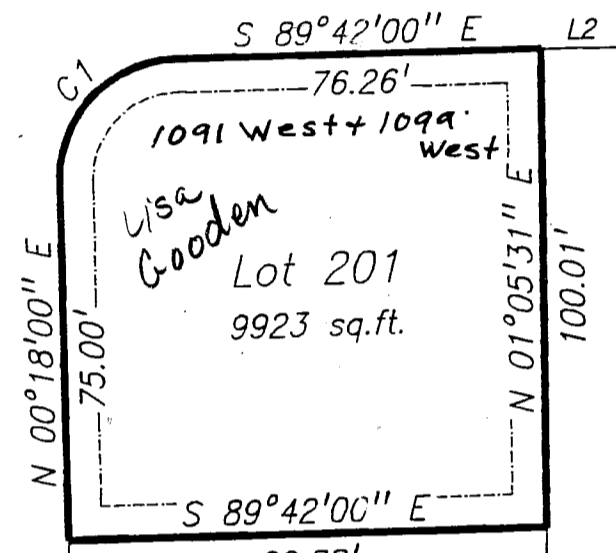
EAST 55.00'
 SOUTH 403.54'
 NE CORNER SECTION 14
 T.3N, R.1W, S.L.B.&M.

SHEPARD LANE



1185 NORTH STREET

1100 WEST STREET



OAKRIDGE COUNTRY CLUB
 ESTATES # PLAT III

Line	Direction	Distance
L1	S 07°36'01" W	66.54
L2	N 89°42'00" W	17.43

Curve	Length	Radius	Delta	Tangent	Chord Dir.	Chord
C1	39.27	25.00	90°00'00"	25.00	S 45°18'00" W	35.36

NOTES:

1. ALL COURSES SHOWN IN PARENTHESIS ARE RECORD INFORMATION TAKEN FROM DEED DESCRIPTIONS OR OFFICIAL MAPS OF RECORD.
2. ALL UTILITY LOCATIONS SHOWN HEREON ARE APPROXIMATE ONLY AND ARE TO BE VERIFIED PRIOR TO CONSTRUCTION.
3. 7 FOOT PUBLIC UTILITY AND DRAINAGE EASEMENT ON ALL FRONT AND REAR LOT LINES.

THOMPSON-HYSELL ENGINEERS, INC.
 980 W. LEVOY DRIVE, TAYLORSVILLE, UTAH 84128 (801)743-0886 FAX: (801)743-0887