

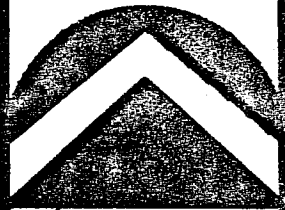
RIGBY SUBDIVISION

PART OF THE NORTHEAST QUARTER OF SECTION 4, T.3N., R.1W., S.L.B.&M., U.S. SURVEY
 KAYSVILLE CITY, DAVIS COUNTY, UTAH
 MAY, 2001

PREFIX
 08-287


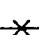


LAST #

N



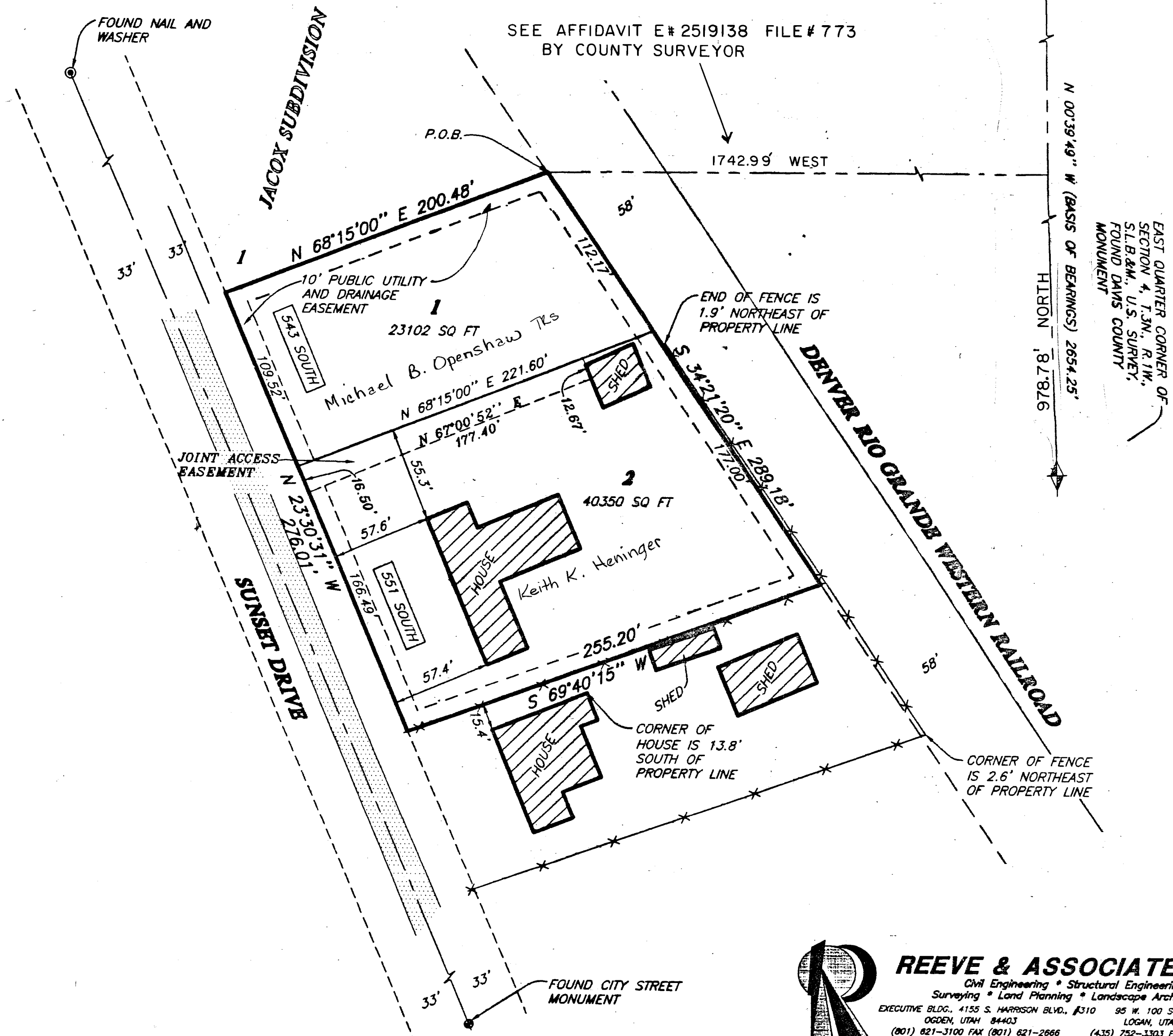
SCALE:
 1" = 50'

Legend

-  = SECTION CORNER
-  = EXISTING FENCE
-  = EXISTING PAVEMENT
-  = EXISTING BUILDING

NORTHEAST CORNER OF
 SECTION 4, T.3N., R.1W.,
 S.L.B.&M., U.S. SURVEY,
 FOUND DAVIS COUNTY
 MONUMENT

SEE AFFIDAVIT E# 2519138 FILE # 773
 BY COUNTY SURVEYOR



DEVELOPMENT: RIGBY SUBDIVISION

CITY: KAYSVILLE LOTS: 1 & 2

NE 1/4 SEC. 4, T.3N, R. 1W

S.L.M. DAVIS COUNTY, UTAH

FILE # 3559

R 8-07-01



REEVE & ASSOCIATES, INC.

Civil Engineering * Structural Engineering
 Surveying * Land Planning * Landscape Architecture
 EXECUTIVE BLDG., 4155 S. HARRISON BLVD., #310 95 W. 100 So. STE. #310
 OGDEN, UTAH 84403 LOGAN, UTAH 84321
 (801) 821-3100 FAX (801) 621-2666 (435) 752-3303 FAX (435) 752-2266

08-287