

FARMINGTON RANCHES PHASE 2 SUBDIVISION

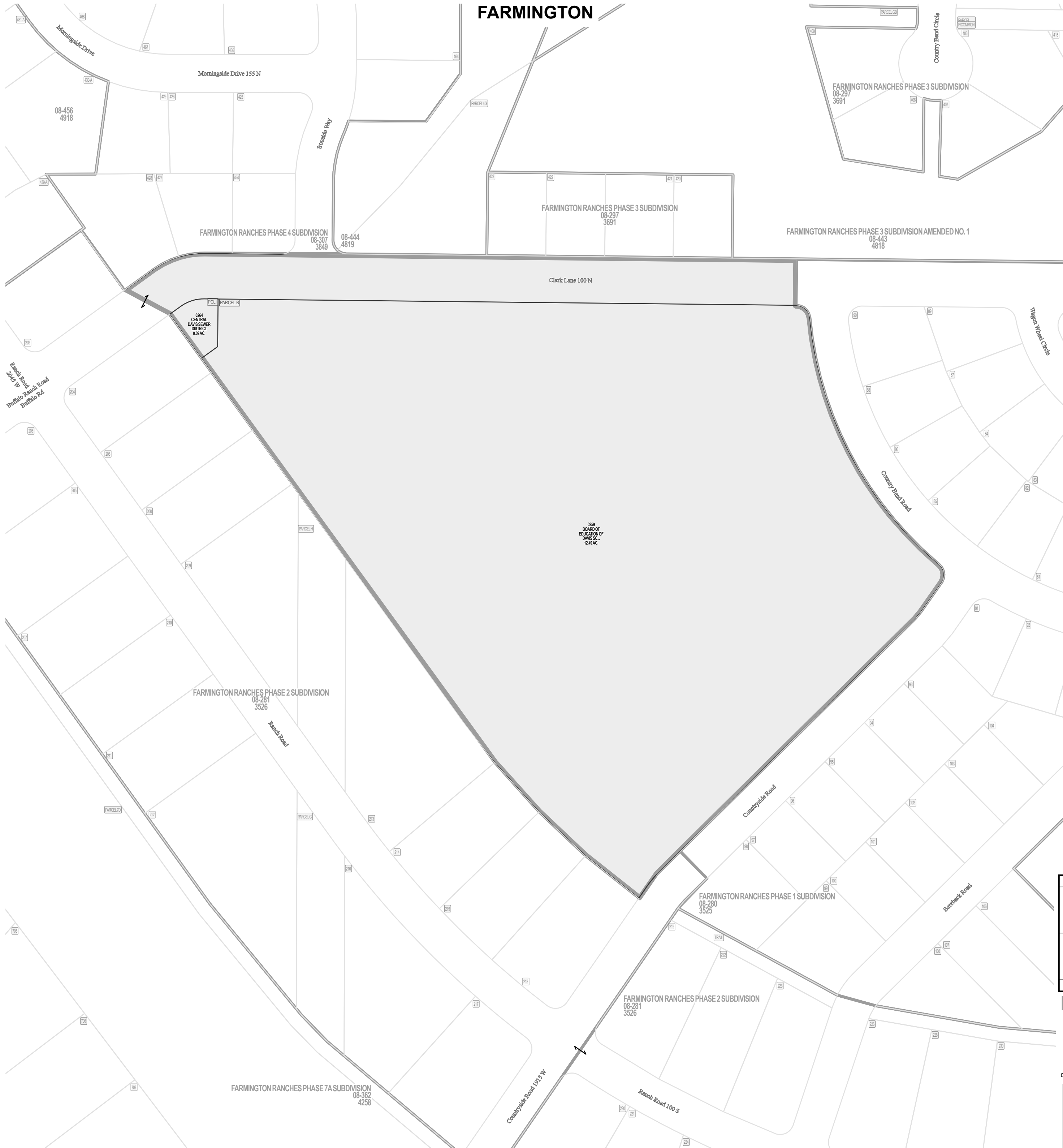
Tax ID Prefix

08-281

Plat ID: 3526

Sheet 1 of 4

Year Recorded: 2001



Parcel ID

Lot Number

1 inch = 100 feet

NE 22 3N 1W 08-069	NW 23 3N 1W 08-071
SE 22 3N 1W 08-070	SW 23 3N 1W 08-073

S L B & M

NOTE: Distance, bearings and radius values are approximate. User needs to refer to the recorded legal descriptions for exact bearing and distances. For cadastral or technical information, see the dedicated plat and or legal descriptions in recorded documents.



FARMINGTON RANCHES PHASE 2 SUBDIVISION

Tax ID Prefix

08-281

Plat ID: 3526

Sheet 2 of 4

Year Recorded: 2001



Parcel ID

Lot Number

1 inch = 100 feet

NE 22 3N 1W 08-069	NW 23 3N 1W 08-071
SE 22 3N 1W 08-070	SW 23 3N 1W 08-073

SLB & M

NOTE: Distance, bearings and radius values are approximate. User needs to refer to the recorded legal descriptions for exact bearing and distances. For cadastral or technical information, see the dedicated plat and or legal descriptions in recorded documents.



FARMINGTON RANCHES PHASE 2 SUBDIVISION

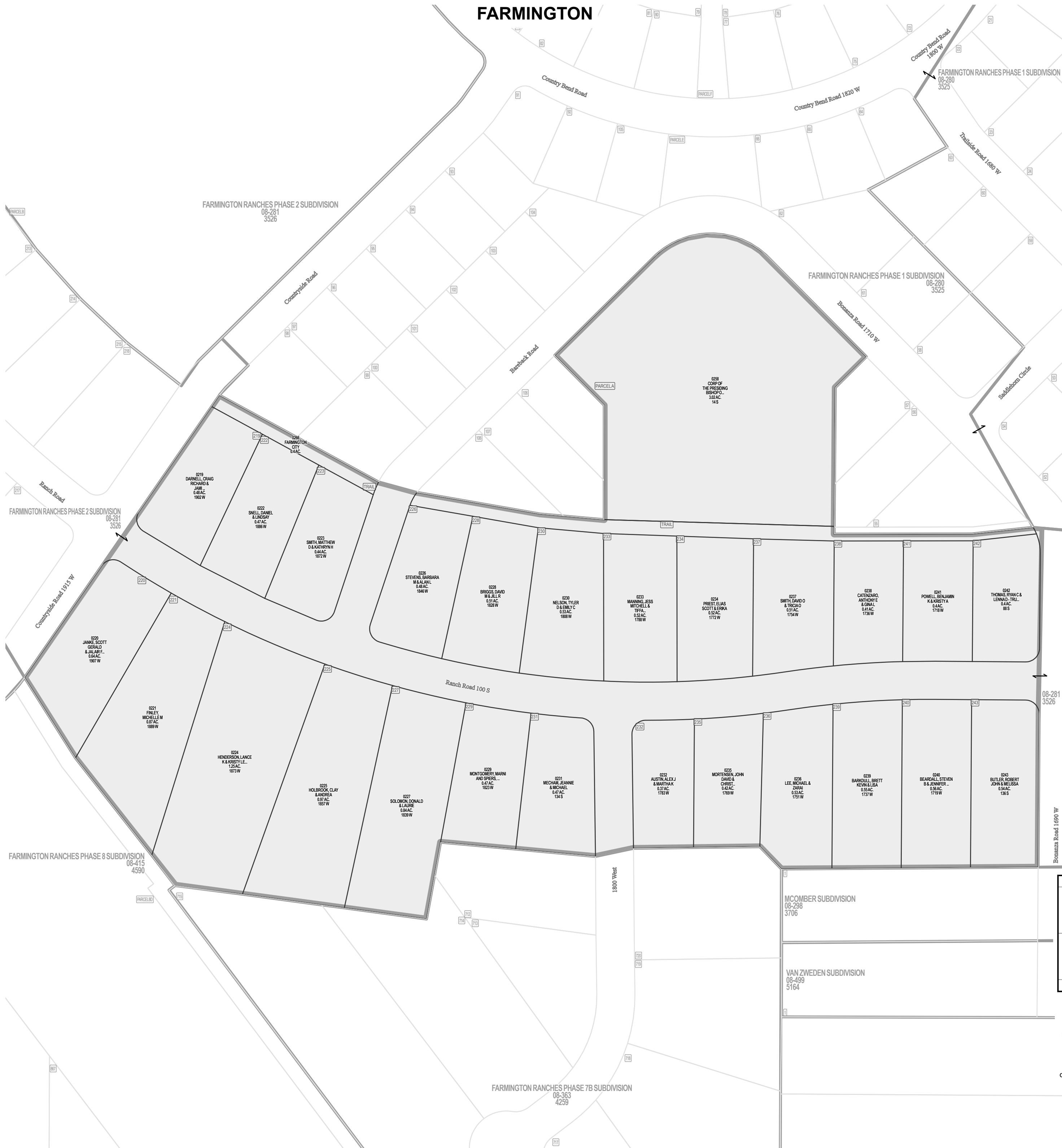
Tax ID Prefix

08-281

Plat ID: 3526

Sheet 3 of 4

Year Recorded: 2001



Parcel ID

Lot Number

1 inch = 100 feet

NE 22 3N 1W 08-069	NW 23 3N 1W 08-071	NE 23 3N 1W 08-072
SE 22 3N 1W 08-070	SW 23 3N 1W 08-073	SE 23 3N 1W 08-074

SLB & M

NOTE: Distance, bearings and radius values are approximate. User needs to refer to the recorded legal descriptions for exact bearing and distances. For cadastral or technical information, see the dedicated plat and/or legal descriptions in recorded documents.



FARMINGTON RANCHES PHASE 2 SUBDIVISION

Tax ID Prefix

08-281

Plat ID: 3526

Sheet 4 of 4

Year Recorded: 2001



1525 West



Parcel ID

Lot Number

1 inch = 80 feet

NW 23 3N 1W 08-071	NE 23 3N 1W 08-072
SW 23 3N 1W 08-073	SE 23 3N 1W 08-074

S L B & M

NOTE: Distance, bearings and radius values are approximate. User needs to refer to the recorded legal descriptions for exact bearing and distances. For cadastral or technical information, see the dedicated plat and or legal descriptions in recorded documents.

