

# GABES ACRES PHASE 5

## KAYSVILLE

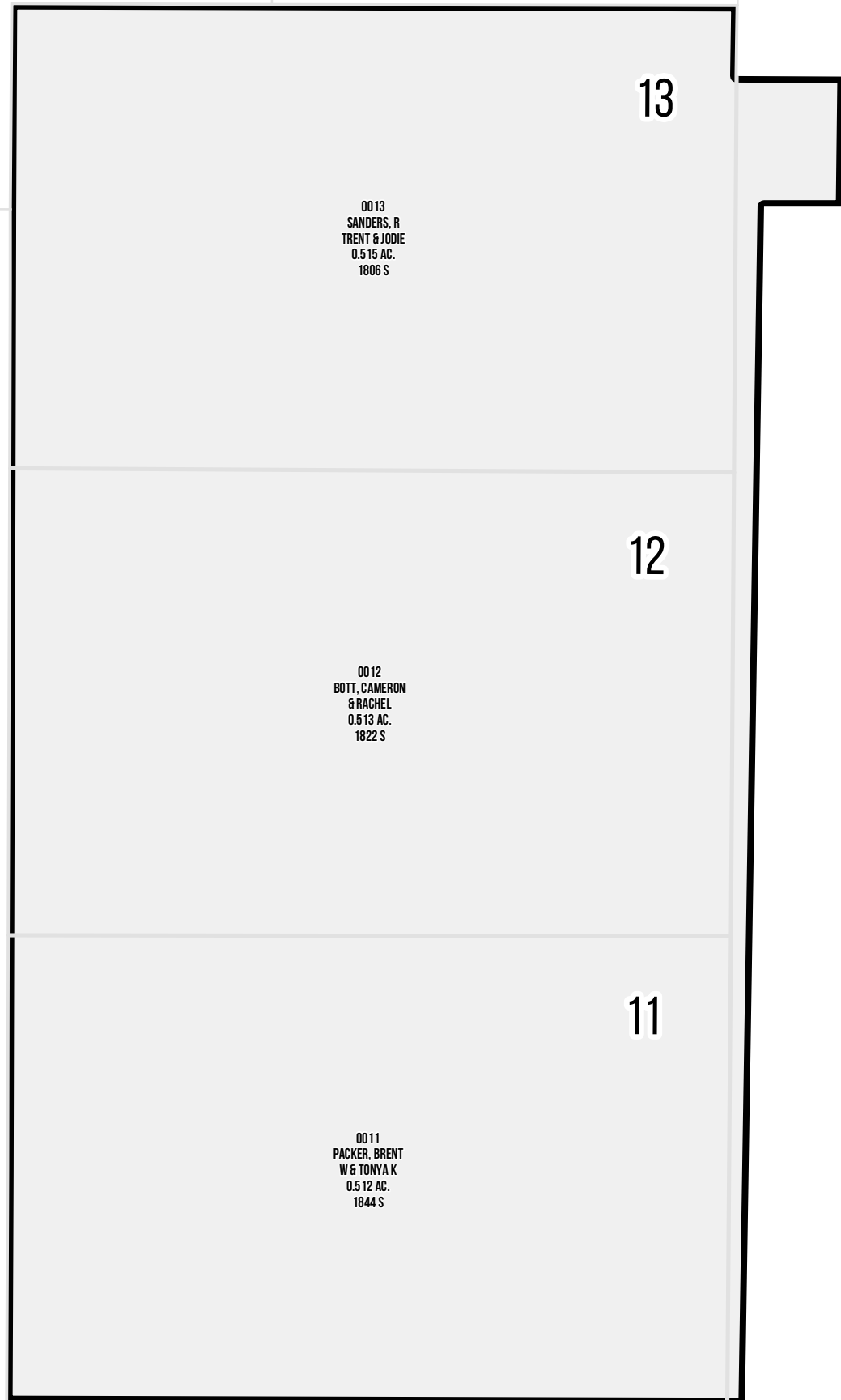
Tax ID Prefix

**08-250**

Plat ID: 3187

Sheet 1 of 1

Year Recorded: 1999

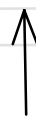


13

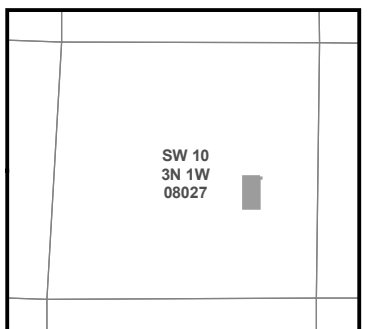
12

11

200 West



1 inch = 40 feet



S L B & M

NOTE: Distance, bearings and radius values are approximate. User needs to refer to the recorded legal descriptions for exact bearing and distances. For cadastral or technical information, see the dedicated plat and or legal descriptions in recorded documents.

Blooming Grove Circle

dge Drive

