

FARMINGTON PRESERVE NORTHWEST SUBDIVISION

LOCATED IN THE NORTHWEST QUARTER OF SECTION 13,
TOWNSHIP 3 NORTH, RANGE 1 WEST, SALT LAKE BASE AND MERIDIAN
DAVIS COUNTY, UTAH

PREFIX
08-236
LAST #
0003

N

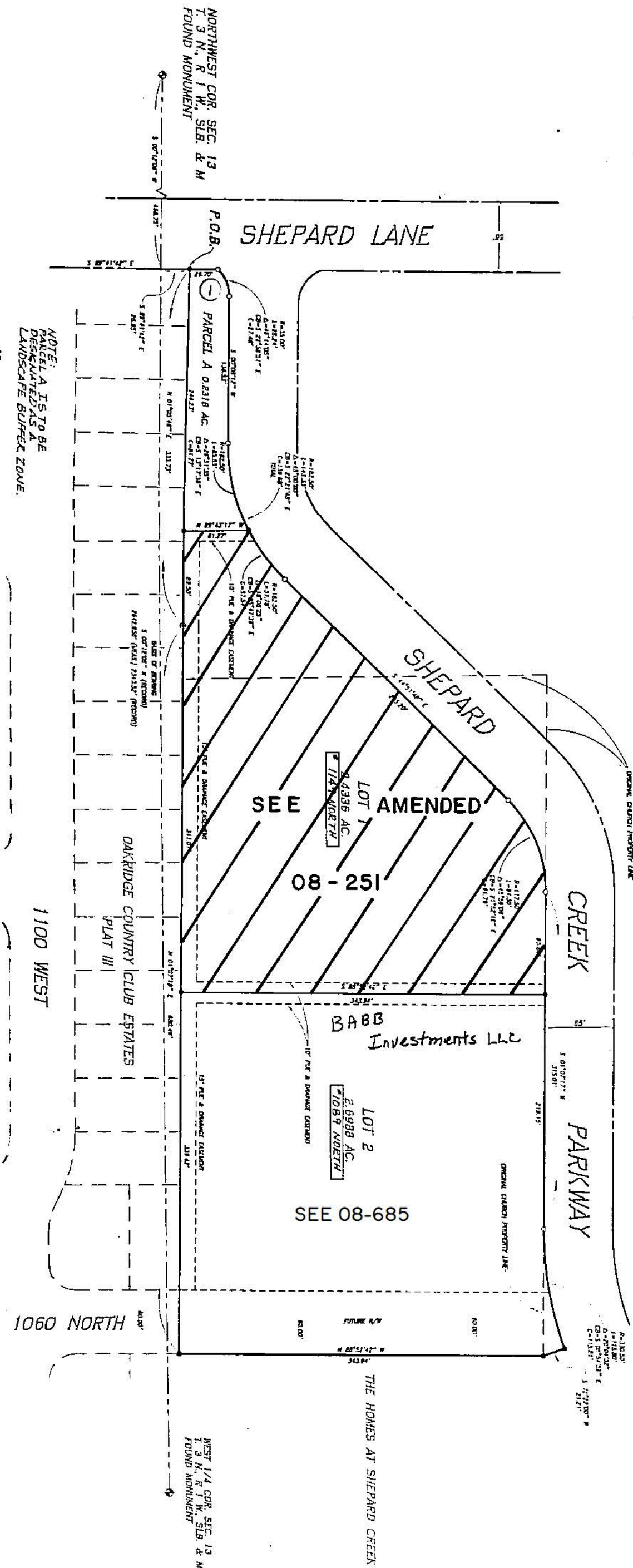
SCALE:
1" = 100'

SUBDIVISION: FARMINGTON PRESERVE NORTHWEST SUBDIVISION

CITY: DAVIS COUNTY LOTS: 1, 2 & PARCEL A

NW 1/4 SEC. 13 T.3N R.1W
SALT LAKE MERIDIAN
DAVIS COUNTY, UTAH

R 11*12*98

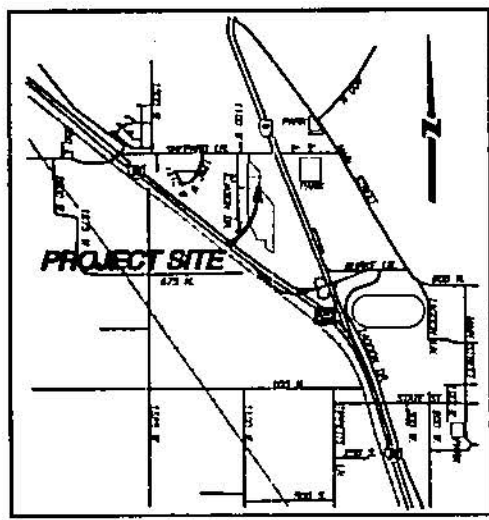


① Farmington Preserve Northwest Association - Plat - 0003

NOTE:
PARCEL A IS TO BE
RECONSTRUCTED AS A
LANDSCAPE BUFFER ZONE.

LEGEND

- ⊕ COUNTY MONUMENT
- 5/8" REBAR AND CAP SET (LABELED LS 358275)
- CALCULATED POINT
- ⊙ FOUND REBAR



THOMPSON-HYSELL
ENGINEERS, INC.

236

80