

# GABE'S ACRES, PHASE 3

A PART OF THE SOUTHWEST QUARTER OF SECTION 10,  
TOWNSHIP 3 NORTH, RANGE 1 WEST, S.L.B. 8 M.  
KAYSVILLE CITY, DAVIS COUNTY, UTAH  
26 DECEMBER 1997

PREFIX  
08-230

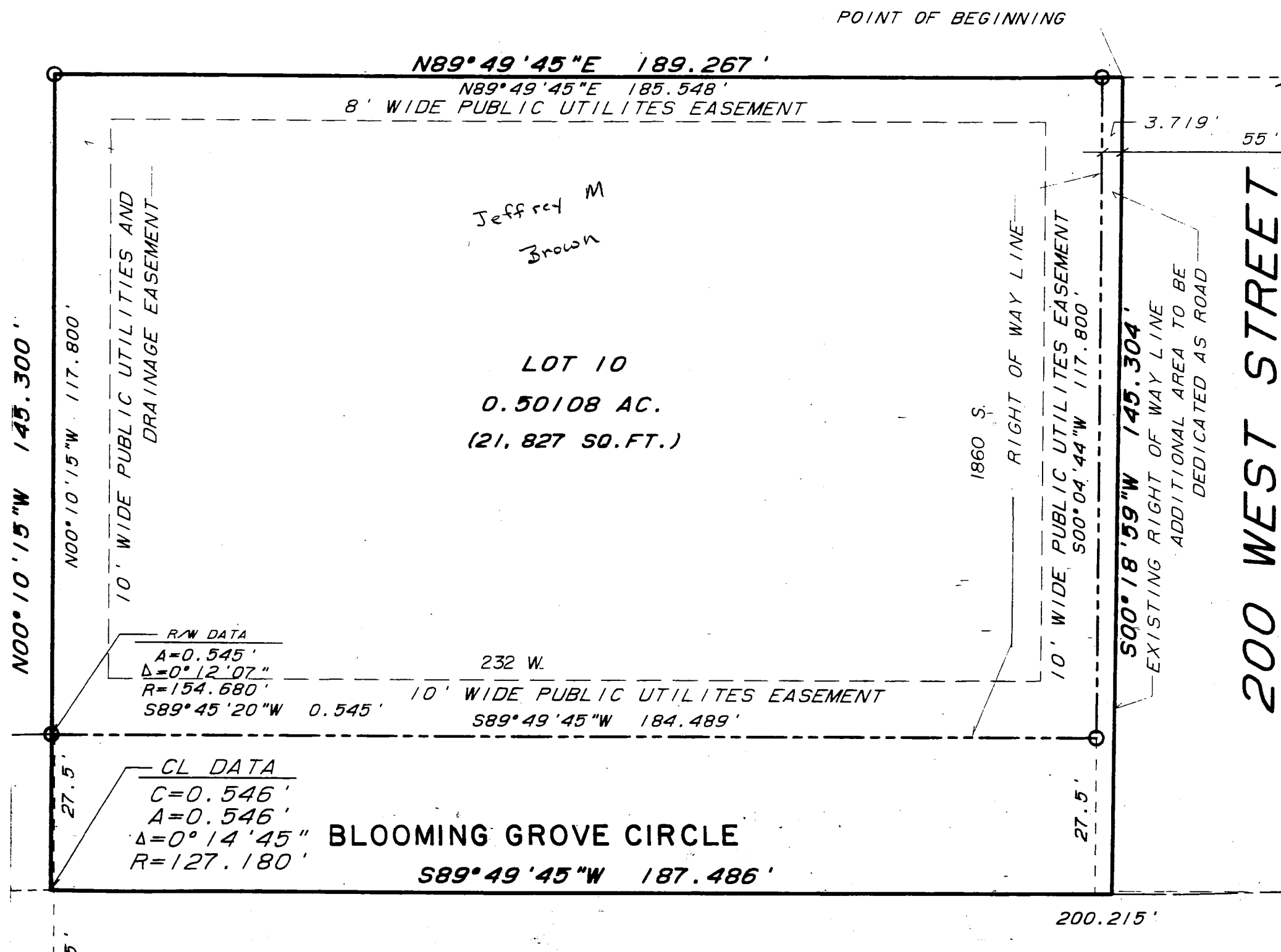
LAST #

N

SCALE:  
1" = 20'

230

08



SUBDIVISION: GABE'S ACRES PHASE 3

CITY: KAYSVILLE LOT: 10

## NOTES AND LEGEND

1. THE BASIS OF BEARING OF THIS SUBDIVISION IS THE LINE FROM THE CENTER OF SECTION 10, T.3 N., R.1 W., S.L.B. 8 M. TO THE TRIANGULATION STATION RADAR: NORTH 72°41'49"EAST, AS ESTABLISHED BY THE DAVIS COUNTY SURVEYOR, AND NOTED ON HIS TIE SHEET DATED 5-4-89.
2. ... INDICATES A FOUND BRASS CAP MONUMENT IN CONCRETE, SET BY THE DAVIS COUNTY SURVEYOR'S OFFICE.
3. ... INDICATES A NUMBER 5 REBAR AND PLASTIC CAP TO BE SET FOR LOT CORNER MARKER.
4. THE 3' STRIP OF PROPERTY ALONG THE EAST SIDE OF LOT 1 IS INTENDED TO ALLOW A DISTANCE OF 10' BETWEEN THE WEST EDGE OF EXISTING CONCRETE CURB AND THE RIGHT OF WAY LINE PROPOSED ON THIS PLAT.
5. (R) ... INDICATES A PUBLIC AGENCY RECORD MEASUREMENT.  
(M) ... INDICATES A MEASUREMENT OF THIS SURVEY.

PREPARED BY:

RICHARDSON SURVEYING, INC.  
3448 SOUTH 100 WEST  
BOUNTIFUL, UTAH 84010  
(801) 298-1615

FILE No. 352PHAS3.2D, GA352.\*

SW 1/4 SECTION 10 T3N R1W  
SALT LAKE MERIDIAN  
DAVIS COUNTY UTAH

R 10\*14\*97