

SHEPARD CREEK VILLAGE A CONDOMINIUM

FARMINGTON

Tax ID Prefix

08-226

Plat ID: 2917

Sheet 1 of 1

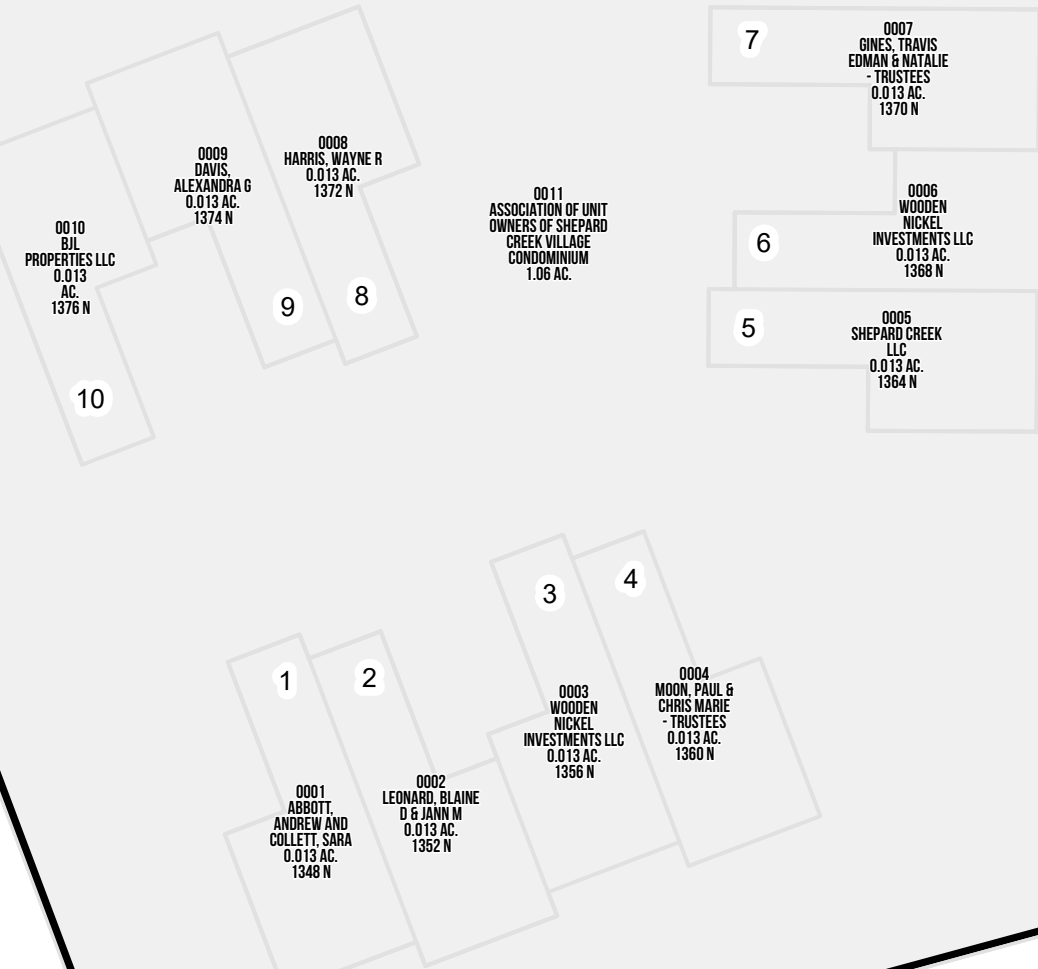
Year Recorded: 1997

COMMON AREA

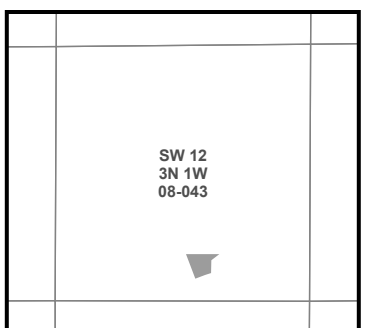
Foxglove Road 830 W

Lupine Way 1325 N

Lupine Court



1 inch = 30 feet



SW 12
3N 1W
08-043

SLB & M

NOTE: Distance, bearings and radius values are approximate. User needs to refer to the recorded legal descriptions for exact bearing and distances. For cadastral or technical information, see the dedicated plat and or legal descriptions in recorded documents.

