

South Bench Estates No. 8

A part of the Northeast 1/4 of Section 11,
T3N, R1W, SLB&M, U.S. Survey
Kaysville City, Davis County, Utah

PREFIX 3
08-224

LAST #
0181



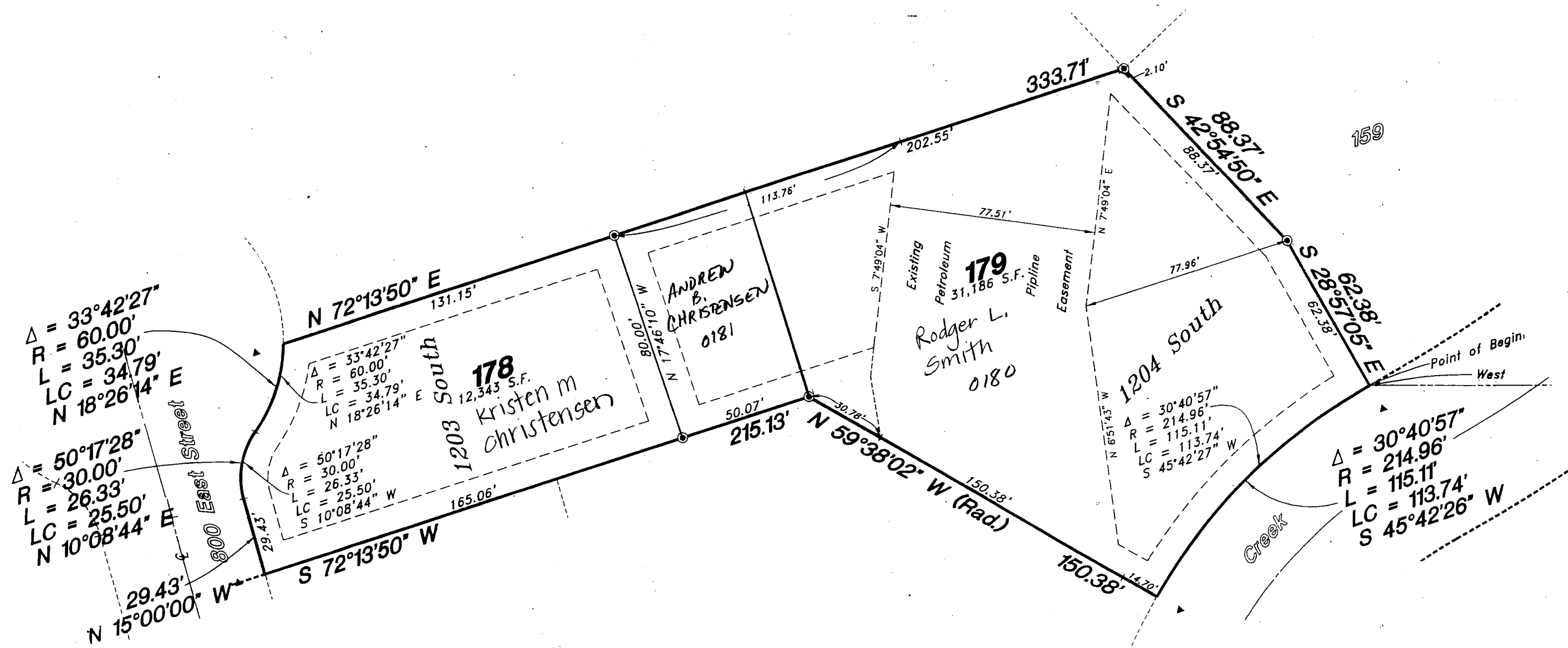
SCALE:
1" = 40'

SUBDIVISION: SOUTH BENCH ESTATES NO.8

CITY: KAYSVILLE LOTS: 178-179

NE 1/4 SECTION 11 T3N R1W
SALT LAKE MERIDIAN
DAVIS COUNTY UTAH

R 10*17*97



NOTE: Easements for Utility and Drainage are 10 ft. wide on front and back and 8 ft. wide on each side of lot lines as indicated by dashed lines, unless otherwise indicated.

Legend

- ▲ Set Nail in Curb
- ⊙ Set Rebar & Cap w/Fencepost

GREAT BASIN ENGINEERING, INC.

CONSULTING ENGINEERS AND SURVEYORS
3544 Lincoln Avenue, Ogden, Utah, 84401
P.O. Box 9307, Ogden, Utah

Salt Lake City (801)521-0222 Ogden (801)394-4515 Fax (801)392-7544

224

08