

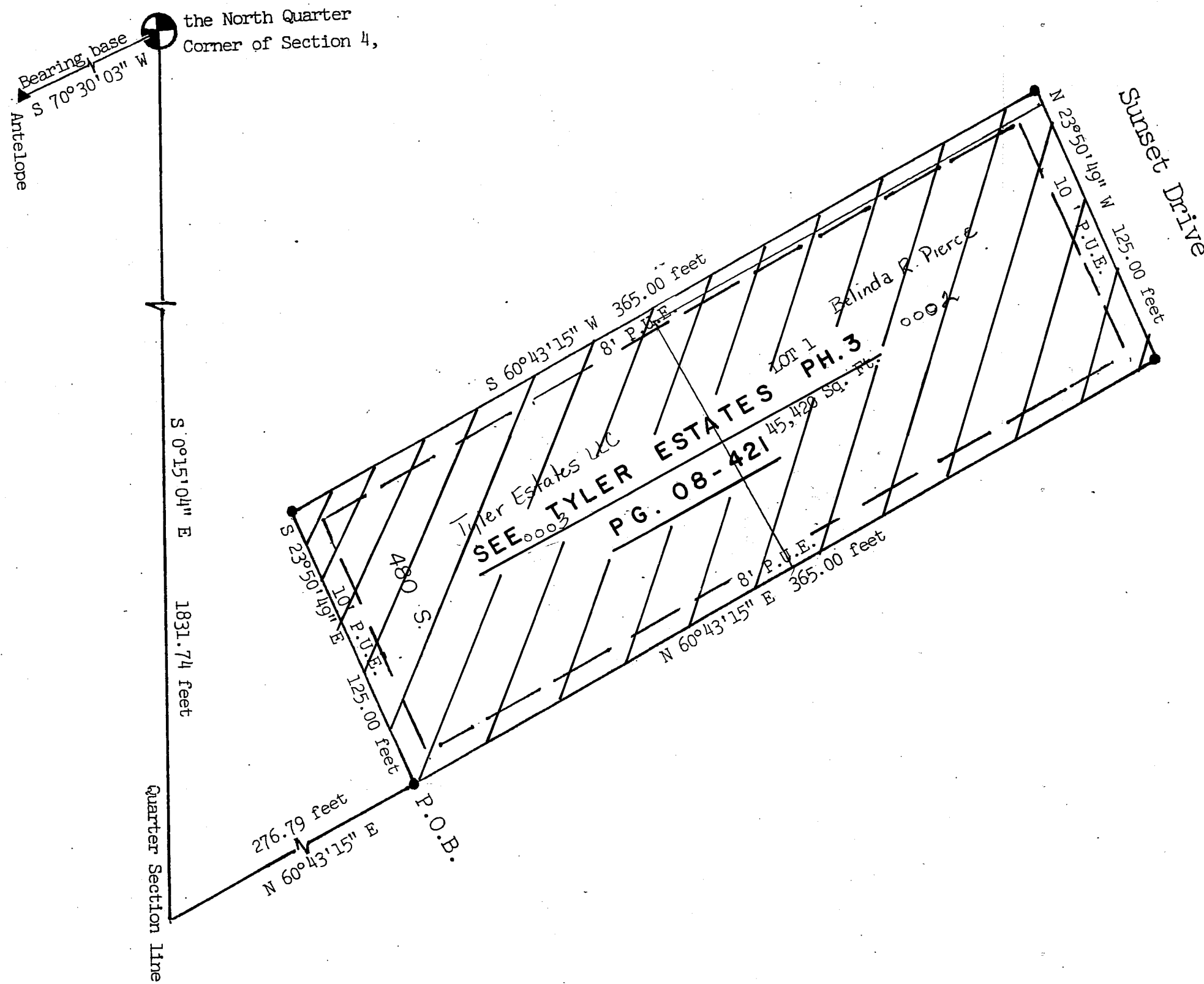
PIERCE SUBDIVISION

A PART OF THE NORTHEAST QUARTER OF SECTION 4, TOWNSHIP 3 NORTH, RANGE 1 WEST,  
SALT LAKE BASE AND MERIDIAN, IN KAYSVILLE CITY, DAVIS COUNTY, UTAH.

PREFIX  
08-220  
LAST # 1  
0003



SCALE:  
1" = 50'



SUBDIVISION: PIERCE  
CITY: KAYSVILLE LOTS: 1

NE 1/4 SECTION 4 T3N R1W  
SALT LAKE MERIDIAN  
DAVIS COUNTY UTAH

Max B. Elliott a Registered Land Surveyor

March 1, 1997  
Max B. Elliott