

JOHN MITCHELL ESTATES NO. 1
A PART OF THE NORTHEAST 1/4 OF SECTION 15,
T. 3N., R.1W., SALT LAKE BASE AND MERIDIAN

PREFIX 18
 08-215

LAST #
 0002



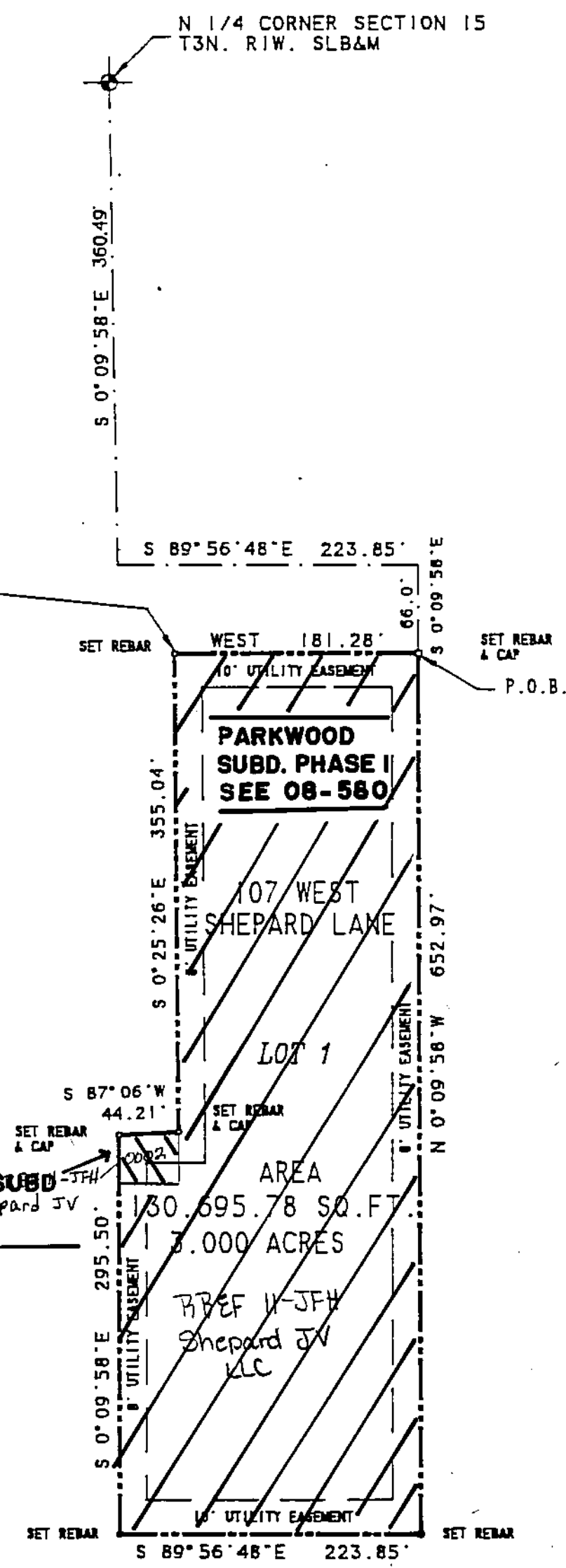
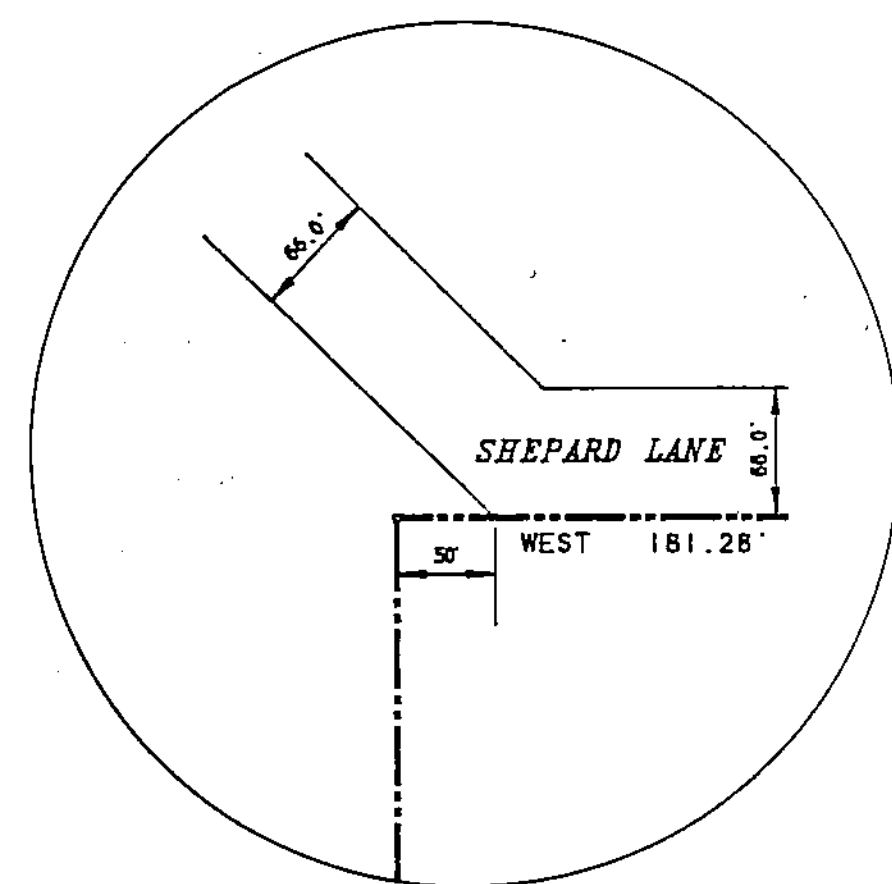
SCALE:
 1" = 100'

SUBDIVISION: JOHN MITCHELL EST. NO. 1

CITY: KAYSVILLE LOTS: 1

NE 1/4 SECTION 15 T3N R1W
 SALT LAKE MERIDIAN
 DAVIS COUNTY UTAH

R 2*18*97



LEGEND

- 1/4 SECTION CORNER
- SET REBAR & CAP

STRINGHAM & ASSOCIATES

215

08