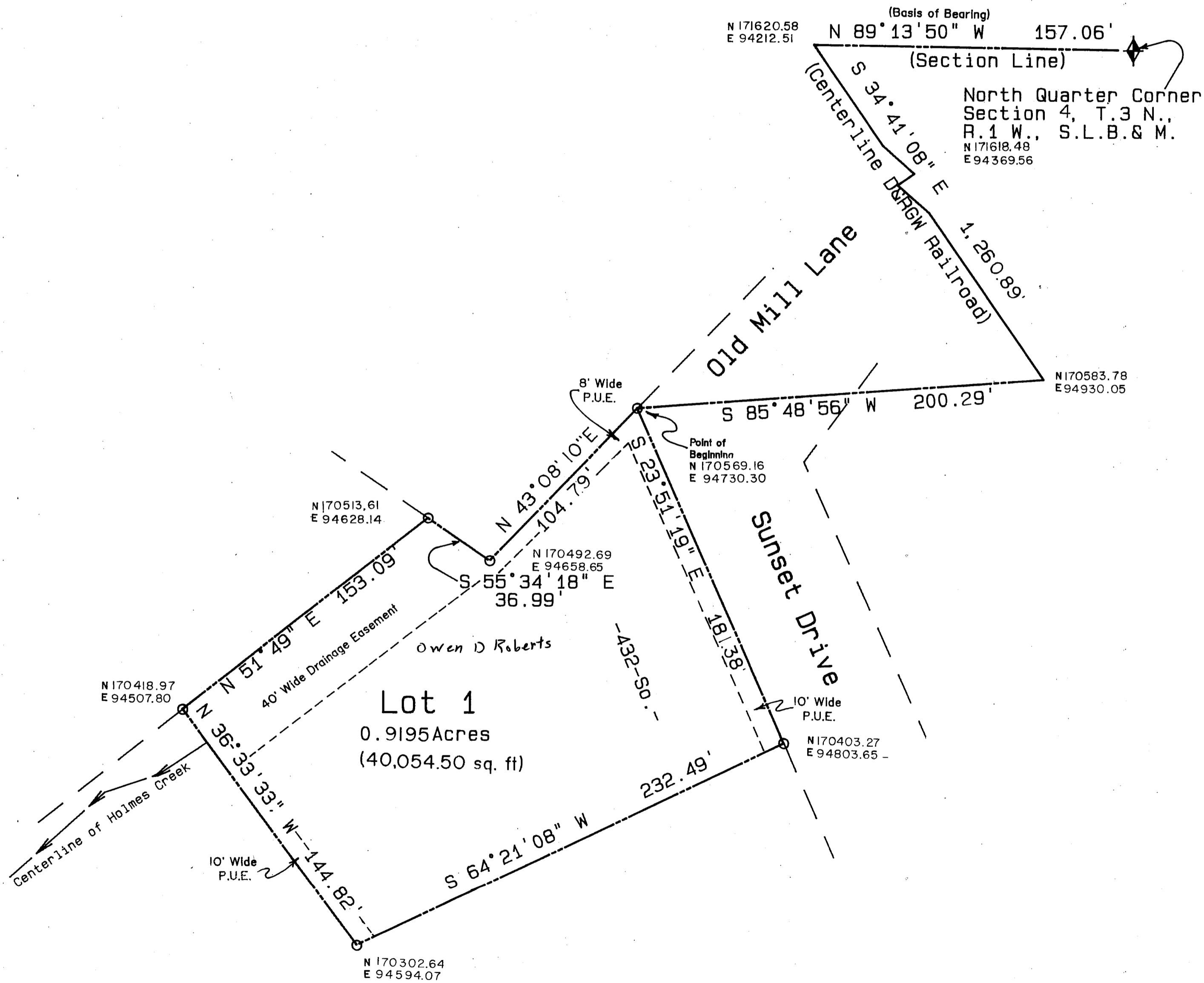


# Terry's Place Subdivision

Being A Part Of The Northeast Quarter  
Of Section 4, T.3 N., R.1 W., S.L.B.& M.  
Kaysville City, Davis County, Utah



PREFIX  
08-211  
LAST#

NORTH  
SCALE  
1" = 40'

SUBDIVISION TERRY'S PLACE  
CITY KAYSVILLE LOTS 1 TO 1  
DAVIS COUNTY GEO-GRAPHIC INFORMATION DIVISION

NE 1/4 SECTION 4 T3N R1W  
Salt Lake Meridian  
Davis County, Utah  
R-11-20-96

**BE** Balling  
Engineering