

MADSEN MEADOWS SUBDIVISION
 LOCATED IN THE S.W. 1/4 SEC. 10, T3N R1W SLB&M
 KAYSVILLE CITY, UTAH

PREFIX
 08-210

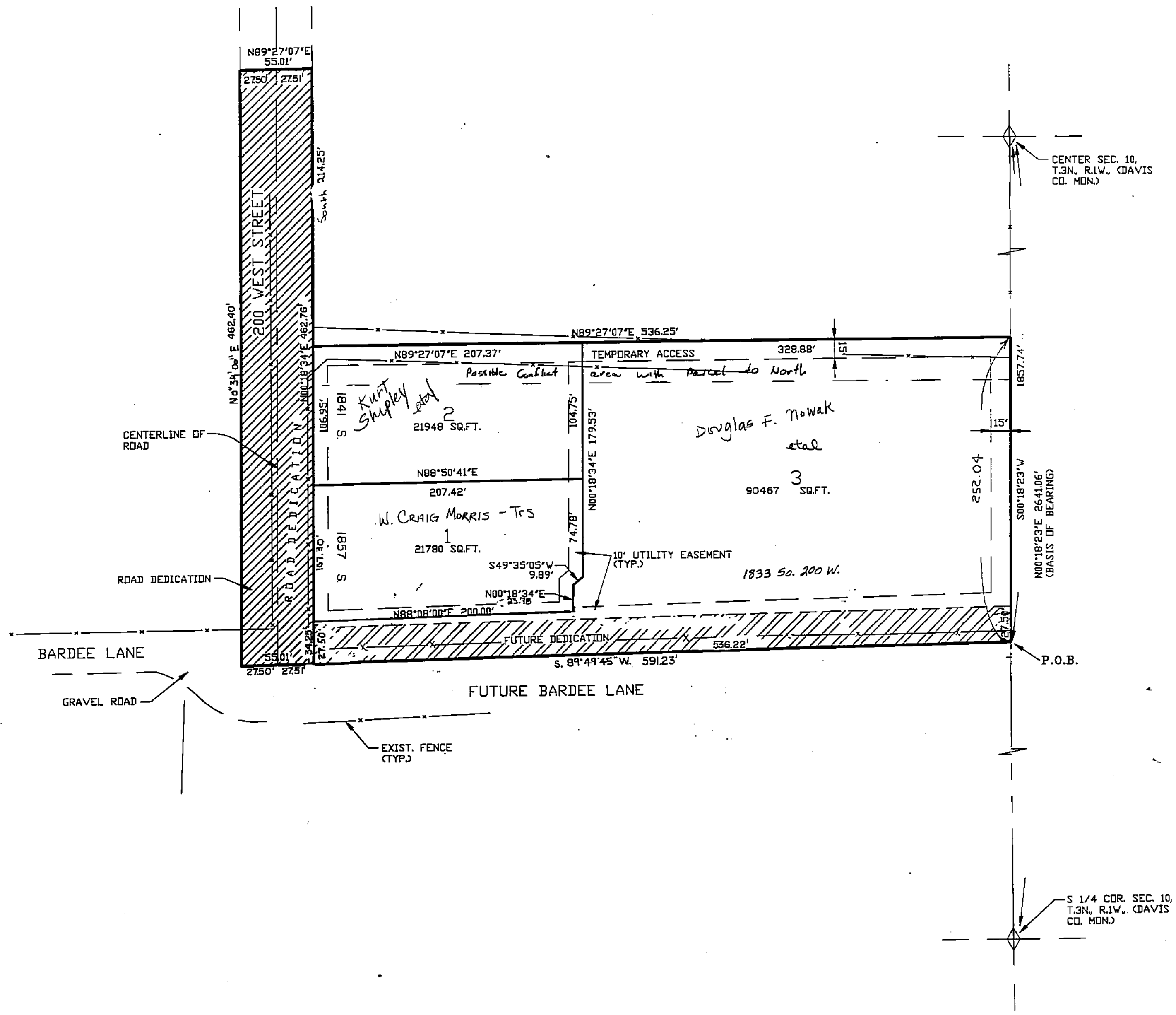
LAST #



SCALE:
 1" = 60'

SUBDIVISION: MADSEN MEADOWS
 CITY: KAYSVILLE LOTS: 1 TO 3

SW SECTION 10 T 3N R 1W
 SALT LAKE MERIDIAN
 DAVIS COUNTY UTAH



LANDMARK SURVEYING
 2485 GRANT AVE. OGDEN, UTAH 84401 827-4014

R 9-26-96

210

08