

OLD SHEPARD COMMONS

FARMINGTON

Tax ID Prefix

08-209

Plat ID: 2688

Sheet 1 of 1

Year Recorded: 1996

VILLAGE AT OLD FARM PUD - PHASE 3, THE
08-463
4976

VILLAGE AT OLD FARM PUD - PHASE 3, THE
08-463
4976

OLD SHEPARD CREEK SUBDIVISION
08-183
2434

0024
MCKS LIMITED
LIABILITY
COMPANY
1.095 AC
1466 N

0008
CAVALLO,
CESAR ADRIAN
0.23 AC
1474 N

0009
POLA SEN,
FRANKLIN SETH
A. TRUSTEE
0.274 AC
1468 N

0007
BAKER, JOLISA
MANDI GATTON,
CE. TRUSTEE
0.23 AC
1464 N

0006
NEIL, LINDSEY J.
& CARLIE
THOMPSON
0.23 AC
1454 N

0011
LARSON, ROBIN
W. & JULIE R.
0.222 AC
1448 N

0005
GUILLAUME,
ZACHARIE & LAURA
0.23 AC
1444 N

0022
GALLOWAY, DAROLD
EDWIN & BONNIE L.
0.262 AC
1437 N

0004
PATTERSON, JOCI
T. TRUSTEE
0.23 AC
1432 N

0003
SEWARD, JOSEPHINE
A. TRUSTEE
0.23 AC
1422 N

0018
SMITH, JOSHAUA
DUANE & SARAH
0.24 AC
1417 N

0017
MCKS LIMITED
LIABILITY
COMPANY
1.1 AC
1438 N

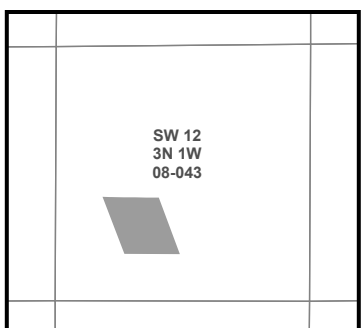
0015
MCKS LIMITED
LIABILITY
COMPANY
0.31 AC



Parcel ID

Lot Number

1 inch = 60 feet



SLB & M

NOTE: Distance, bearings and radius values are approximate. User needs to refer to the recorded legal descriptions for exact bearing and distances. For cadastral or technical information, see the dedicated plat and/or legal descriptions in recorded documents.



Last update: 9/1/2023

08-263
3279

SB Highway 89
Highway 89 US 89 NB Highway 89

N Highway 89

Old Shepard Road
W. 000 West Shepard Rd

900 West Old Shepard Rd

Creek Lane 1415 N

Fogsgrove Road
Fogsgrove Road 500 W

Dandelion Circle 1440 N