

BEYNON SUBDIVISION

A PART OF THE SOUTHWEST QUARTER OF
SECTION 24, TOWNSHIP 3 NORTH, RANGE 1. WEST,
SALT LAKE BASE AND MERIDIAN
IN FARMINGTON CITY, UTAH
DAVIS COUNTY

PREFIX

08-195
LAST#

NORTH



SCALE
1" = 40'

LOTS 1 TO 2

SUBDIVISION BEYNON

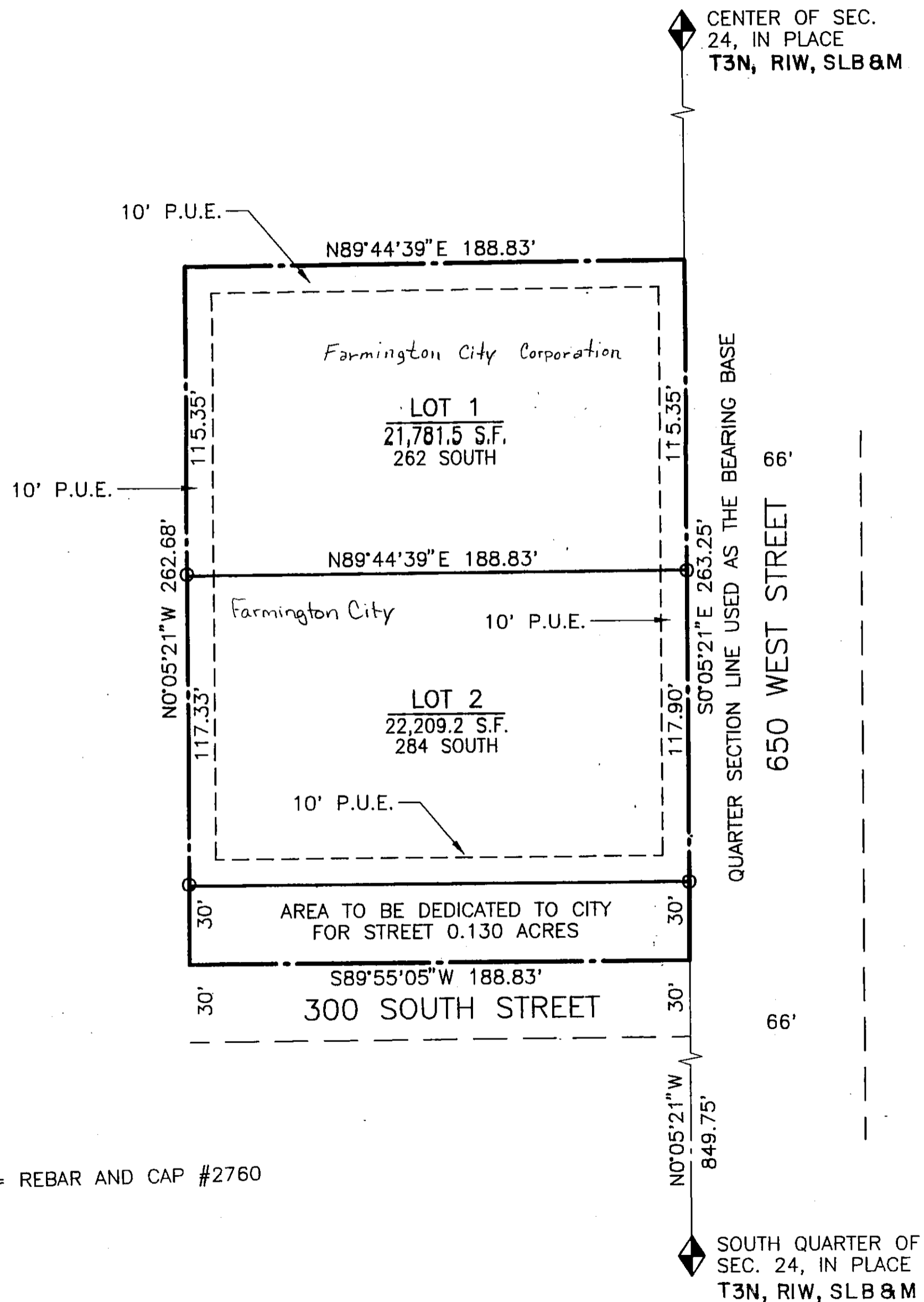
CITY FARMINGTON

DAVIS COUNTY GEO-GRAPHIC INFORMATION DIVISION

SW1/4 SECTION 24 T3N R1W

Salt Lake Meridian
Davis County, Utah

R 1-24-96



195

08