

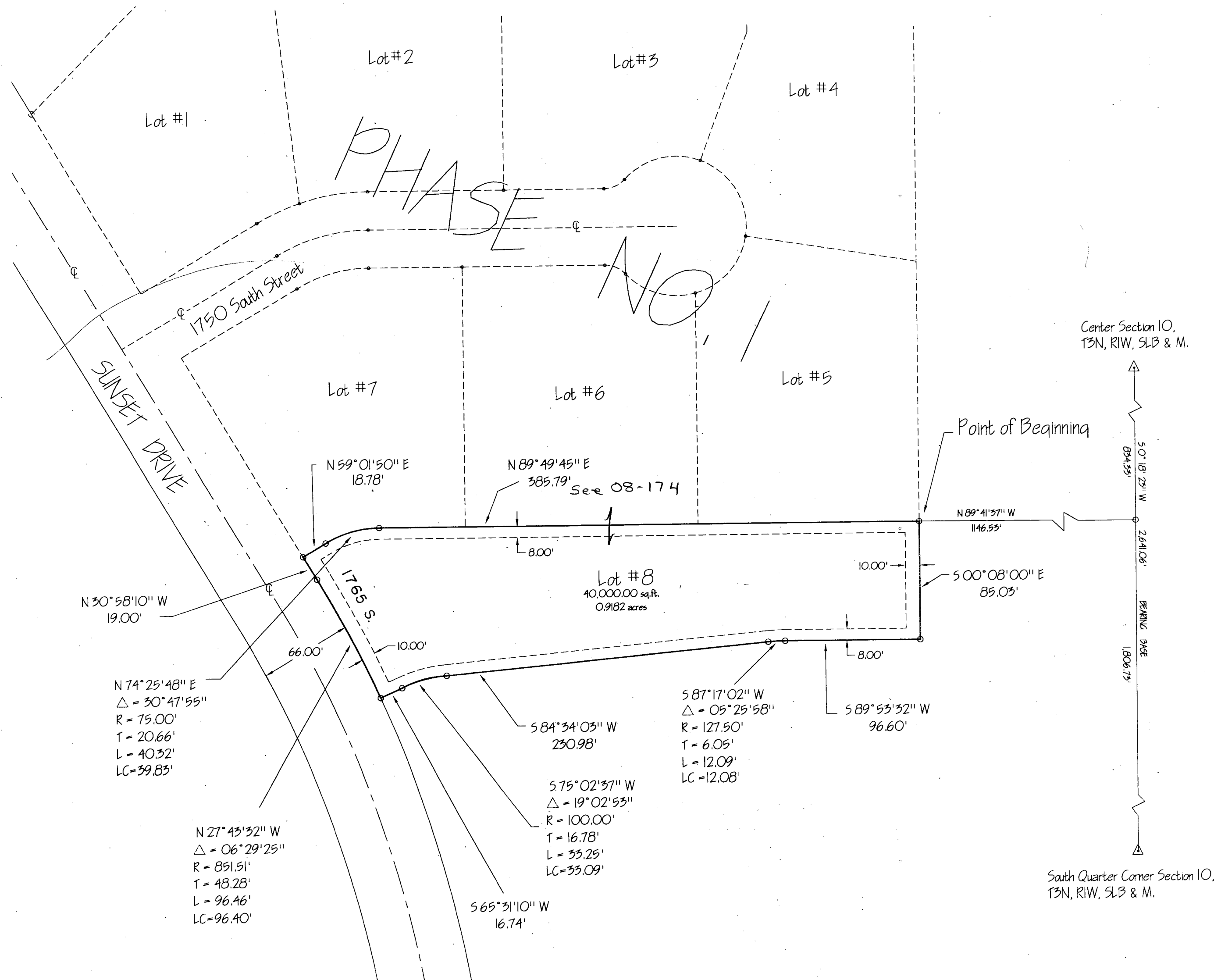
SUNSET ESTATES SUBDIVISION PHASE 2

A Part of the Southwest Quarter of Section 10, T3N, R1W, SLB&M,
Kaysville City, Davis County, Utah

FILED 8
08-178
LAST #
0008
NORTH
SCALE
1" = 60'

SUBDIVISION **SUNSET ESTATES SUBD. PHASE 2**
CITY **KAYSVILLE** LOTS **8** TO **-**
DAVIS COUNTY GEOGRAPHIC INFORMATION DIVISION

SW **SECTION 10 T3N R1W**
Salt Lake Meridian
Davis County, Utah
R11-17-94



NOTES:
1. A 8.0 foot utility easement each side of property lines unless otherwise noted, easement indicated by the dashed lines. All easements to be used for irrigation, water lines, storm drainage, sanitary sewer, electrical power, communication lines and other public utilities. A 10.0 foot utility easement along the front and rear of each lot unless otherwise noted.